

Houston First Corporation - Client
701 Avenida de las Americas, Ste. 200, Houston, TX 77001

Rios Clementi Hale Studios (RCHS)
Lead Landscape Architect & Lead Design Architect
3101 Exposition Place, Los Angeles, CA 90018

Asakura Robinson (AR) - Landscape Architecture & Irrigation
1925 Westwood Avenue, Ste. A Houston, TX 77057

B&C Engineering (E&C) - MEP Engineering
1035 Lamar, Suite 600, Houston, TX 77002

Fluidity Design (FD) - Water Feature Design
2750 Wilshire Blvd., Suite 200, Los Angeles, CA 90010

Gradient Group (GG) - Civil Engineering
2500 Clay West Blvd., Suite 100, Houston, TX 77042

Harrison Koenigberg (HK) - Executive Architect
3800 Buffalo Speedway, Ste. 550, Houston, TX 77008

Henderson Rogers (HR) - Structural Engineering
2653 Augusta Dr., Suite 800, Houston, TX 77057

Jaffe Holden (JH) - Audio/Visual Consulting
1111 North Loop West Freeway, Ste. 520, Houston, TX 77009

Jordan Consultants LLC (JC) - Specifications
442 Heights Blvd., Houston, TX 77001

Project Cost Resources (PCR) - Cost Estimating
20019 US, Richmond, TX 77406

Scholar Shook (SS) - Lighting & Theater Design
325 North Loop West, Suite 520, Houston, TX 77001

Traffic Engineering Inc (TEI) - Streetscape & Mobility
801 Congress Ave. Ste. 100, Houston, TX 77002

Walker P Moore (WPM) - Hardscaping
1301 McKinney, Suite 1100, Houston, TX 77001

CONSULTANTS

NOTES

REVISION

LYNN WYATT SQUARE FOR THE PERFORMING ARTS
600 Louisiana St,
Houston, TX 77002

REVISION

08/14/20 ISSUED FOR BID

REVISION

08/14/2020

REVISION

As indicated

REVISION

LIGHTING SCHEDULES AND DETAILS

08/14/2020

LD0.00

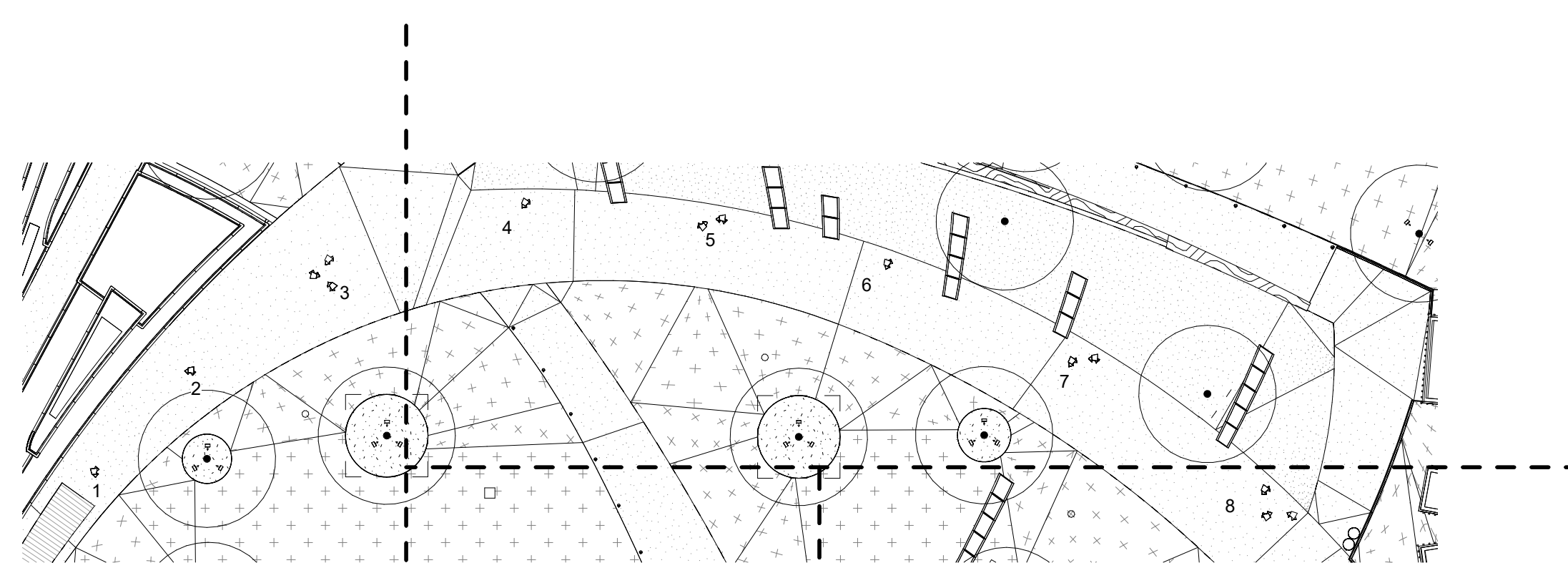
REVISION

DMX RELAY PANEL

RELAY #	DMX ADDRESS	Load Description & Location	Feed Branch Circuit Breaker	RELAY Rating (Watt)	Load / Circuit (Watt)	CONTROL DMX - 0-10V
1		TYPE SA STAIRS	20A	2400	100	X
2		TYPE SB SOUTHEAST TREES	20A	2400	1260	X
3		TYPE SB CENTRAL WEST TREES	20A	2400	840	X
4		TYPE SE1 CENTRAL PATH TURTLES	20A	2400	200	X
5		TYPE SB CENTRAL EAST TREES	20A	2400	525	X
6		TYPE SB NORTHEAST TREES	20A	2400	420	X
7			20A	2400		
8		TYPE SE NORTHEAST RAMP TURTLES	20A	2400	150	X
9			20A	2400		
10		TYPE SD PATH BY RESTAURANT	20A	2400	322	X
11		TYPE SF RESTAURANT BENCHES	20A	2400	270	X
12		TYPE SA SOUTHWEST RAMP	20A	2400	100	X
13		TYPE SB NORTHWEST TREES	20A	2400	315	X
14		TYPE SE WATER FEATURE RAMPS	20A	2400	50	X
15		TYPE SA RESTAURANT RAMP	20A	2400	100	X
16		TYPE SC1 MAIN WALK POLES	20A	2400	840	X
17		TYPE SC1 MAIN WALK POLES	20A	2400	840	X
18		TYPE SA NORTH RAIL LIGHTS	20A	2400	150	X
19		TYPE SD1 SOUTHEAST POLES	20A	2400	184	X
20		SOUTHEAST DUPLEX	20A	2400	1800	
21			20A	2400		
22			20A	2400		
23		CENTRAL EAST DUPLEX	20A	2400	1600	
24		CENTRAL WEST DUPLEX	20A	2400	1600	
25			20A	2400		
26			20A	2400		
27		TYPE SA RESTAURANT REAR ENTRY	20A	2400	50	X
28			20A	2400		
29		TYPE SF NORTHEAST BENCHES	20A	2400	270	X
30		TYPE SF RESTAURANT BENCHES	20A	2400	360	X
31		SIGNAGE	20A	2400		
32		SIGNAGE	20A	2400		
33			20A	2400		
34			20A	2400		
35			20A	2400		
36			20A	2400		
37			20A	2400		
38			20A	2400		
39			20A	2400		
40			20A	2400		
41			20A	2400		
42			20A	2400		
43			20A	2400		
44			20A	2400		
45			20A	2400		
46			20A	2400		
47			20A	2400		
48			20A	2400		

2 RELAY PANEL SCHEDULE
NO SCALE

GROUP #	POLE HEIGHT	FIXTURE TYPE SC1	WAP MT 10'-12'	ANEMOMETER MT 10'-12'	CAMERA MT 10'-12'
1	28'	4	1	1	
2	28'	4			1
3	28'	4			
	30'	4			
	35'	4	1		
4	28'	4			1
5	28'	4			
	35'	4	1		
6	28'	4			1
7	28'	4			
	35'	4	1		
8	28'	4			
	30'	4	1		
	35'	4			



4 LIGHT POLE COORDINATION DIAGRAM
SCALE: 1" = 20'-0"

TYPE	FIXTURE DESCRIPTION	MOUNTING	MANUFACTURER	CATALOG NUMBER	LAMP(S)	WATTS	VOLT	LOCATION / REMARKS
SA	LED PUCK LIGHT FOR MOUNTING IN RAILINGS WITH 3000K COLOR TEMPERATURE, ASYMMETRIC DISTRIBUTION, AND STAINLESS STEEL HOUSING	RECESSED RAILING	ALPHABET	ZETA 750 7505 30K VA BG ...	LED INTEGRAL	1.5	PER E.E.	HANDRAILS PROVIDE 0-10V DIMMING SOLO REMOTE DRIVERS AS REQUIRED. PROVIDE INGRADE DRIVER ENCLOSURES AS REQUIRED.
SA1	LED PUCK LIGHT FOR MOUNTING IN RAILINGS WITH 3000K COLOR TEMPERATURE, WIDE SYMMETRIC DISTRIBUTION, AND STAINLESS STEEL HOUSING	RECESSED RAILING	ALPHABET	ZETA 750 7505 30K WD BG ...	LED INTEGRAL	1.5	PER E.E.	HANDRAILS PROVIDE 0-10V DIMMING SOLO REMOTE DRIVERS AS REQUIRED. PROVIDE INGRADE DRIVER ENCLOSURES AS REQUIRED.
SB	LED FLOODLIGHT FOR ILLUMINATING TREES WITH 3000K COLOR TEMPERATURE, ALUMINUM HOUSING, DAXUDOM INTEGRAL DIMMING DRIVER, 40 DEGREE SPREAD LENS, AND FULL SHOOT	SURFACE GRADE	ACCLAIM LIGHTING	DAS-2, 1-AACN DASSL40 DAFS...	LED INTEGRAL	35	PER E.E.	THREE UPLIGHT COLOR PER ARCHITECT
SC	POLE FOR MOUNTING MULTIPLE LUMINAIRES. HEIGHTS RANGE FROM 28 TO 35 FEET. POLES SHALL INTEGRATE BOTH POWER AND DATA. CUSTOM COLOR TBD.	SURFACE GRADE	TECHNOLUM	TZ SERIES 28'-VTMPP1800X04 30'-VTMPP1900X04 35'-VTMPP1000X04			PER E.E.	MAIN WALKWAY BRING POWER, DATA, AND VIDEO TO EACH POLE
SC1	LED POLE MOUNTED FLOODLIGHT WITH 3000K COLOR TEMPERATURE, ALUMINUM HOUSING, YOKE MOUNT, DMX DIMMING DRIVER, AND WIDE BEAM PHOTOMETRIC DISTRIBUTION. CUSTOM COLOR TBD.	SURFACE POLE	WE-EF	667-7426 667-9219 GLARE SHIELD 667-8209 LOUVER	LED INTEGRAL	30	PER E.E.	MAIN WALKWAY PROVIDE FOUR PER POLE. PROVIDE WITH GLARE SHIELD AND HONEYCOMB LOUVER
SD	LED POLE MOUNTED AREA LIGHT WITH 3000K COLOR TEMPERATURE, ALUMINUM HOUSING, 0-10V DIMMING DRIVER, AND WIDE PHOTOMETRIC DISTRIBUTION. PROVIDE WITH 18 FOOT POLE.	SURFACE POLE	SELUX	DLM.F80 T1 L48 30 ... VOLT DM	LED INTEGRAL	46	PER E.E.	WALKWAY TO RESTAURANT
SD1	LED POLE MOUNTED AREA LIGHT WITH 3000K COLOR TEMPERATURE, ALUMINUM HOUSING, 0-10V DIMMING DRIVER, AND WIDE PHOTOMETRIC DISTRIBUTION. 25 FOOT POLES WITH TWO HEADS PER POLE.	SURFACE POLE	SELUX	DLM.F80 T1 L48 30 ... VOLT DM	LED INTEGRAL	46	PER E.E.	WALKWAY TO RESTAURANT BY STAGE
SE	SEMI-RECESSED LED PATHWAY GRAZER WITH 3000K COLOR TEMPERATURE, CAST ALUMINUM TOP ENCLOSURE, STAINLESS STEEL HOUSING, AND 180 DEGREE LIGHT DISTRIBUTION.	SEMI-RECESSED WALKWAY	BEGA	88 673	LED INTEGRAL	5	PER E.E.	RAMPS PROVIDE WITH REMOTE DRIVERS AS REQUIRED
SE1	SEMI-RECESSED LED PATHWAY GRAZER WITH 3000K COLOR TEMPERATURE, CAST ALUMINUM TOP ENCLOSURE, STAINLESS STEEL HOUSING, AND 180 DEGREE LIGHT DISTRIBUTION.	SEMI-RECESSED WALKWAY	BEGA	77 089	LED INTEGRAL	8	PER E.E.	INTERMEDIATE WALKWAY
SF	FLEXIBLE LINEAR LED FIXTURE WITH 3000K COLOR TEMPERATURE, ORAL POLYURETHANE ENCAPSULATION, AND 200 LUMENS PER FOOT.	SURFACE CEILING	LED LINEAR	VARIO LED FLEX PHOBOS TC-30-W900-XXX-IP67	LED INTEGRAL	3 W PER FT	PER E.E.	SEATWALLS PROVIDE WITH 0-10V DIMMING REMOTE POWER SUPPLIES AS REQUIRED.
SG	NOT USED						PER E.E.	
SH	NOT USED						PER E.E.	

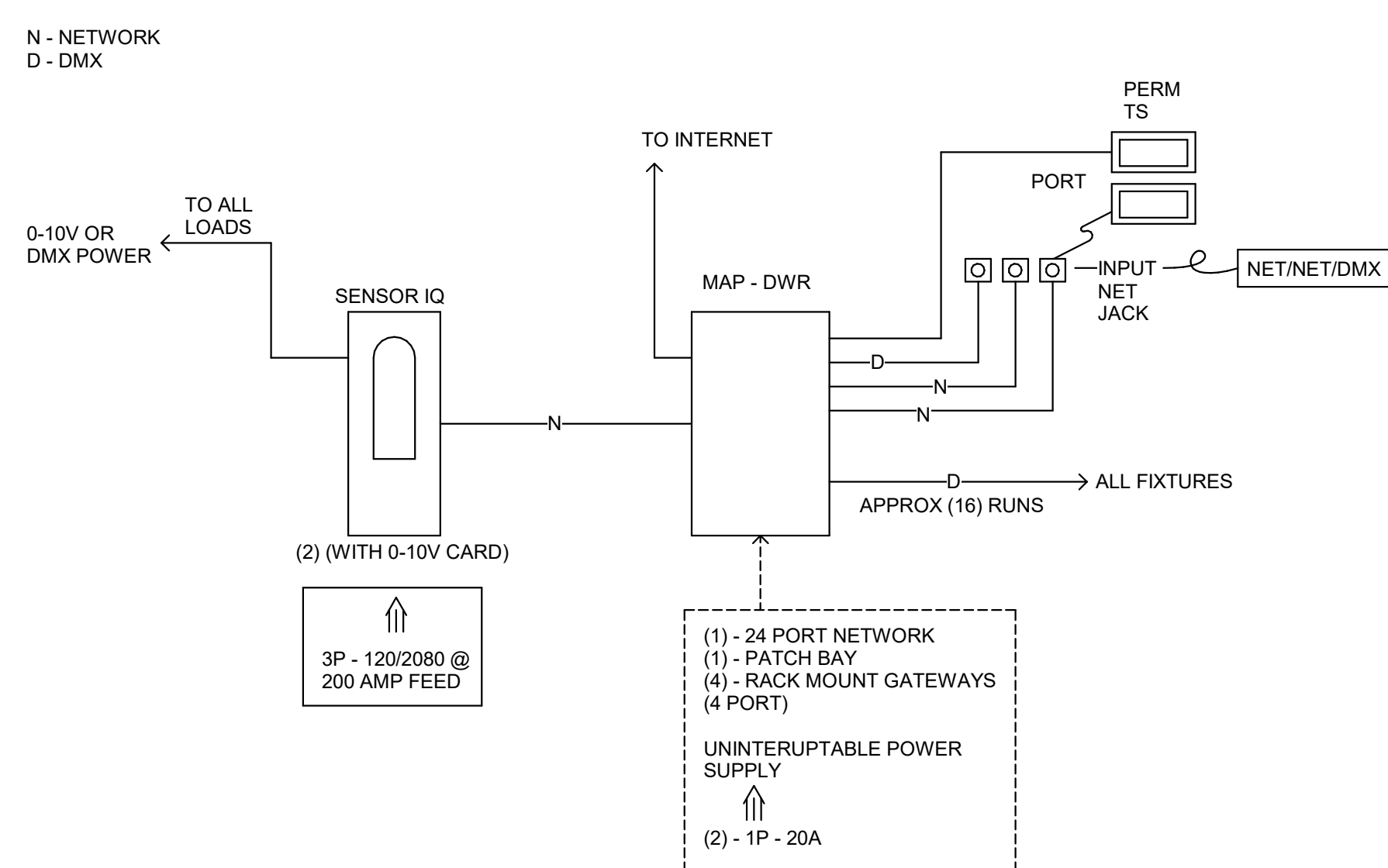
ONLY SUBSTITUTIONS SUBMITTED TO ARCHITECT AND LIGHTING CONSULTANT AT LEAST 10 DAYS PRIOR TO BID DATE WILL BE CONSIDERED.

NOTES:
LIGHTING SHOP DRAWING SUBMITTALS SHALL BE PREPARED BY MANUFACTURERS AND/OR MANUFACTURERS REPRESENTATIVES.
VERIFY CEILING COMPATIBILITY, MOUNTING CONDITIONS, CLEARANCES AND STRUCTURAL SUSPENSION SYSTEM PRIOR TO FIXTURE PROCUREMENT.
ALL CIRCUITS ARE 0-208V, NO COMMON NEUTRALS.
ALL FIXTURE SUBSTITUTIONS MUST BE APPROVED BY ARCHITECT AND LIGHTING CONSULTANT PRIOR TO BID.
XXX DESIGNATES INFORMATION TO BE SUPPLIED BY CONTRACTOR.
REFER TO THE ARCHITECTURAL LIGHTING FIXTURE SPECIFICATION FOR ADDITIONAL INFORMATION.

1 LIGHT FIXTURE SCHEDULE
NO SCALE

REFER TO ELECTRICAL DRAWINGS FOR ADDITIONAL LIGHTING SCOPE IN THE RESTAURANT AND GARAGE.

3 CONTROL RISER DIAGRAM
SCALE: 12" = 1'-0"



Houston First Corporation - Client
701 Avenida de las Americas, Ste. 200, Houston, TX 77010

Rios Clementi Hale Studios (RCHS)
Lead Landscape Architect & Lead Design Architect
3101 Exposition Place, Los Angeles, CA 90018

Asakura Robinson (AR) - Landscape Architecture & Irrigation
1922 Washington Avenue, Suite A, Houston, TX 77002

ERC Engineering (ERC) - MEP Engineering
1015 Lamar, Suite 650, Houston, TX 77002

Fluidity Design (FD) - Water Feature Design
2750 Wilshire Blvd., Suite 230, Los Angeles, CA 90010

Gradient Group (GG) - Civil Engineering
2500 Clay West Blvd., Suite 201, Houston, TX 77042

Hartman Korbberg (HK) - Executive Architect
3800 Buffalo Speedway, Ste. 550, Houston, TX 77008

Henderson Rogers (HR) - Structural Engineering
2653 Augusta Dr., Suite 800, Houston, TX 77057

Jeffie Holden (JH) - Audio/Visual Consulting
1111 North Loop West Freeway, Ste. 520, Houston, TX 77009

Jordan Consultants LLC (JC) - Specifications
422 Heights Blvd., Houston, TX 77001

Project Cost Resources (PCR) - Cost Estimating
30019 158th, Houston, TX 77046

Schuler Brock (SB) - Lighting & Theater Design
325 North Loop East, Suite 220, Dallas, TX 75201

Traffic Engineering Inc (TEI) - Streetscape & Mobility
811 Congress Ave., Suite 100, Houston, TX 77002

Water & Power (WP) - Waterproofing
1301 McKinney, Suite 1100, Houston, TX 77010

CONSULTANTS

NOTES

SETUP

LYNN WYATT SQUARE FOR THE PERFORMING ARTS

600 Louisiana St,
Houston, TX 77002

REVISIONS

ISSUES 08/14/20 ISSUED FOR BID

LEADER

DATE

LIGHTING PLAN

DATE 08/14/20

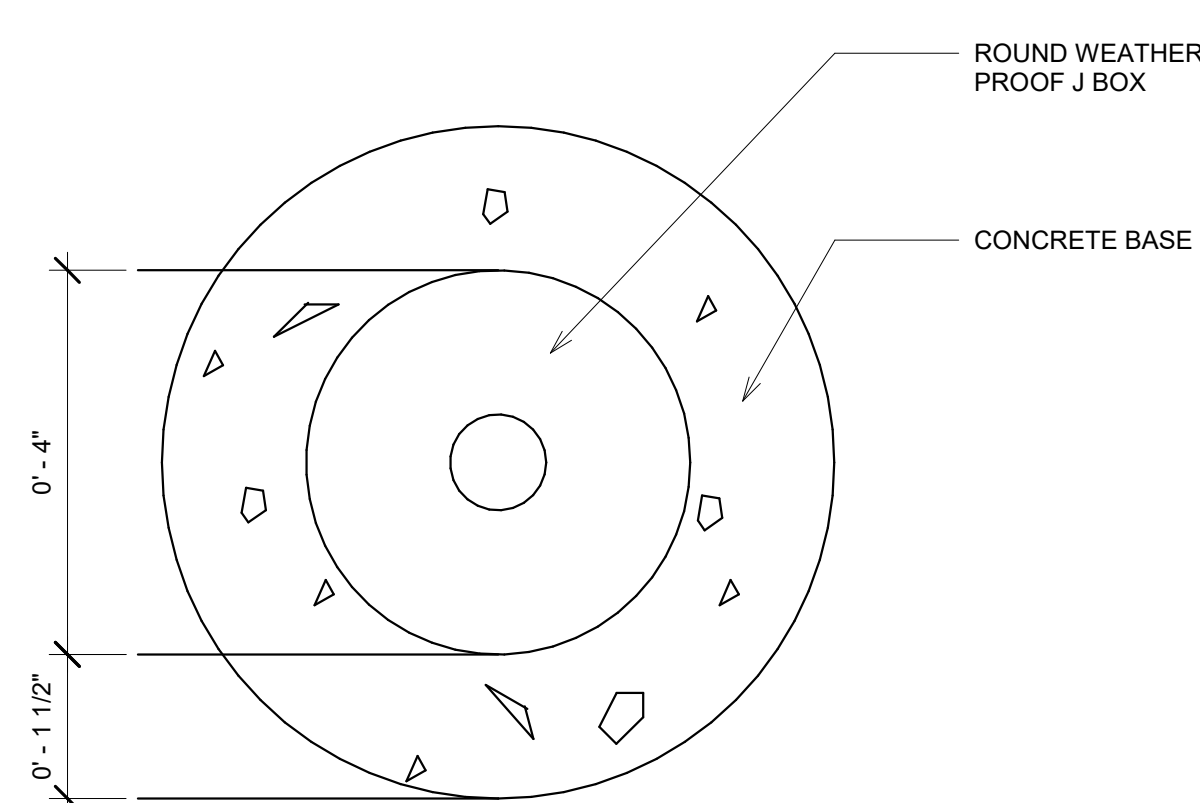
SCALE As indicated

LD1.01

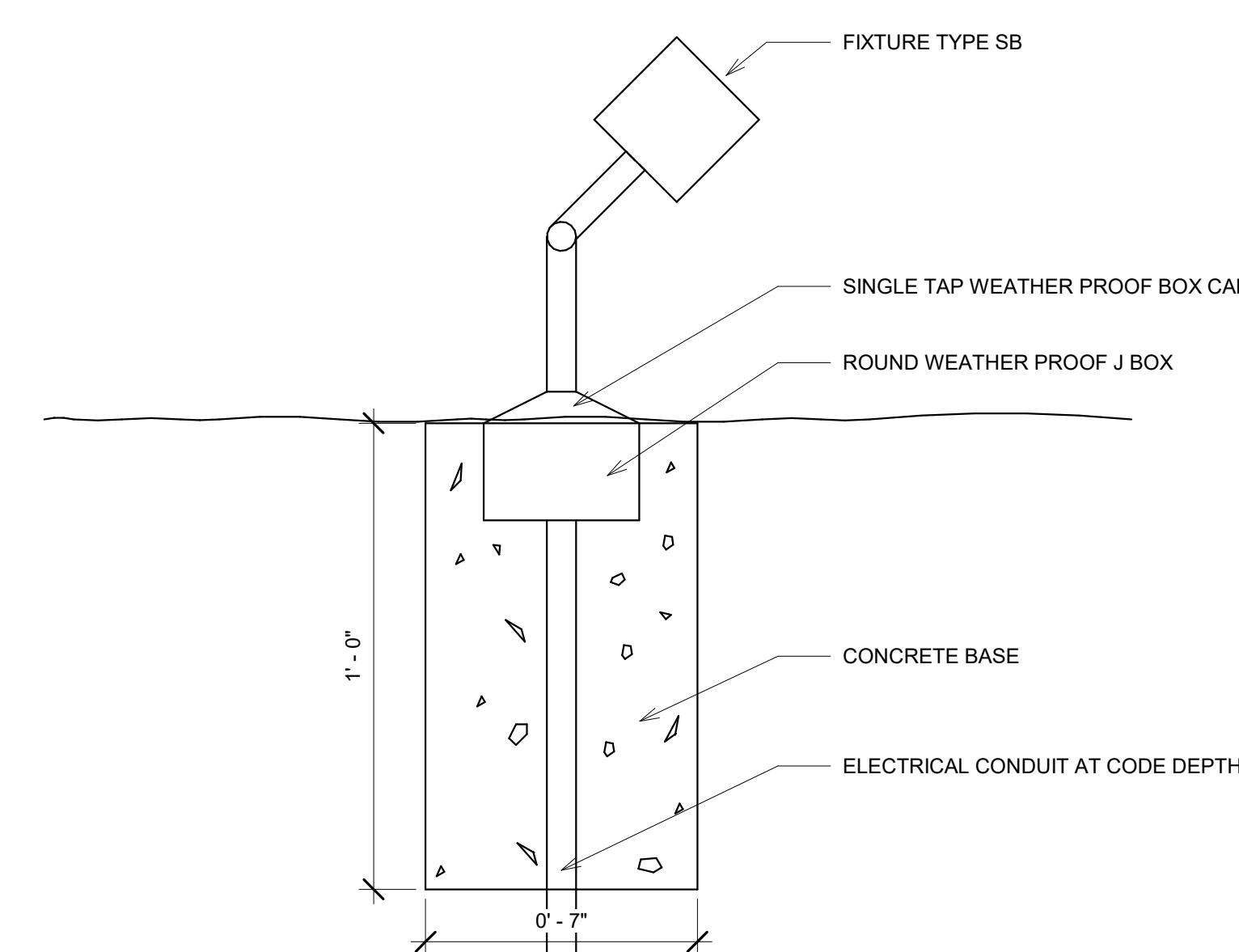
NOTES:
ALL FIXTURES SHALL HAVE BOTH POWER AND CONTROL (0-10V OR DMX) WIRING.
REFER TO ARCHITECTURAL DRAWINGS FOR EXACT LOCATIONS OF IN-GRADE THEATRICAL BOXES TA ANOTB.

KEY
TYPE
DMX ADDRESS

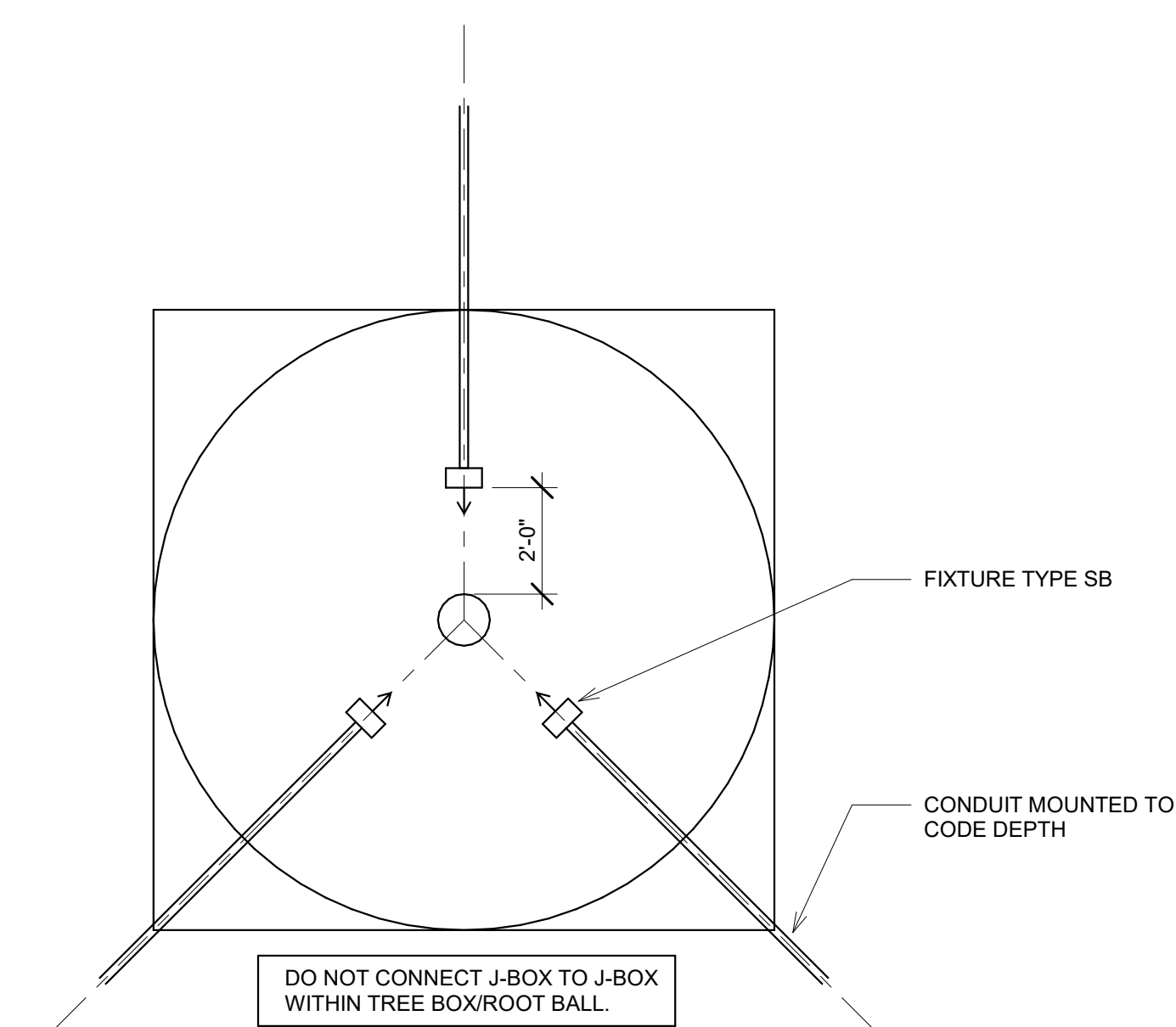
⊕ DUPLEX RECEPTACLE - LEGRAND MODEL XB814-XB814CS208K. INSTALL PER MANUFACTURERS RECOMMENDATIONS FOR DRAINAGE AND LEVELING.



4 PLAN - TREE UPLIGHT MOUNTING
SCALE: 6" = 1'-0"



3 SECTION - TREE UPLIGHT MOUNTING
SCALE: 3" = 1'-0"



2 TREE UPLIGHT CONDUIT LOCATION
SCALE: 12" = 1'-0"



1 LIGHTING PLAN
SCALE: 1" = 10'-0"

Houston First Corporation - Client
701 Avenida de las Americas, Ste. 200, Houston, TX 77010

Rios Clementi Hale Studios (RCHS)
Lead Landscape Architect & Lead Design Architect
3101 Exposition Place, Los Angeles, CA 90018

Asakura Robinson (AR) - Landscape Architecture & Irrigation
1822 Westwood Avenue, Ste. 4 Houston, TX 77027

EGC Engineering (EGC) - MEP Engineering
1015 Lamar, Suite 502, Houston, TX 77022

Fluidity Design (FD) - Water Feature Design
2750 Wilshire Blvd, Suite 230, Los Angeles, CA 90010

Gradient Group (GG) - Civil Engineering
2500 Clay West Blvd, Suite 300, Houston, TX 77042

Harrison Korbberg (HK) - Executive Architect
3800 Buffalo Speedway, Ste. 550, Houston, TX 77008

Henderson Rogers (HR) - Structural Engineering
2853 Augusta Dr, Suite 800, Houston, TX 77027

Jaffe Holden (JH) - Audio/Visual Consulting
1111 North Loop West Freeway, Ste. 520, Houston, TX 77008

Jordan Consultants LLC (JC) - Specifications
442 Heights Blvd, Houston, TX 77007

Project Cost Resources (PCR) - Cost Estimating
30017B 158, Richmond, TX 77406

Scholar Stock (SS) - Lighting & Theater Design
325 North Loop West, Suite 520, Houston, TX 77007

Traffic Engineering Inc (TEI) - Streetscape & Mobility
811 Congress Avenue, Houston, TX 77002

Walker & Moore (WM) - Hardscaping
1301 McKinney, Suite 1100, Houston, TX 77010

CONSULTANTS

REVISED

REVISIONS

LYNN WYATT SQUARE FOR THE PERFORMING ARTS

600 Louisiana St,
Houston, TX 77002

REVISIONS

ISSUES

08/14/20 ISSUED FOR BID

REVISIONS

DATE

LIGHTING CIRCUIT PLAN

DATE 08/14/2020

SCALE 1" = 10'-0"

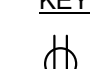
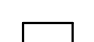
LD1.02

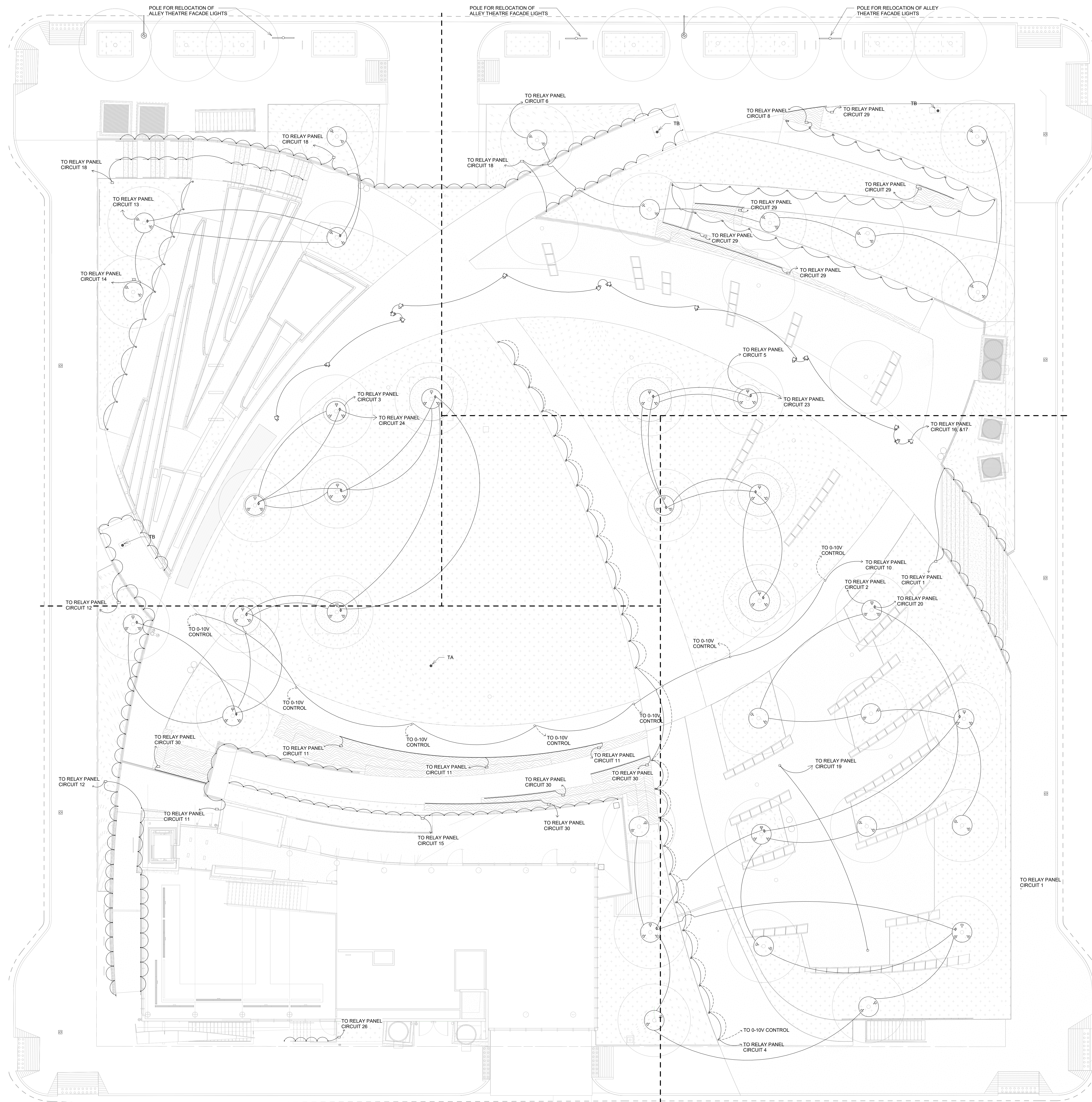
© RIOS CLEMENTI HALE STUDIOS

3101 W EXPOSITION PLACE LOS ANGELES, CA 90018

PH: 323.785.1800 FAX: 323.785.1801 www.rchstudios.com

NOTE
ALL FIXTURES SHALL HAVE BOTH POWER AND CONTROL (0-10V OR DMX) WIRING.

KEY
 DUPLEX RECEPTACLE - LEGRAND MODEL XBB14-XBB14CS20BK. INSTALL PER MANUFACTURERS RECOMMENDATIONS FOR DRAINAGE AND LEVELING.
 DRIVER



1 LIGHTING CIRCUIT PLAN
SCALE: 1" = 10'-0"

Houston First Corporation - Client
701 Avenida de las Americas, Ste. 200, Houston, TX 77001

Rios Clementi Hale Studios (RCHS)
Lead Landscape Architect & Lead Design Architect
3101 Exposition Place, Los Angeles, CA 90018

Asakura Robinson (AR) - Landscape Architecture & Irrigation
1822 Westwood Avenue, Ste A Houston, TX 77027

B&C Engineering (E&C) - MEP Engineering
1033 Lamar, Suite 602, Houston, TX 77002

Fluidity Design (FD) - Water Features Design
2750 Wilshire Blvd, Suite 230, Los Angeles, CA 90010

Gradient Group (GG) - Civil Engineering
2500 Clay West Blvd, Suite 300, Houston, TX 77042

Harrison Korbberg (HK) - Executive Architect
3800 Buffalo Speedway, Ste 550, Houston, TX 77008

Henderson Rogers (HR) - Structural Engineering
2853 Augusta Dr, Suite 800, Houston, TX 77057

Jaffe Holden (JH) - Audio/Visual Consulting
1111 North Loop West Freeway, Ste 520, Houston, TX 77009

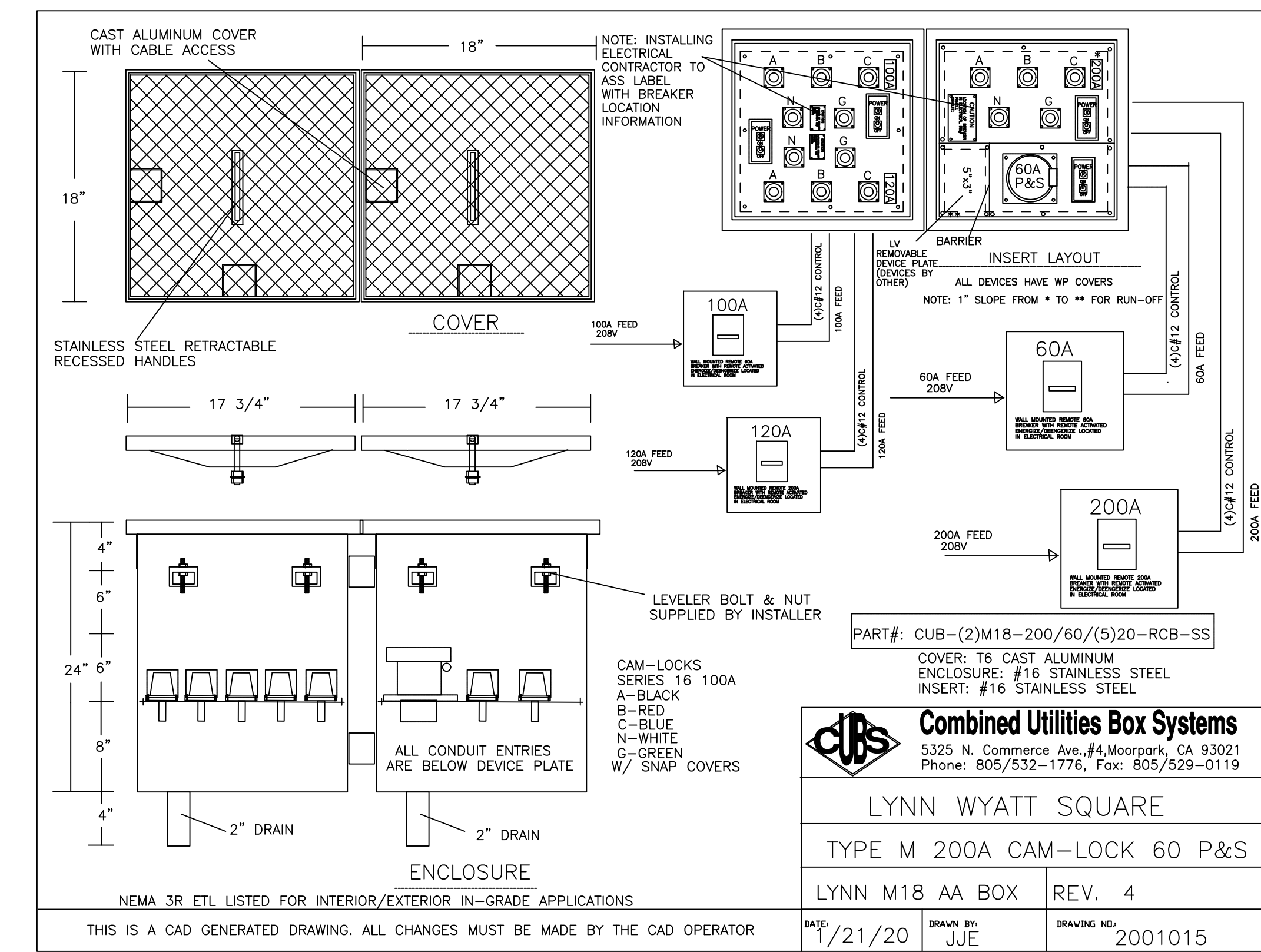
Jordan Consultants LLC (JC) - Specifications
402 Heights Blvd, Houston, TX 77001

Project Cost Resources (PCR) - Cost Estimating
30019138, Richmond, TX 77406

Schuler Brock (SB) - Lighting & Theater Design
325 North Loop West, Suite 520, Houston, TX 77001

Traffic Engineering Inc (TE) - Streetscape & Mobility
811 Congress Ave #502, Houston, TX 77002

Water & Power (WP) - Waterproofing
1301 McKinney, Suite 1100, Houston, TX 77010



2 TYPE TA - LARGE STAGE
NO SCALE

CONSULTANTS

NOTES

SETUP

LYNN WYATT SQUARE FOR THE PERFORMING ARTS

600 Louisiana St,
Houston, TX 77002

REVISION

ISSUES

REVISION

DATE

DATE

DATE

DATE

DATE

DATE

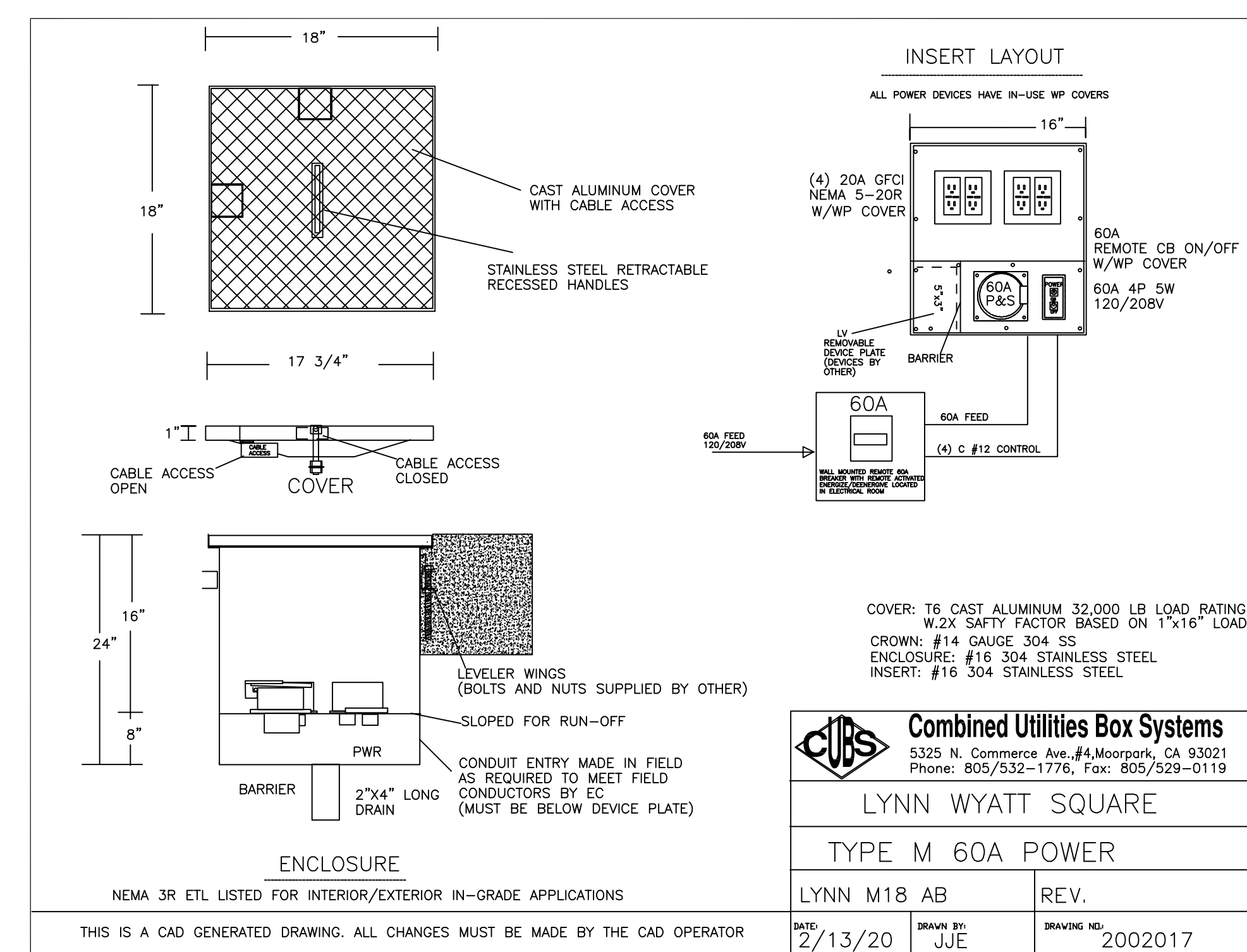
DATE

DATE

DATE

DATE

DATE



1 TYPE TB - SMALL STAGE
NO SCALE

08/14/20 ISSUED FOR BID

THEATRICAL ELECTRICAL DETAILS

08/14/2020

NO SCALE

LD4.01