

LIGHTING SYMBOLOGY TABLE

WIRING DEVICES SYMBOLOGY TABLE

LIGHTNING PROTECTION & GROUNDING SYMBOLOGY TABLE

POWER SYMBOLOGY TABLE

RACEWAYS SYMBOLOGY TABLE

HOSPITAL SYMBOLOGY TABLE

MISCELLANEOUS SYMBOLOGY TABLE

SINGLE LINE DIAGRAM SYMBOLOGY TABLE

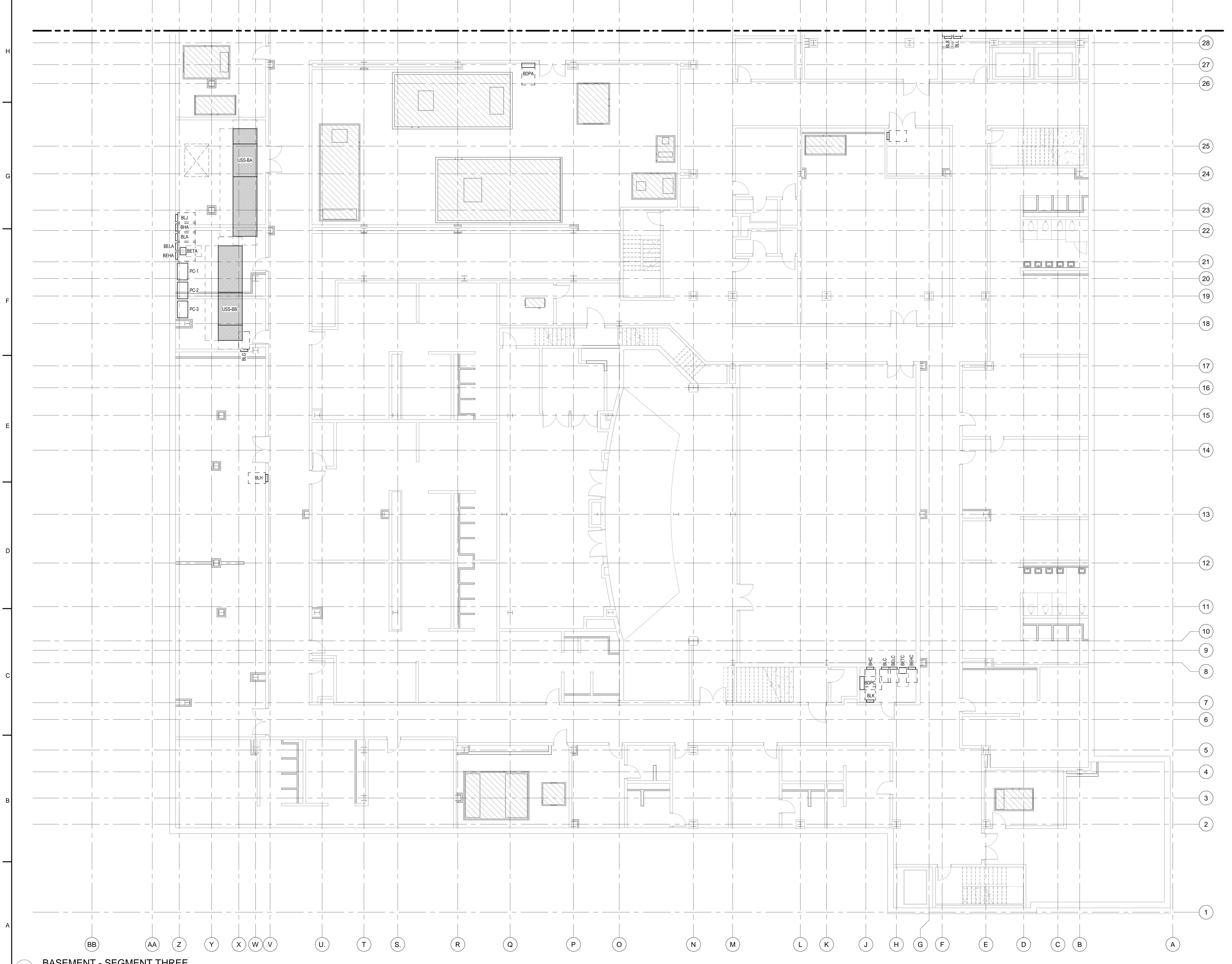
TRANSFORMER WITH PRIMARY AND SECONDARY CONNECTIONS

FIRE ALARM SYMBOLS SYMBOLOGY TABLE

ABBREVIATIONS SYMBOLOGY TABLE

ELECTRICAL DRAWING LIST

Issue for Bid 01-12-2018 WORTHAM THEATER REHABILITATION Houstonfirst. HarrisonKornberg/ARUP. Project Team: ARCHITECT HarrisonKornberg, CIVIL ENGINEER Martinez Moore, MEP ENGINEER Arup, PARKING CONSULTANT Walker Parking, ACOUSTICS / AV / IT Jaffe Holden. PACKAGE 1 ELECTRICAL - SYMBOLS, ABBREVIATIONS, AND DRAWING LIST WT-1-E.0.1 Scale: 12" = 1'-0"

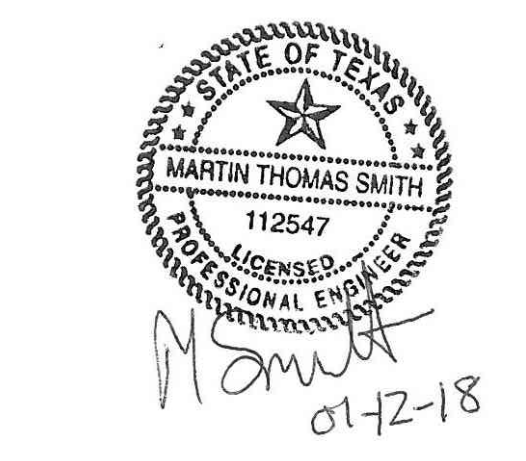


Issue for Bid
 01-12-2018

**WORTHAM
 THEATER
 REHABILITATION**
 501 Texas Ave
 Houston, TX 77002

Houstonfirst.
 701 Avenida de las Americas
 Houston, TX 77010

HarrisonKornberg/ARUP
 3800 Buffalo Speedway, Suite 550
 Houston, Texas 77098
 tel (713) 229-0688
 fax (713) 229-0692



© Copyright 2018
 All information shown, written, or printed appearing in this document constitutes the original and unpublished work of HarrisonKornberg Architects, LLC and may not be duplicated, distributed, or disclosed by any means without the prior written consent of HarrisonKornberg Architects, LLC. This is an instrument of services and sole property of the author. This use of the document shall be limited to any of the design intent or the construction methods shown herein and not subjected to, or the terms of the contractual agreement for its use is voided.
 Written dimensions on these drawings shall have precedence over scale dimensions. Contractors shall be responsible for all dimensions and conditions on the job.
 HarrisonKornberg Architects, LLC must be notified of any violation from the dimension and conditions shown by these drawings.

Revisions

No.	Date	Description

Project Team

ARCHITECT
HarrisonKornberg
 Contact: David Kaczynski
 t: 713.229.0688

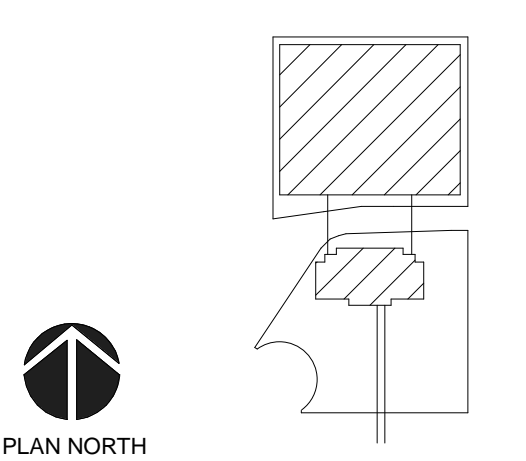
CIVIL ENGINEER
Martinez Moore
 Contact: TBD
 t: TBD

MEP ENGINEER
Arup
 Contact: Tom Smith
 t: 713.343.1472

PARKING CONSULTANT
Walker Parking
 Contact: Jeremy Rocha
 t: TBD

ACOUSTICS / AV / IT
Jaffe Holden
 Contact: Garth Hemphill
 t: TBD

Key Plan



PACKAGE 1
ELECTRICAL -
SEGMENT THREE -
BASEMENT - POWER
PLAN

WT-1-E.2.30

Scale: 1/8" = 1'-0"

1 BASEMENT - SEGMENT THREE
 1/8" = 1'-0"

Issue for Bid
01-12-2018

WORTHAM THEATER REHABILITATION

501 Texas Ave
Houston, TX 77002

Houstonfirst.

701 Avenida de las Americas
Houston, TX 77010

HarrisonKornberg/ARUP

3800 Buffalo Speedway, Suite 550
Houston, Texas 77098
Tel: (713) 229-0668
Fax: (713) 229-0692



© Copyright 2018
All information shown, written, or printed appearing in this document constitutes the original and unpublished work of HarrisonKornberg Architects, LLC and may not be duplicated, distributed, or disclosed by any means without the prior written consent of HarrisonKornberg Architects, LLC. This is an instrument of services and sole property of the author. This use of the document shall be restricted to any of the design intent or the construction methods shown herein and not adhered to, or the terms of the contractual agreement for its use is voided.
Written dimensions on these drawings shall have precedence over scale dimensions. Contractors shall be responsible for all dimensions and conditions on the job. HarrisonKornberg Architects, LLC must be notified of any violation from the dimensions and conditions shown by these drawings.

Revisions

No.	Date	Description

Project Team

ARCHITECT
HarrisonKornberg
Contact: David Kaczynski
t: 713.229.0688

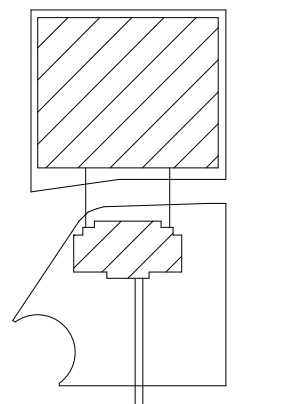
CIVIL ENGINEER
Martinez Moore
Contact: TBD
t: TBD

MEP ENGINEER
Arup
Contact: Tom Smith
t: 713.343.1472

PARKING CONSULTANT
Walker Parking
Contact: Jeremy Rocha
t: TBD

ACOUSTICS / AV / IT
Jaffe Holden
Contact: Garth Hemphill
t: TBD

Key Plan



PLAN NORTH

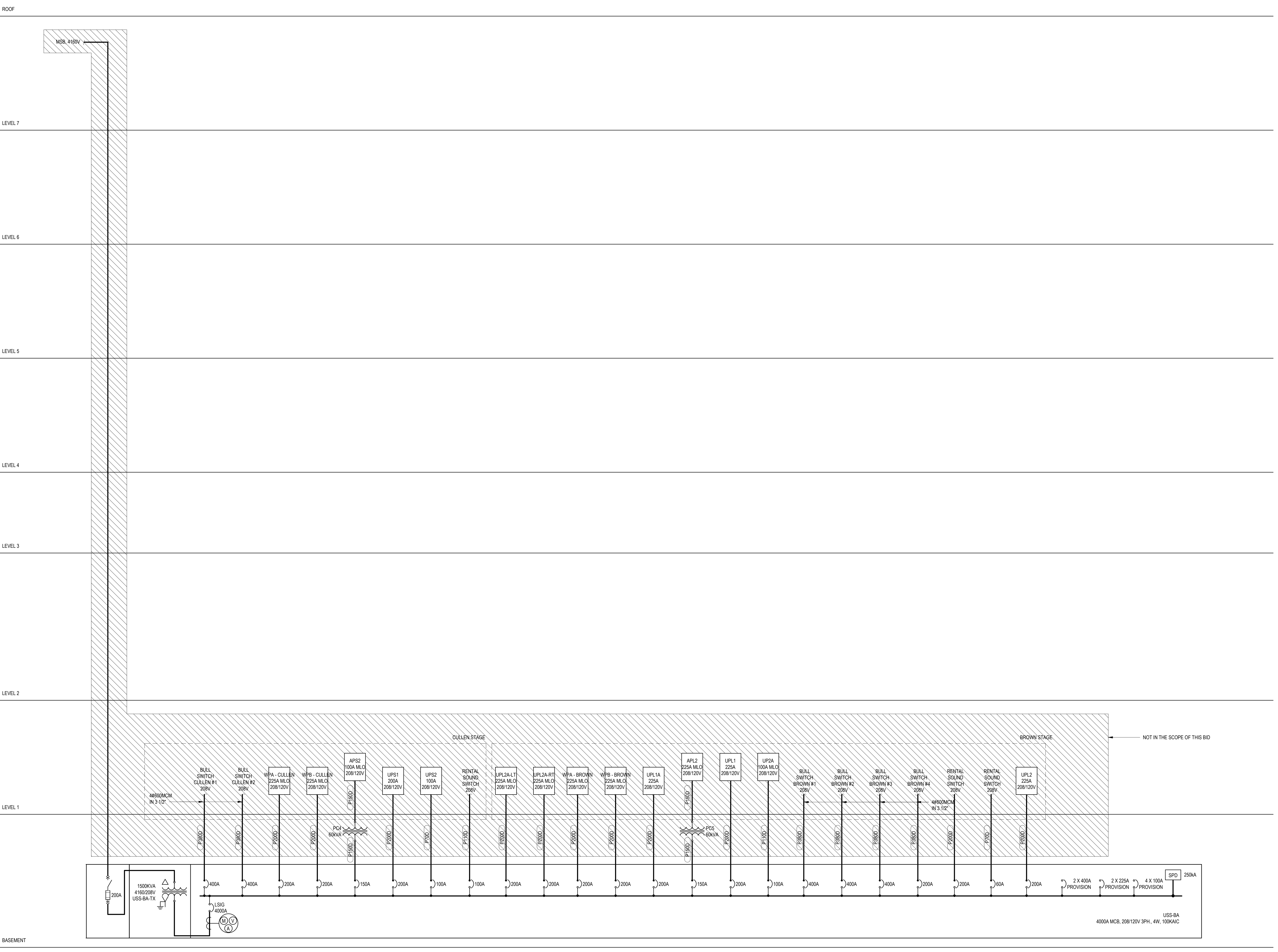
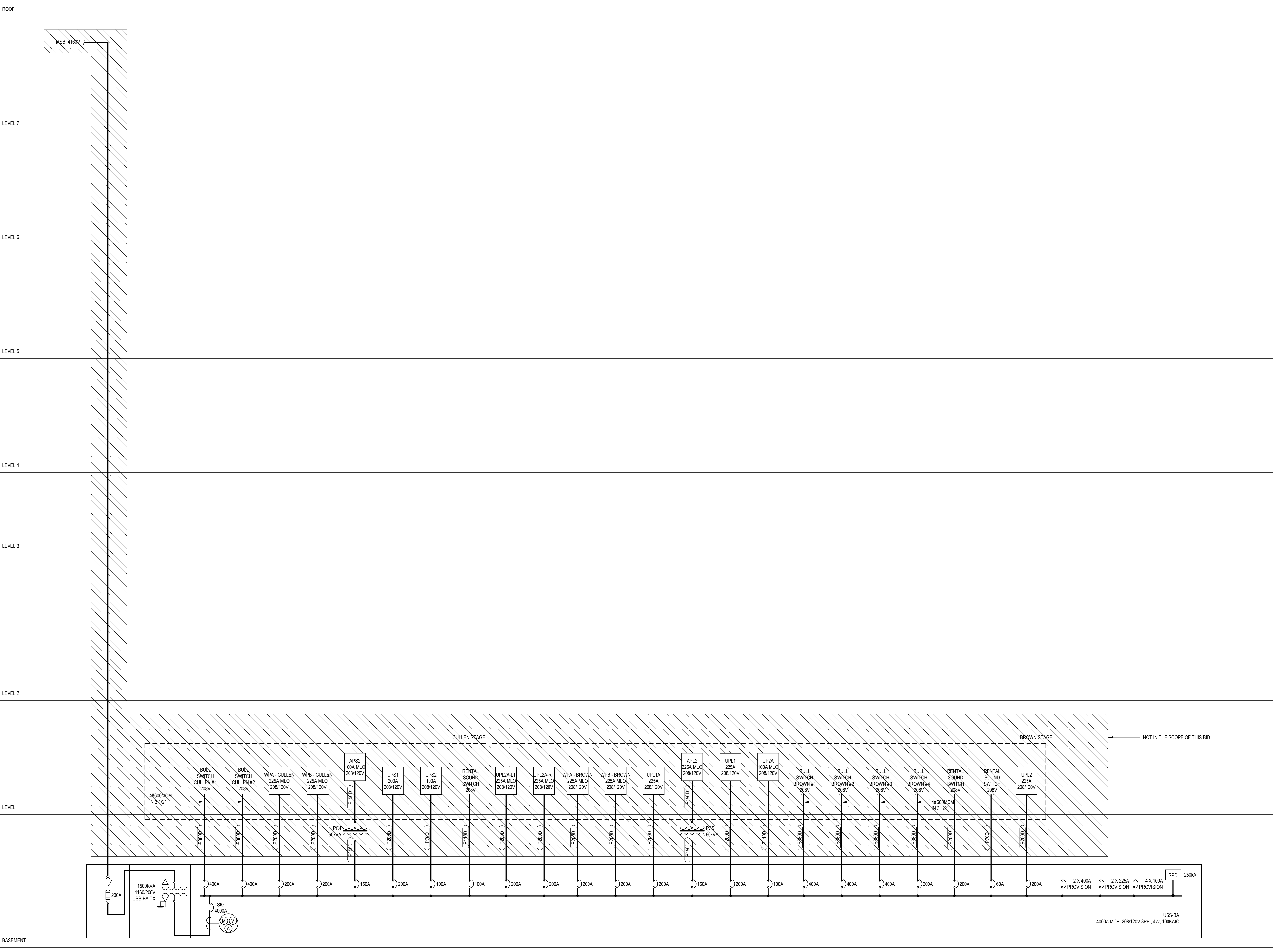
PACKAGE 1

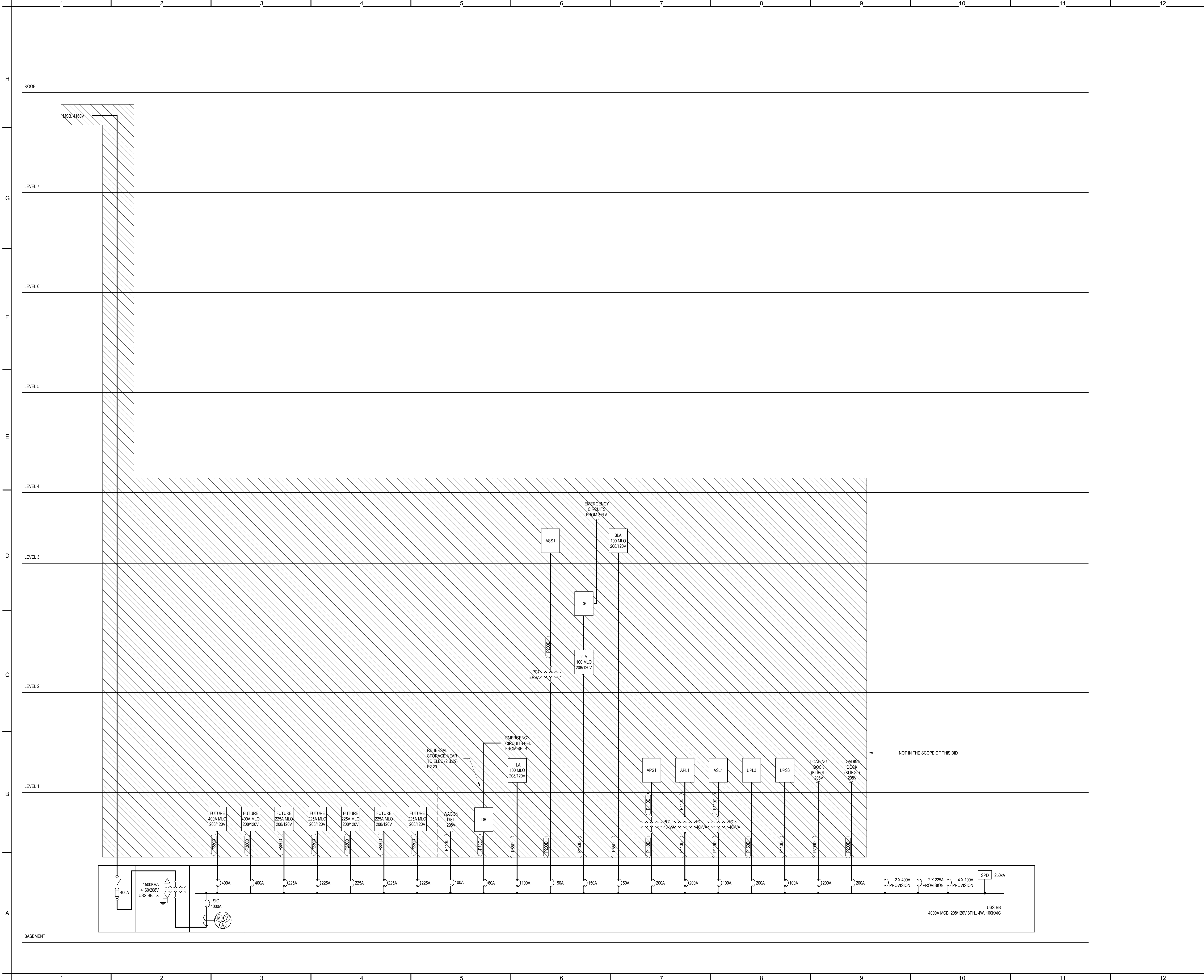
ELECTRICAL - SINGLE LINE DIAGRAM - SHEET 1

WT-1-E.4.00.1

Scale: 12" = 1'-0"

Project Name: HFR Date: 12/27/2017





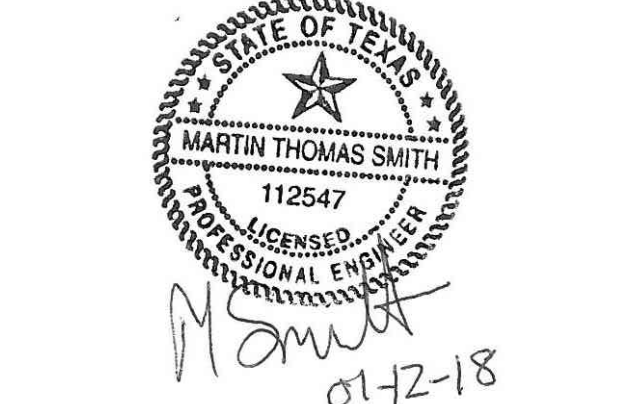
Issue for Bid
01-12-2018

WORTHAM THEATER REHABILITATION

501 Texas Ave
Houston, TX 77002

Houstonfirst.
701 Avenida de las Americas
Houston, TX 77010

HarrisonKornberg/ARUP
3800 Buffalo Speedway, Suite 550
Houston, Texas 77098
tel: (713) 229-0668
fax: (713) 229-0692



© Copyright 2018
All information shown, written or printed, appearing in this document constitutes the original and unpublished work of HarrisonKornberg Architects, LLC and may not be duplicated, distributed, or disclosed by any means without the prior written consent of HarrisonKornberg Architects, LLC. This is an instrument of services and sole property of the author. This use of the document shall be restricted if any of the design intent or the construction methods shown herein are not adhered to, or the terms of the contractual agreement for its use is violated.
Written dimensions on these drawings shall have precedence over scale dimensions. Contractors shall be responsible for all dimensions and conditions on the job.
HarrisonKornberg Architects, LLC must be notified of any variation from the dimensions and conditions shown by these drawings.

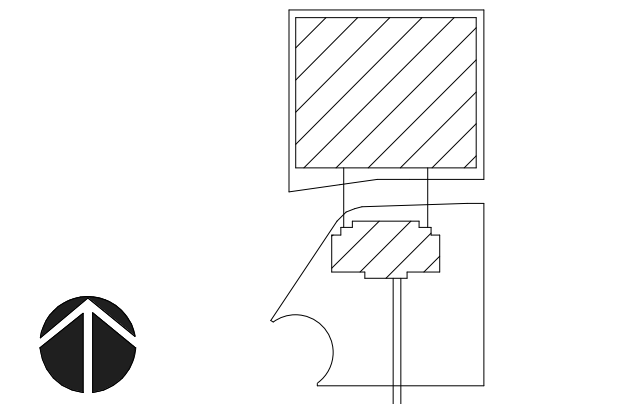
Revisions

No.	Date	Description

Project Team

- ARCHITECT**
HarrisonKornberg
Contact: David Kaczynski
t: 713.229.0688
- CIVIL ENGINEER**
Martinez Moore
Contact: TBD
t: TBD
- MEP ENGINEER**
Arup
Contact: Tom Smith
t: 713.343.1472
- PARKING CONSULTANT**
Walker Parking
Contact: Jeremy Rocha
t: TBD
- ACOUSTICS / AV / IT**
Jaffe Holden
Contact: Garth Hemphill
t: TBD

Key Plan

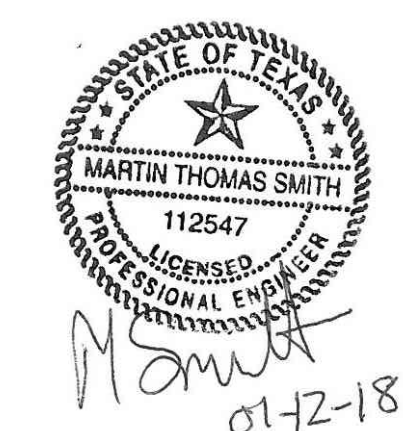


PACKAGE 1

ELECTRICAL - SINGLE LINE DIAGRAM - SHEET 2

WT-1-E.4.00.2

Scale: 12" = 1'-0"
Project Name: HFR Date: 12/27/2017



© Copyright 2018
All information shown, written, or printed, appearing in this document constitutes the original and unpublished work of HarrisonKornberg Architects, LLC. It shall not be duplicated, distributed, or disclosed by any means without the prior written consent of HarrisonKornberg Architects, LLC. This is an instrument of services and sole property of the author. The use of this document shall be limited to any of the design intent or the construction methods shown herein and not adhered to, or the terms of the contractual agreement for its use is voided.
Written dimensions on these drawings shall have precedence over scale dimensions. Contractors shall be responsible for all dimensions and conditions on the job. HarrisonKornberg Architects, LLC must be notified of any violation from the dimensions and conditions shown by these drawings.

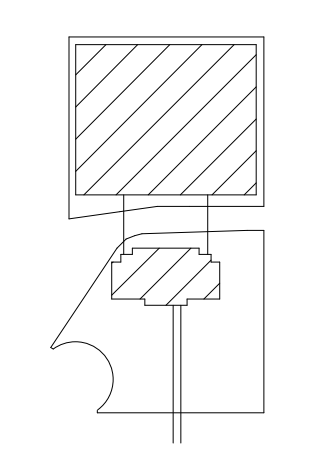
Revisions

No.	Date	Description

Project Team

- ARCHITECT**
HarrisonKornberg
Contact: David Kaczynski
t: 713.229.0688
- CIVIL ENGINEER**
Martinez Moore
Contact: TBD
t: TBD
- MEP ENGINEER**
Arup
Contact: Tom Smith
t: 713.343.1472
- PARKING CONSULTANT**
Walker Parking
Contact: Jeremy Rocha
t: TBD
- ACOUSTICS / AV / IT**
Jaffe Holden
Contact: Garth Hemphill
t: TBD

Key Plan

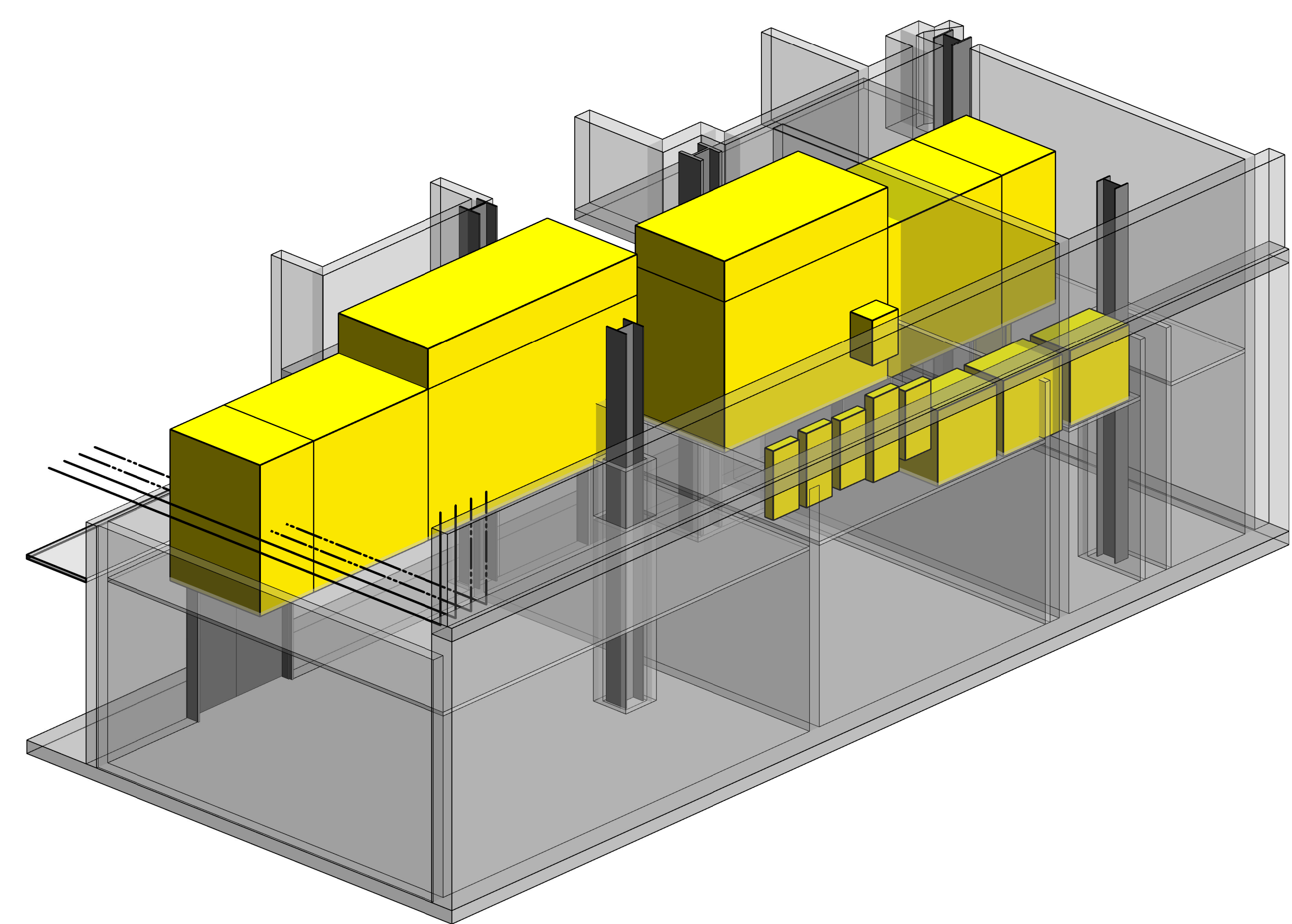


PACKAGE 1

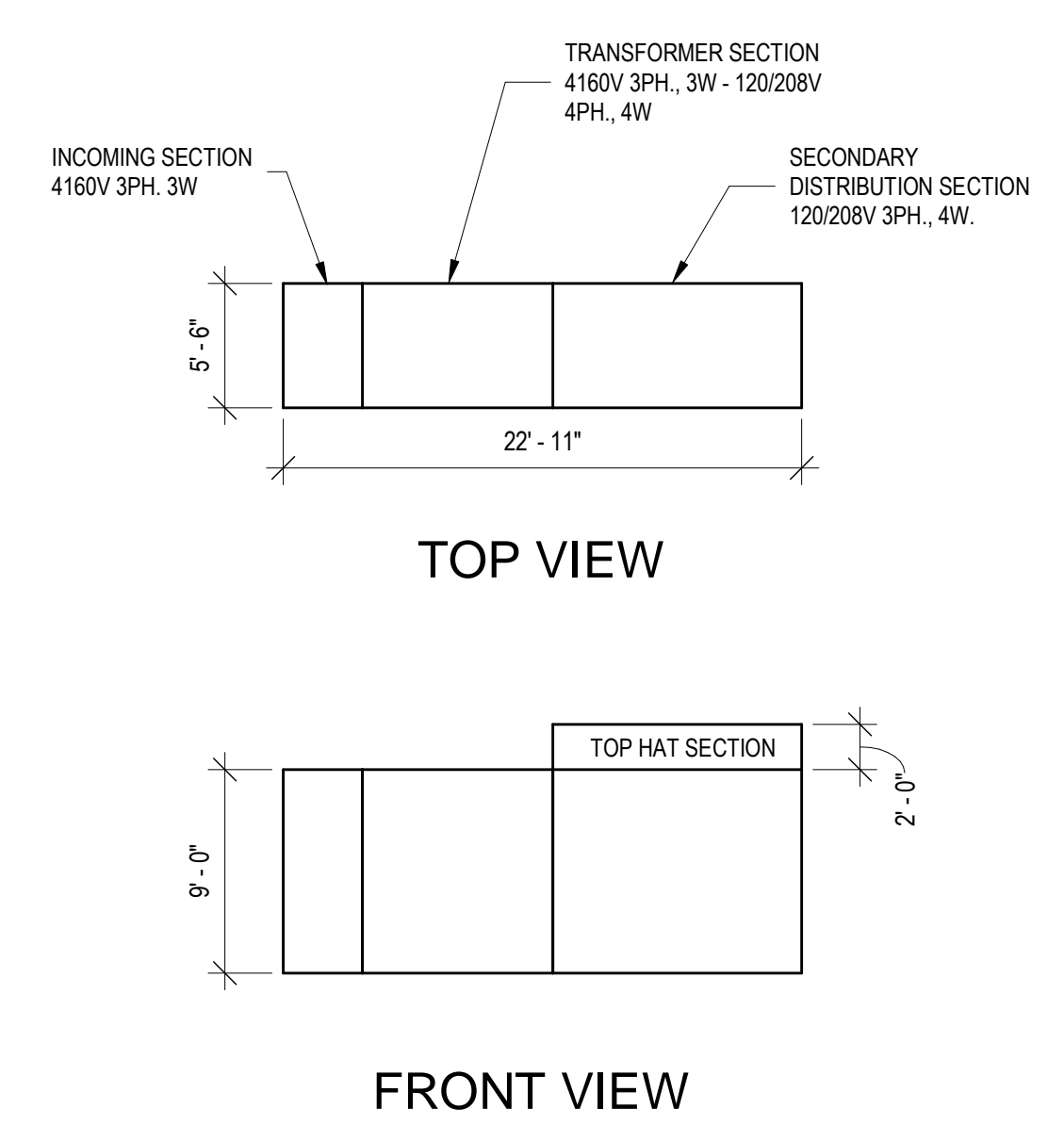
ELECTRICAL - BASEMENT - PARTIAL PLANS

WT-1-E.7.00.1

Scale: As indicated
Project Name: HFR Date: 12/27/2017

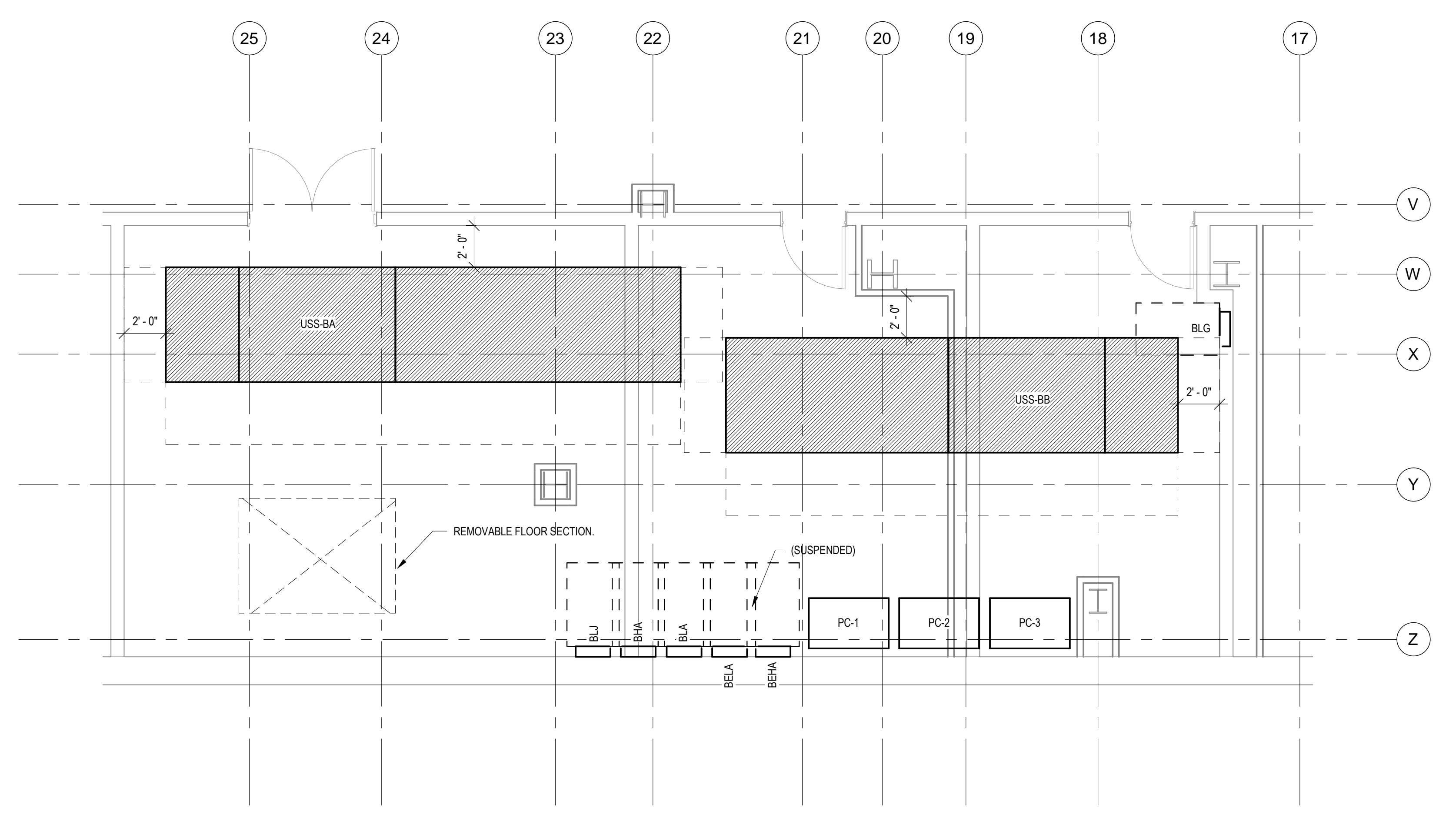


2 Electrical Room B80 Isometric



3 TYPICAL UNIT SUBSTATION ELEVATION DETAIL
1/8" = 1'-0"

*NOTE: DIMENSIONS ARE PROVIDED AS MAXIMUMS FOR A FRONT ACCESS ONLY UNIT SUBSTATION. REFER TO SINGLE LINE DIAGRAMS FOR ADDITIONAL INFORMATION.



1 Enlarged Electrical Room B80
1/4" = 1'-0"