

EXHIBIT "B"
Maps of Service Areas

Fig. 1(a): George R. Brown Convention Center and Partnership Tower

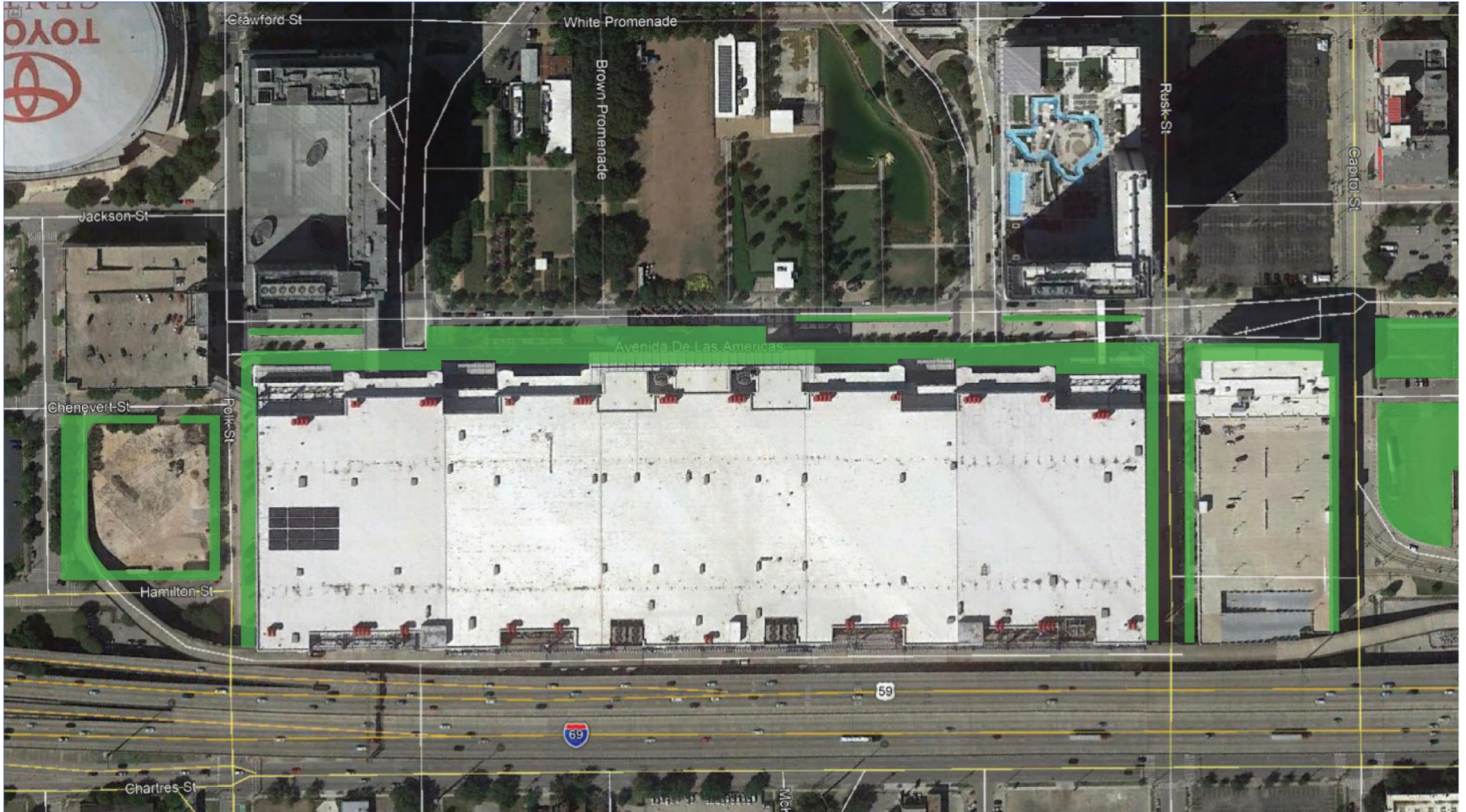


Fig. 1(b): U.S. 59/I-69 ROW (part of the GRB service area)



Fig. 1(c): Ruiz St. Staging Lot (part of the GRB service area)

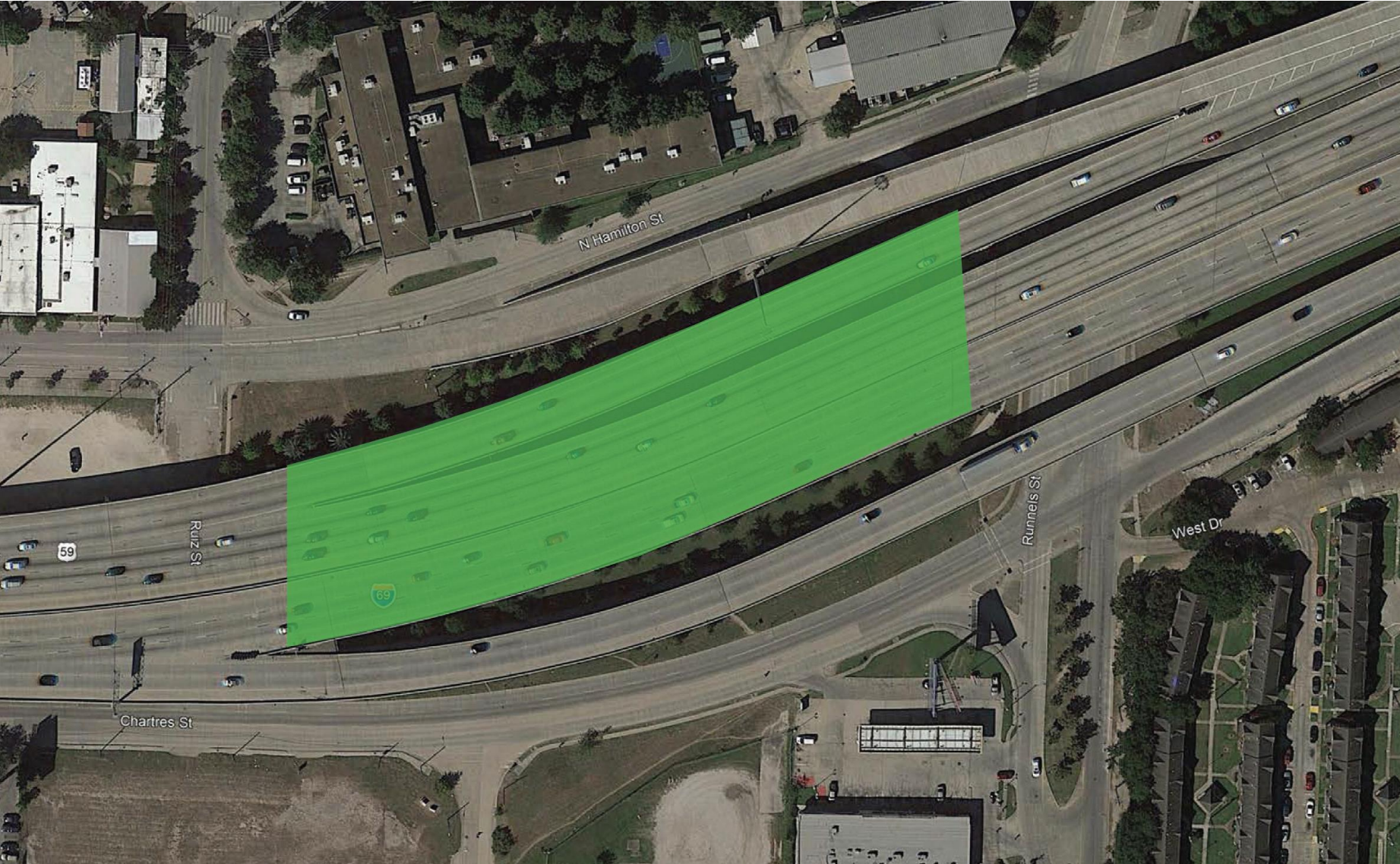


Fig. 2: Lots C and H

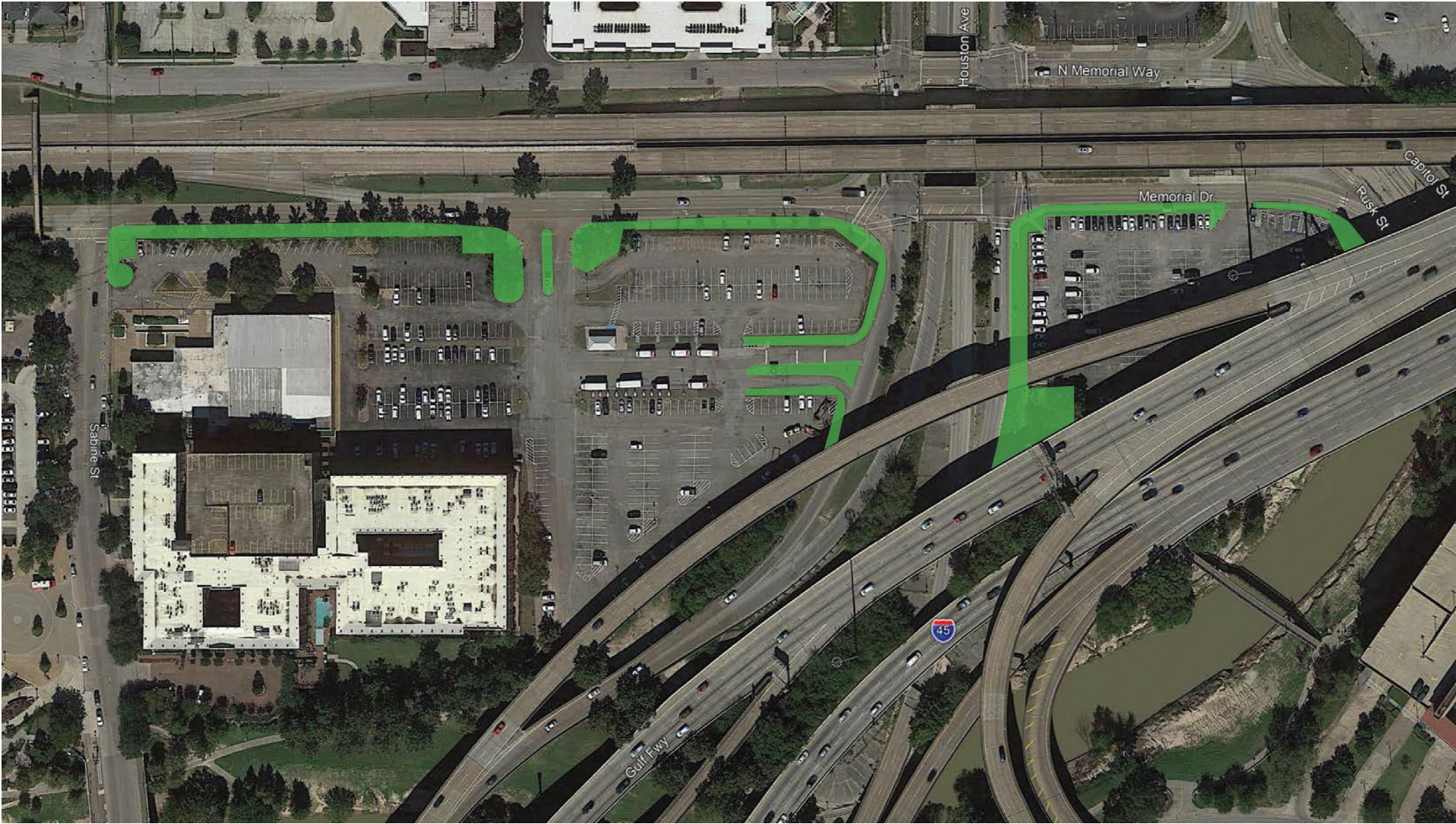


Fig. 3: Lynn Wyatt Square (f/k/a Jones Plaza) and Jones Hall

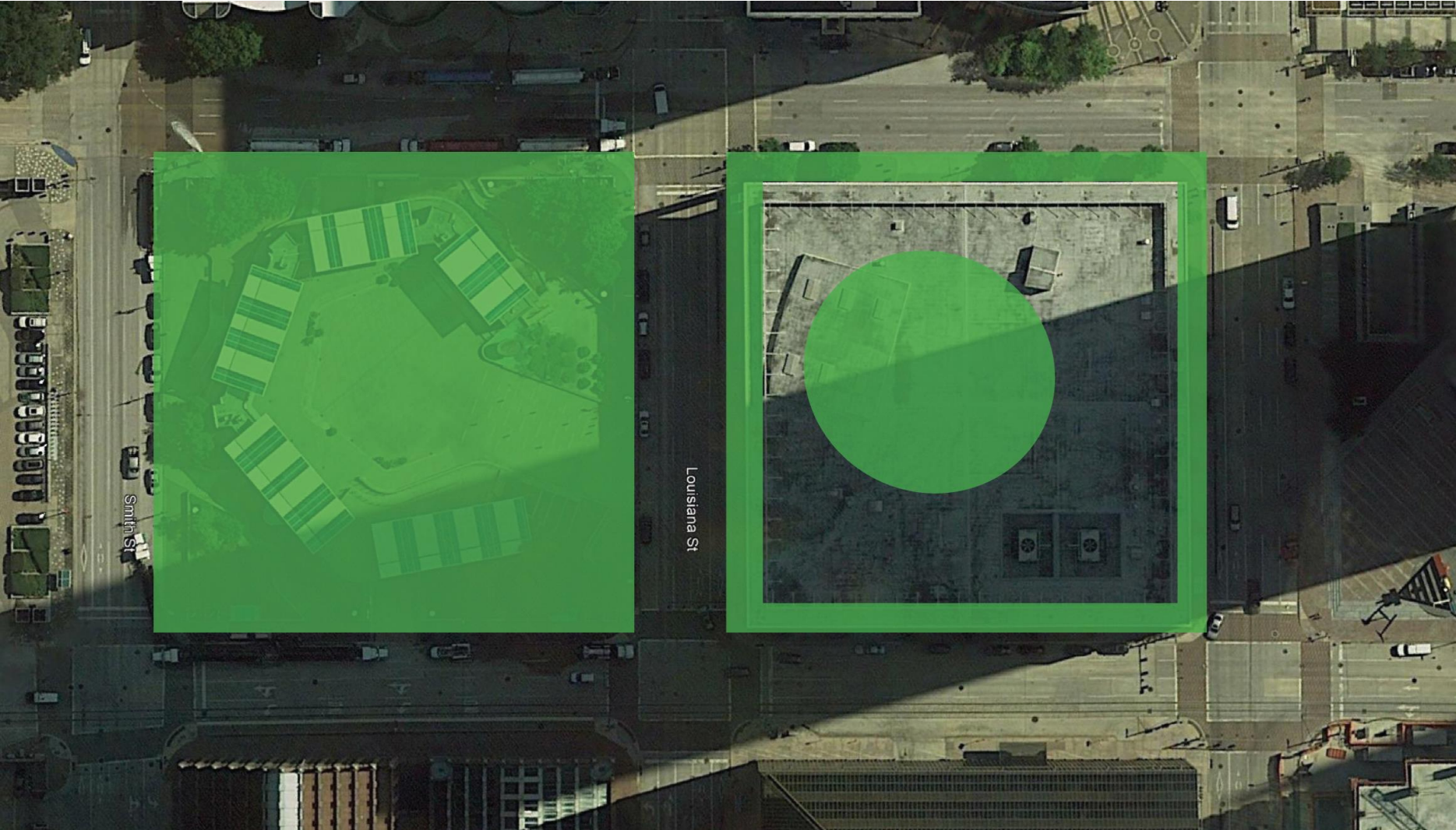


Fig. 4: Miller Outdoor Theatre



Fig. 5: Root Memorial Square



Fig. 6: Sweeney Clock and Historic Oak Tree

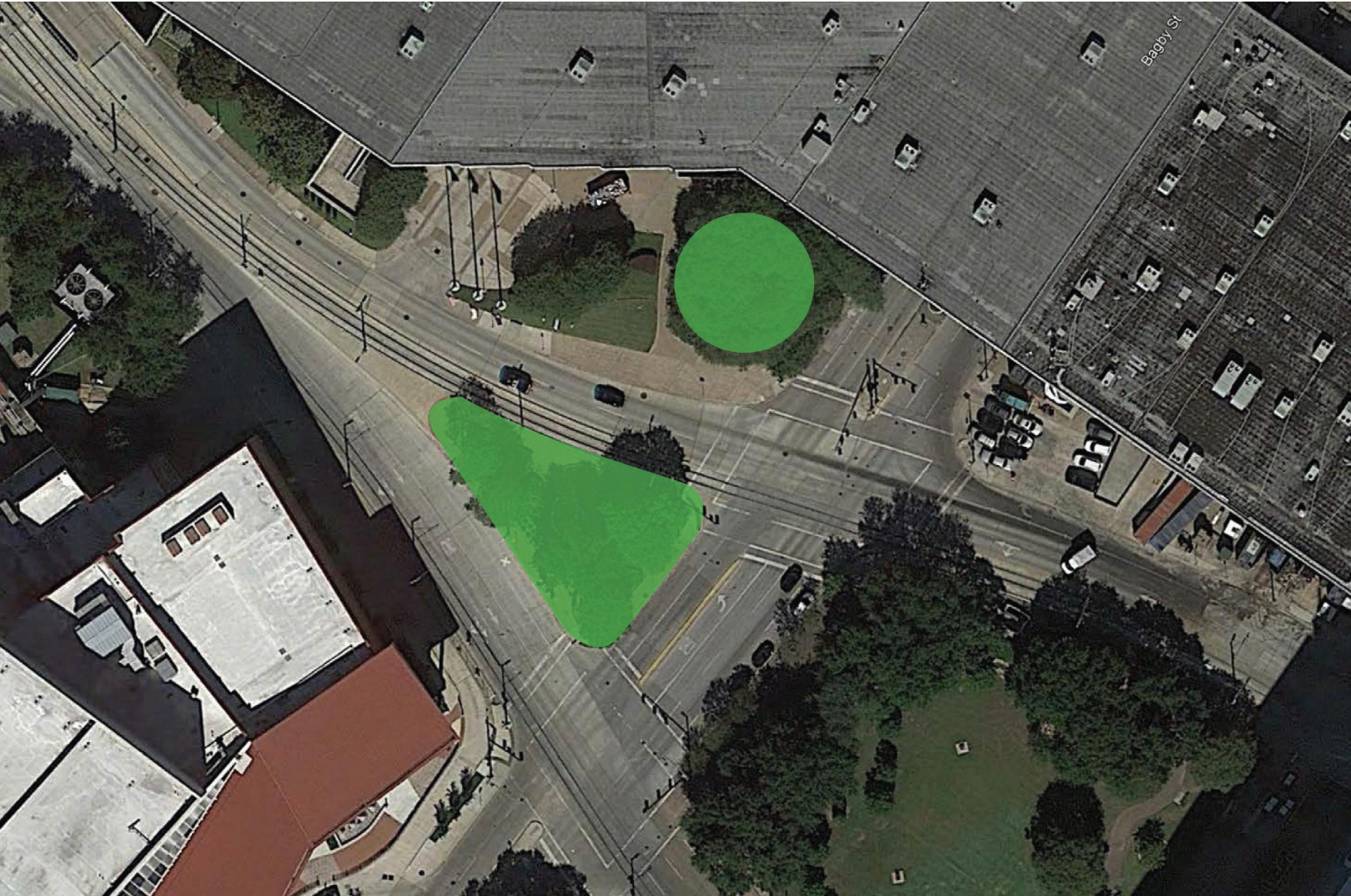


Fig. 7: TBH

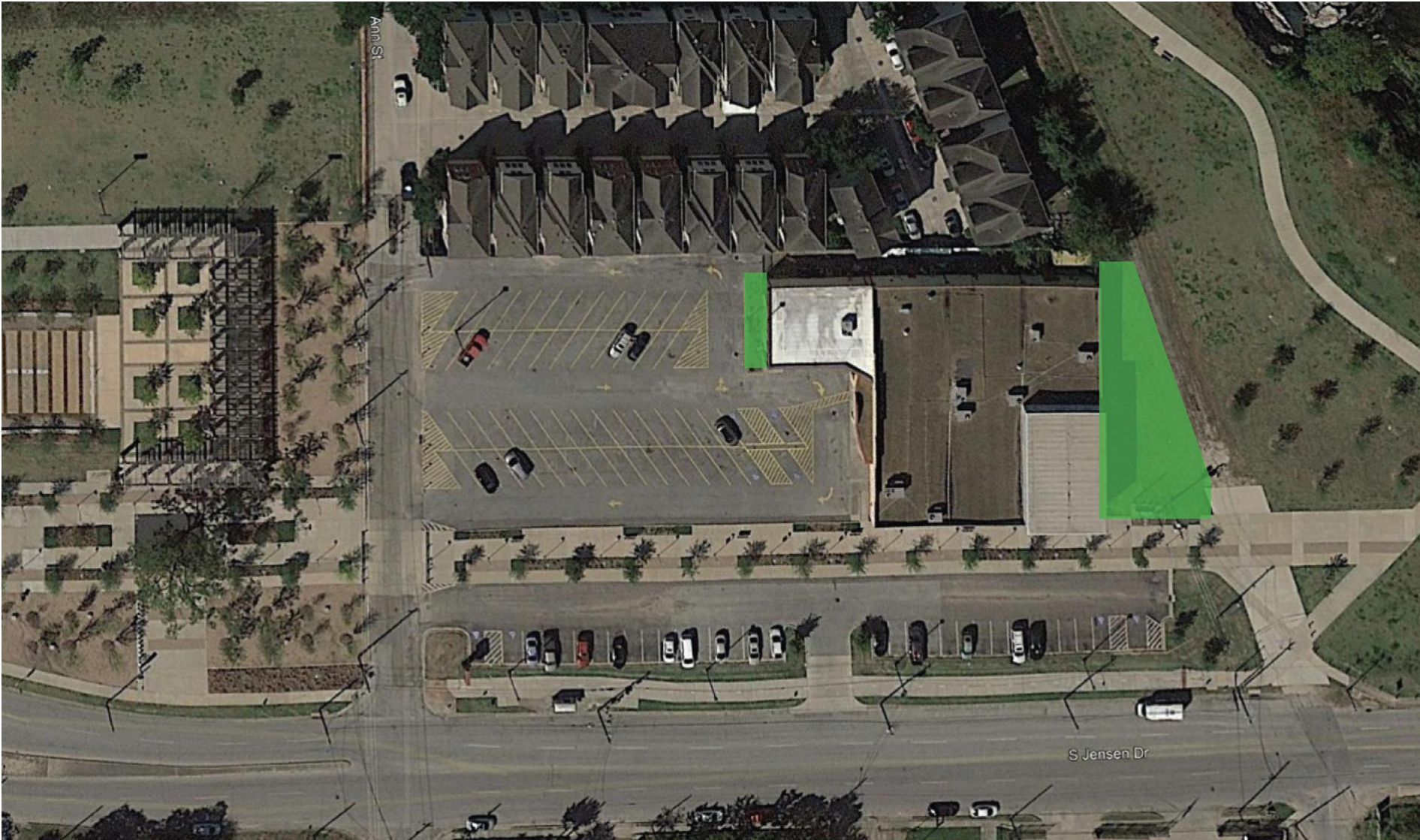


Fig. 8: Tundra Garage

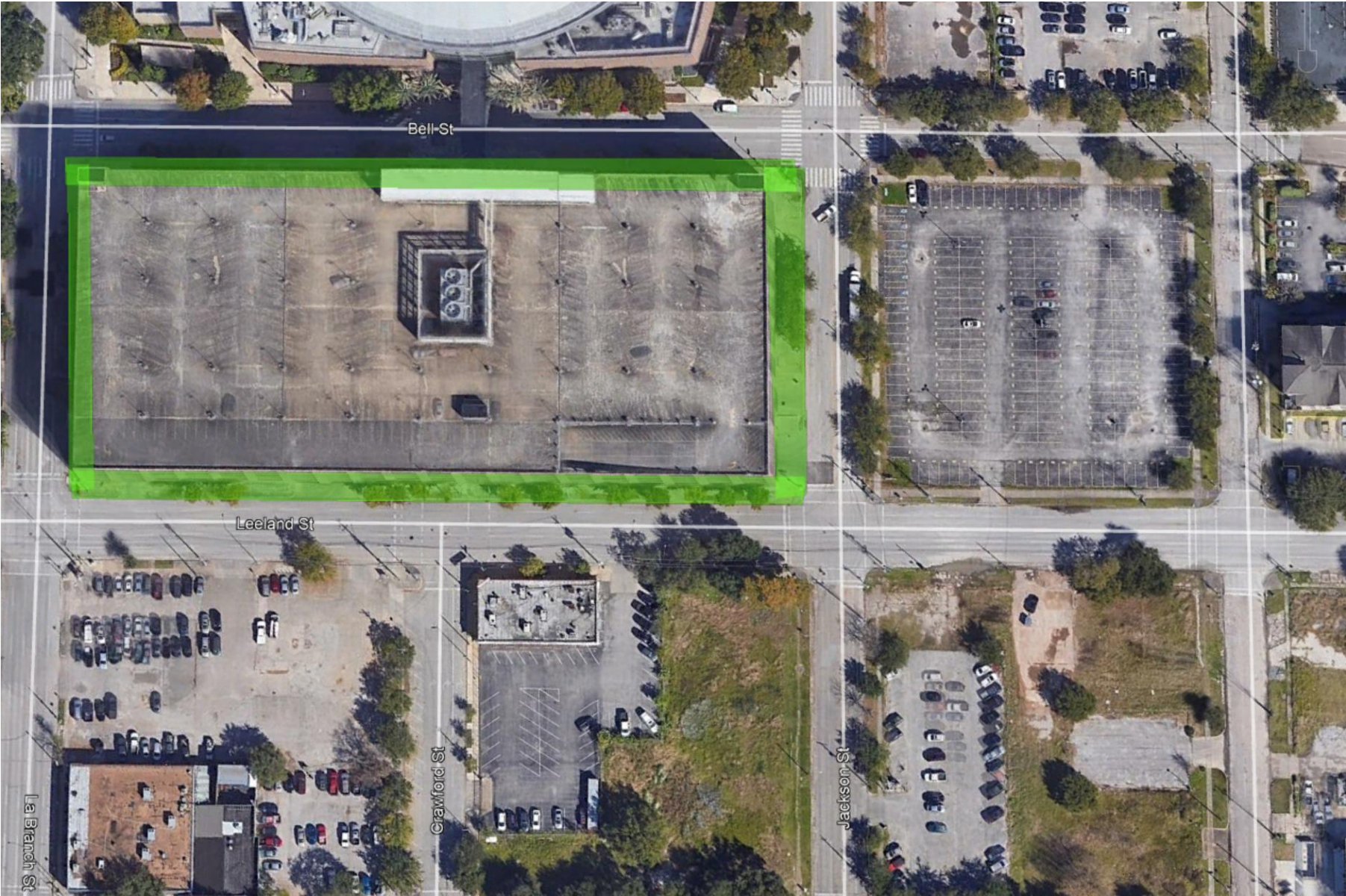


Fig. 9: Wortham Theater Center

