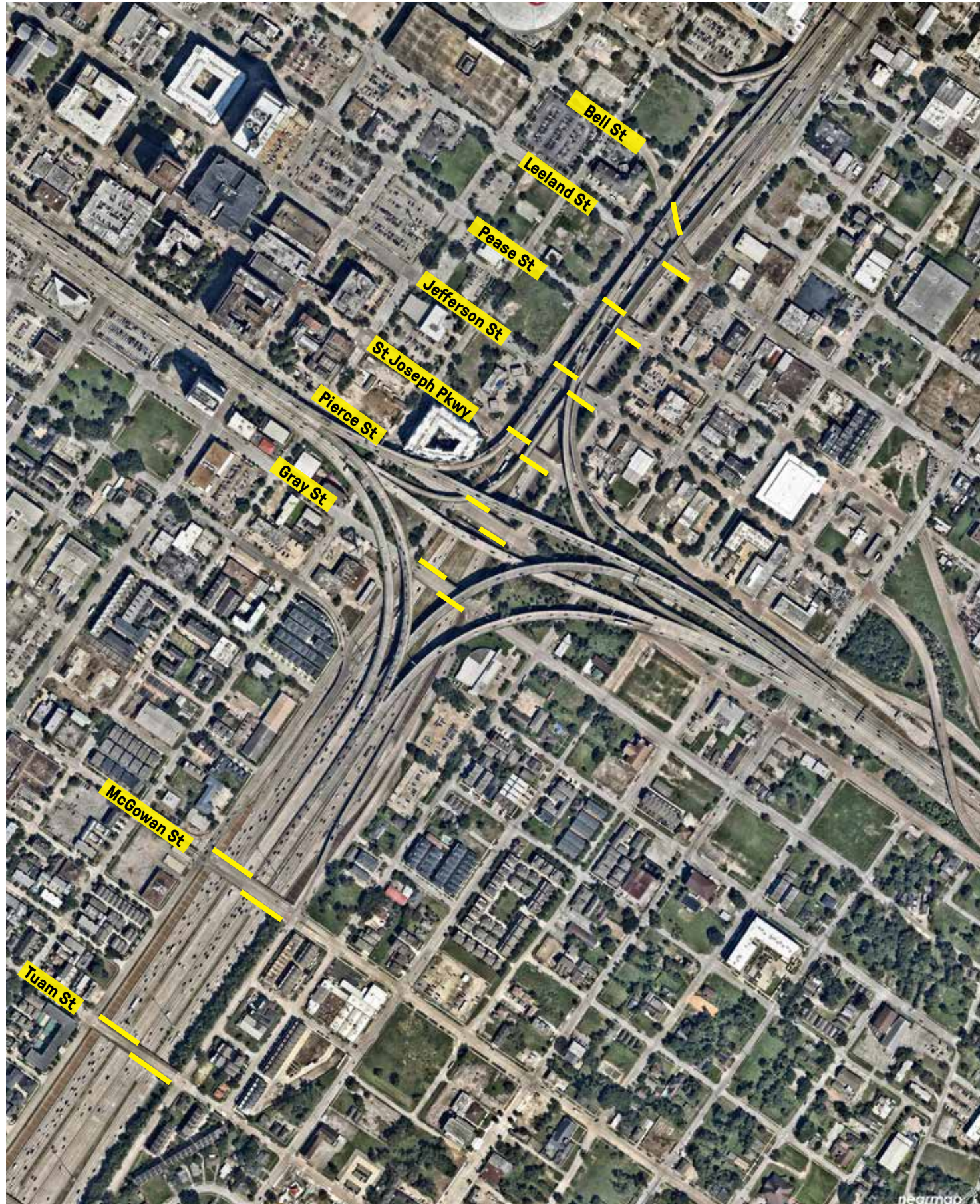


KEY PLAN



I59-169 DOWNTOWN CORRIDOR BRIDGE INSTALLATION CONCEPT DESIGN



| Issue
11/01/2016

| Rev
-

| Scale
-

| Project
HFOS602

| Drawing
CP_03_Bridge Installation Concept Design

INSTALLATION QUANTITIES SUMMARY

	LINEAR FEET OF FENCE (FIELD VERIFY)
Bell St.	125'
Leeland St.	110'
Pease St.	213.5'
Jefferson St.	207.5'
St. Joseph Pkwy.	210'
Pierce St.	235.5'
Gray St.	258.5'
McGowan St.	399'
Tuam St.	382'

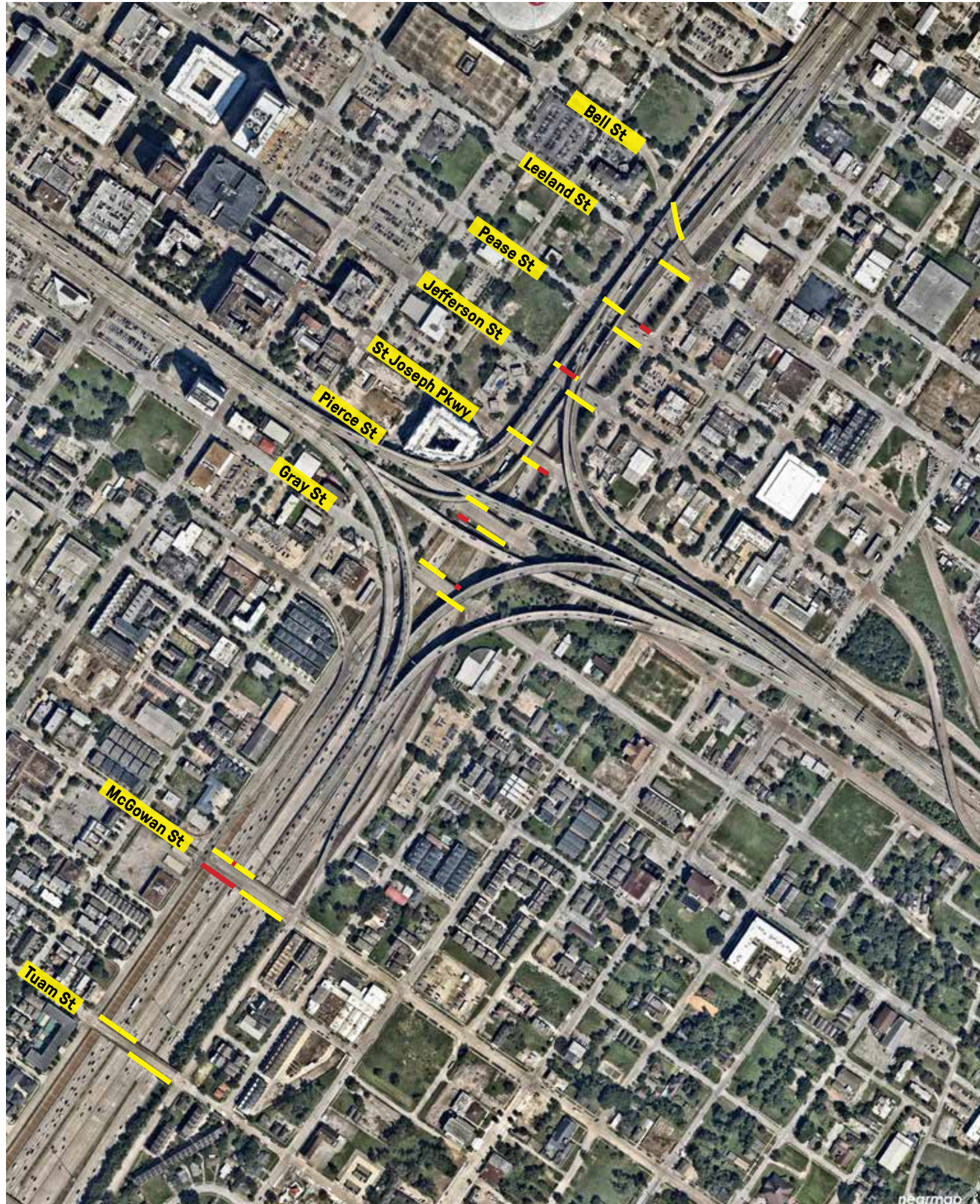
	GRAND TOTAL
nine bridges, half length of fence	2,141'

NOTE:

Provide material and installation unit cost for linear foot of fence.

According to preliminary calculations of air gaps, linear footage of printed slats is 27% lower than the overall linear footage of fence. Quantities to be field verified.

KEY PLAN



REPAIR QUANTITIES SUMMARY

	LINEAR FEET OF FENCE DAMAGE (FIELD VERIFY)	COMMENT	REMEDY
Bell St.	0'		
Leeland St.	0'		
Pease St.	6'	bent structural post deformed fabric	no action for base bid
Jefferson St.	20'	chain link fabric detached from top of frame	to be re-attached by contractor
St. Joseph Pkwy.	6'	bent post detached fabric	to be re-attached by contractor
Pierce St.	60'	chain link fence frame and fabric missing	no action for base bid
Gray St.	5'	bent structural post	no action for base bid
McGowan St.	200'	chain link fabric incorrectly installed precludes graphic slat installation	no action for base bid
McGowan St.	1,5'	small square cutout in chain link fabric	to be worked around by contractor

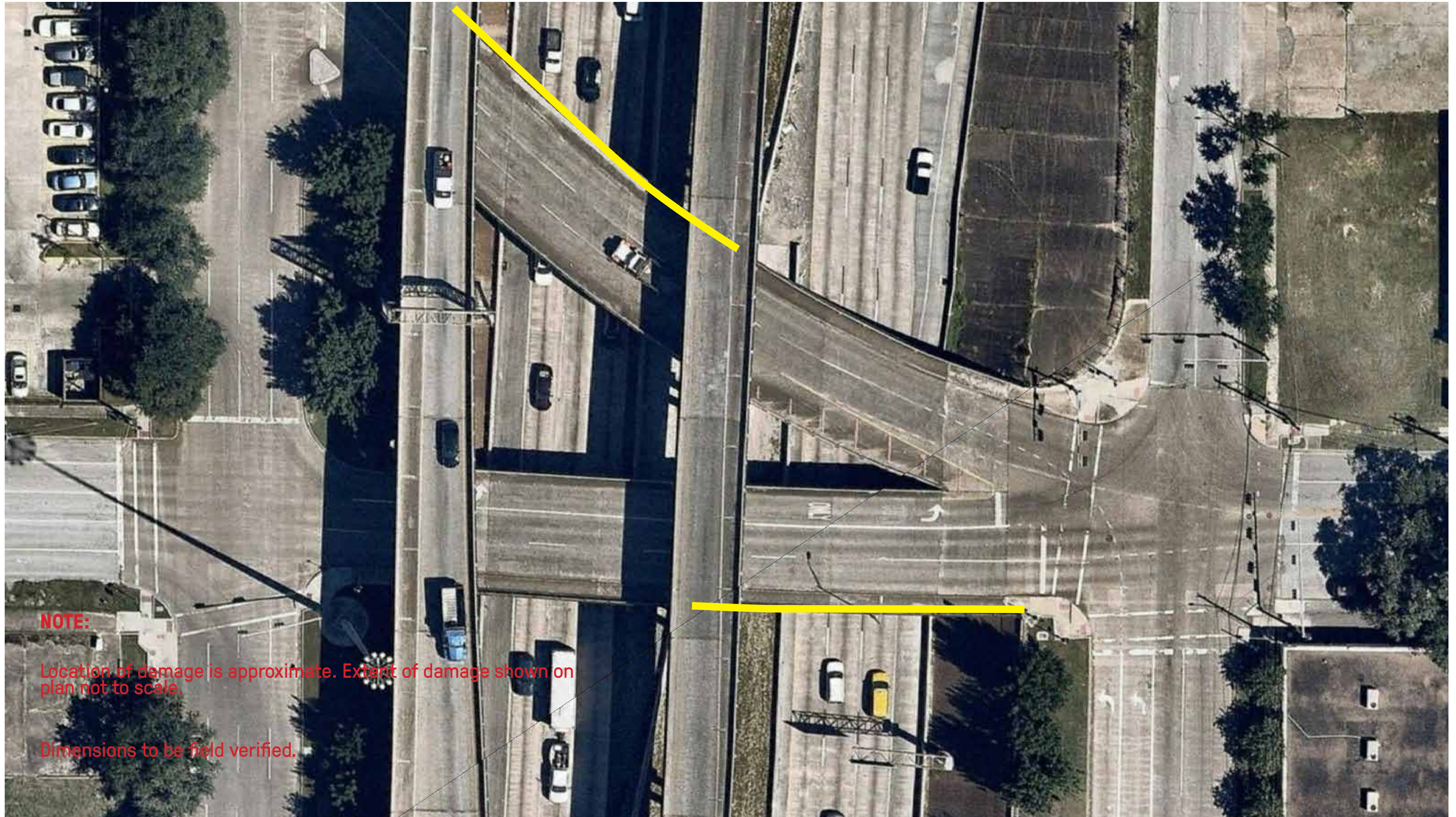
REPAIR BY CONTRACTOR	GRAND TOTAL
	26'

NOTE:

Location of damage is approximate. Extent of damage shown on plan not to scale.

Dimensions to be field verified.

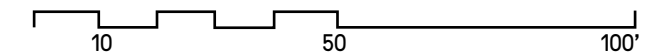
BELL ST - LEELAND ST

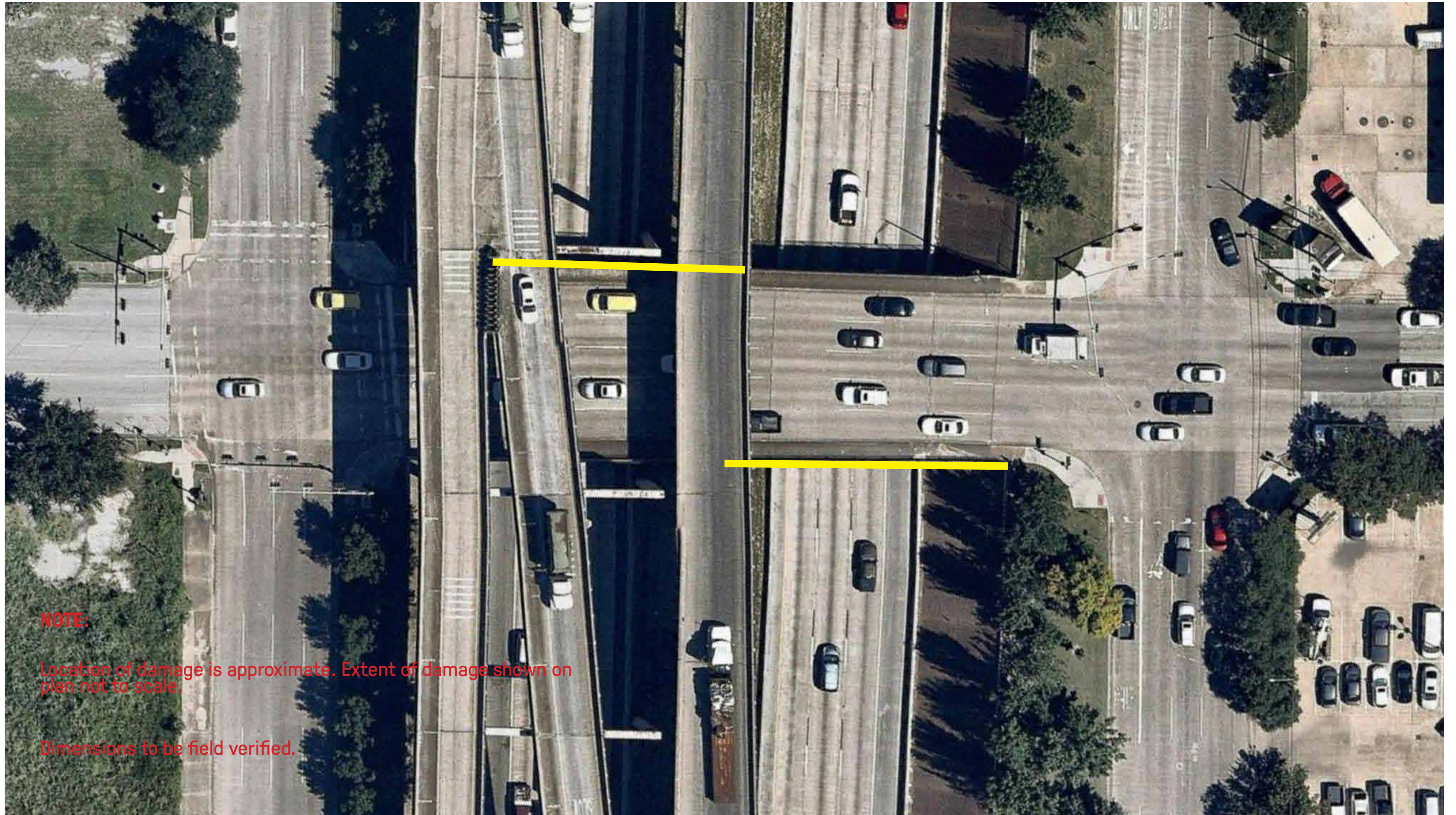


NOTE:

Location of damage is approximate. Extent of damage shown on plan not to scale.

Dimensions to be field verified.

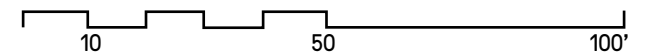


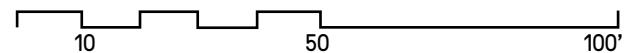
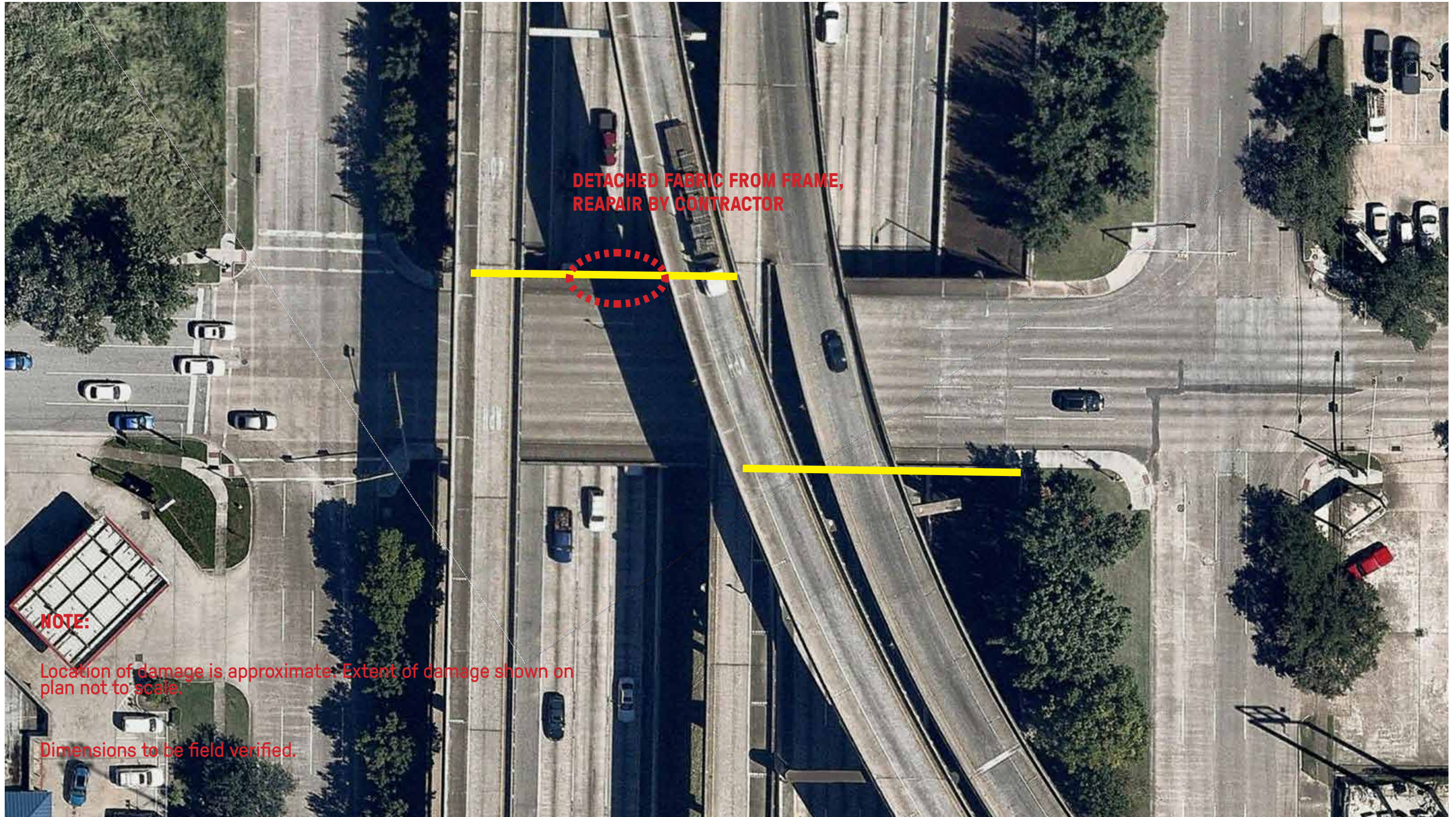


NOTE:

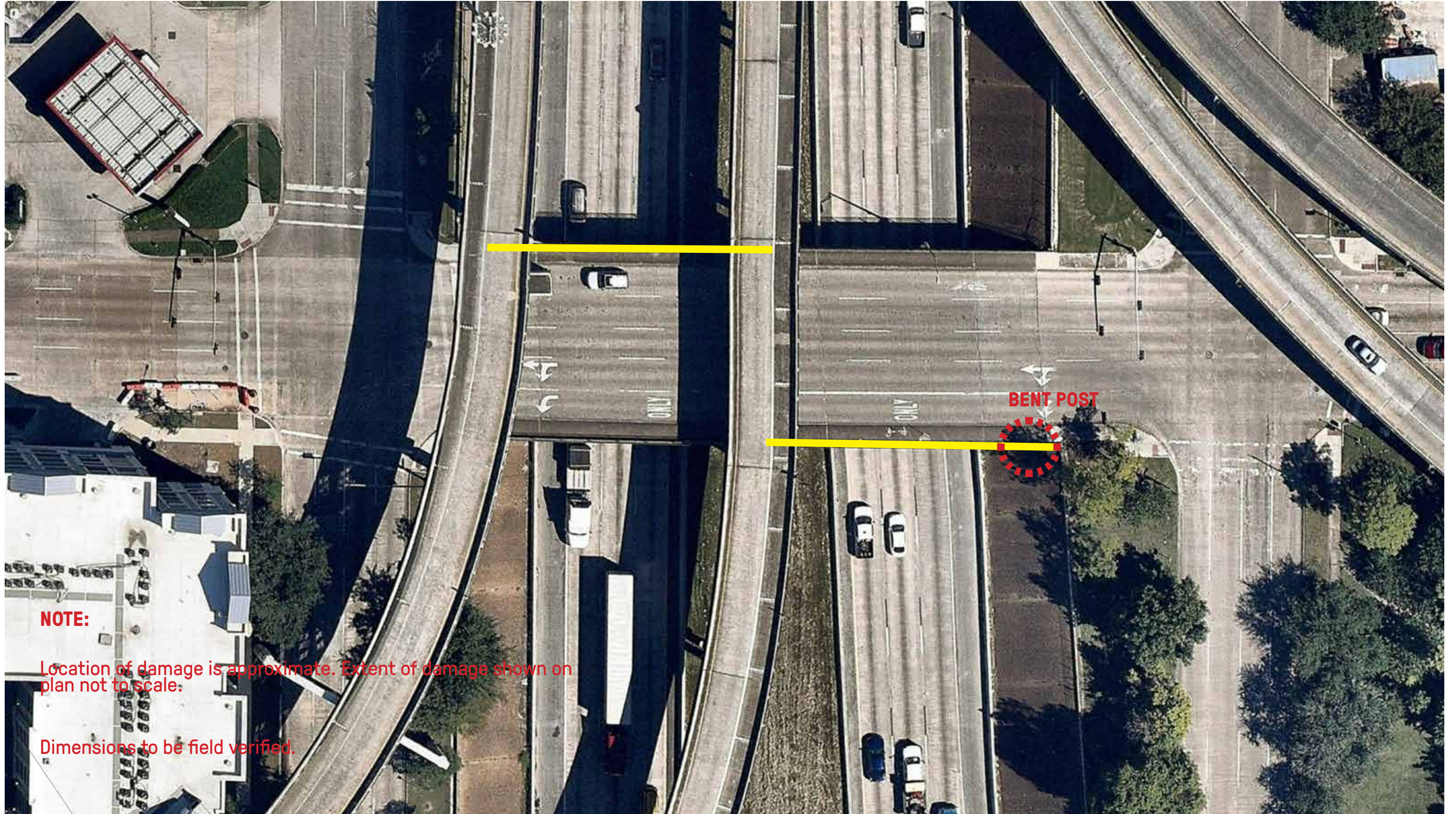
Location of damage is approximate. Extent of damage shown on plan not to scale.

Dimensions to be field verified.





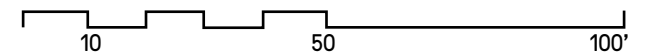
ST JOSEPH PKWY



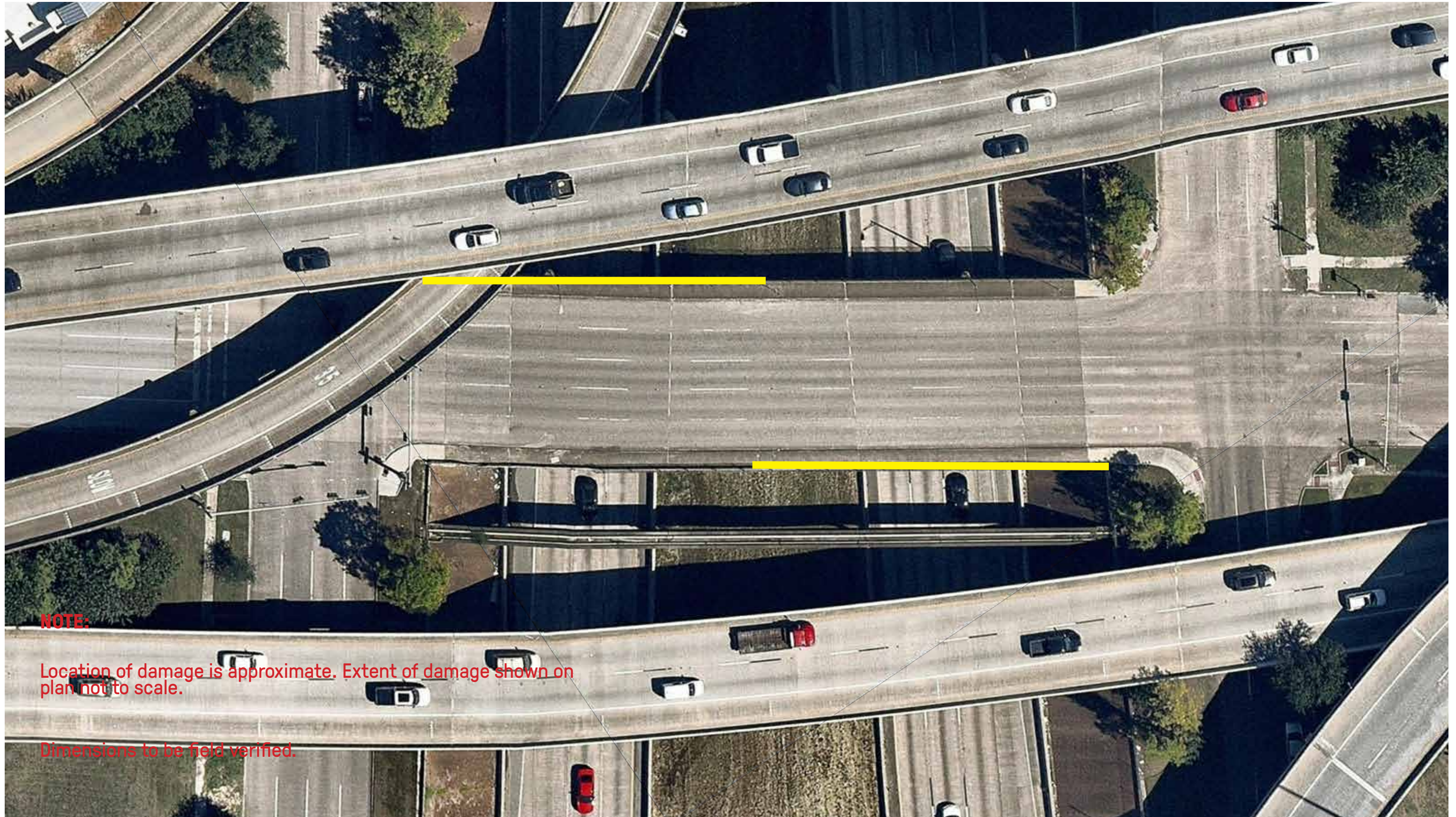
NOTE:

Location of damage is approximate. Extent of damage shown on plan not to scale.

Dimensions to be field verified.



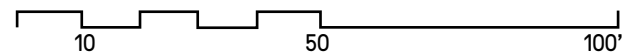
PIERCE ST

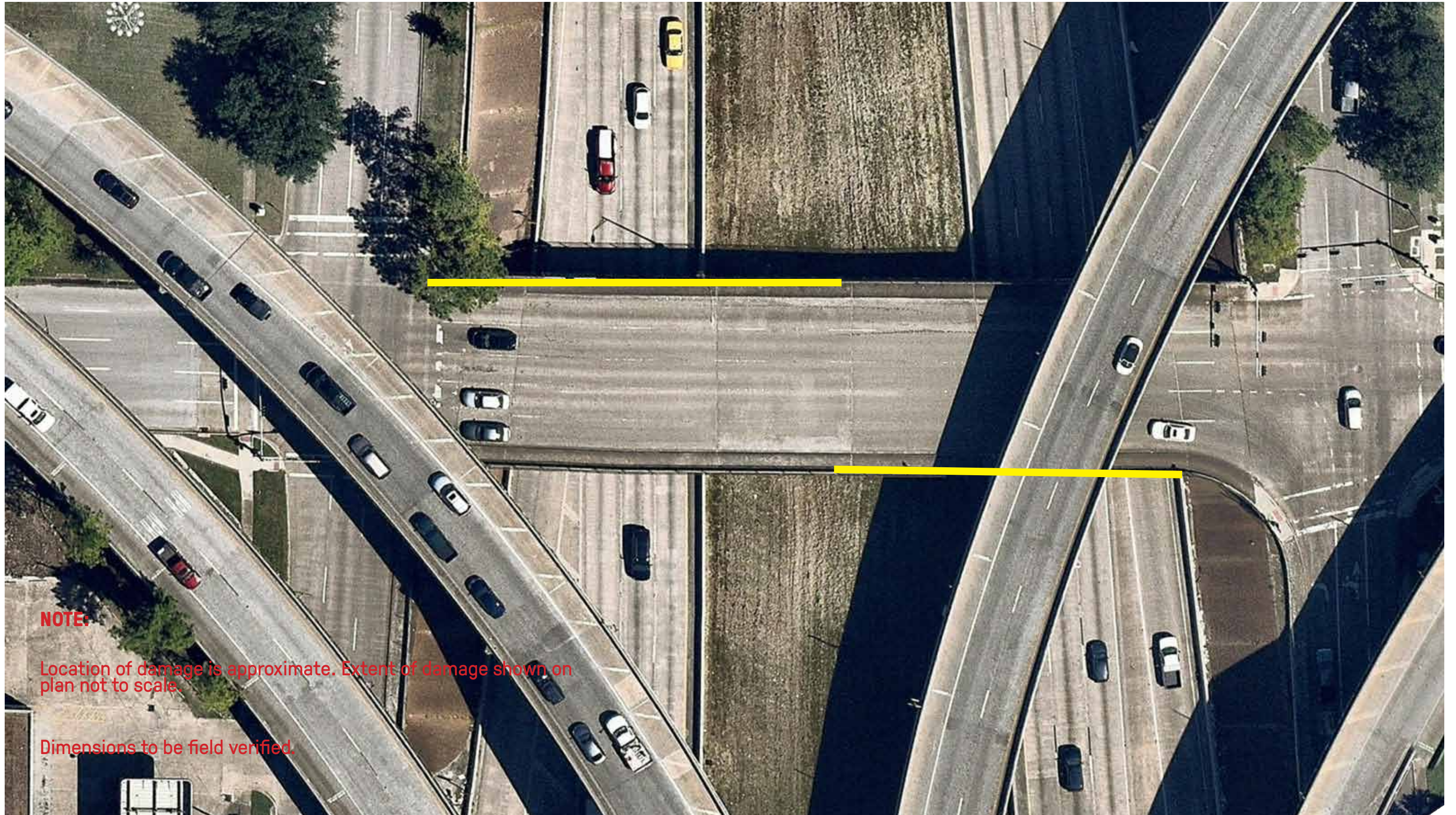


NOTE:

Location of damage is approximate. Extent of damage shown on plan not to scale.

Dimensions to be field verified.

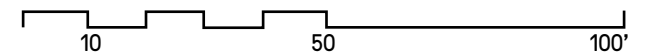


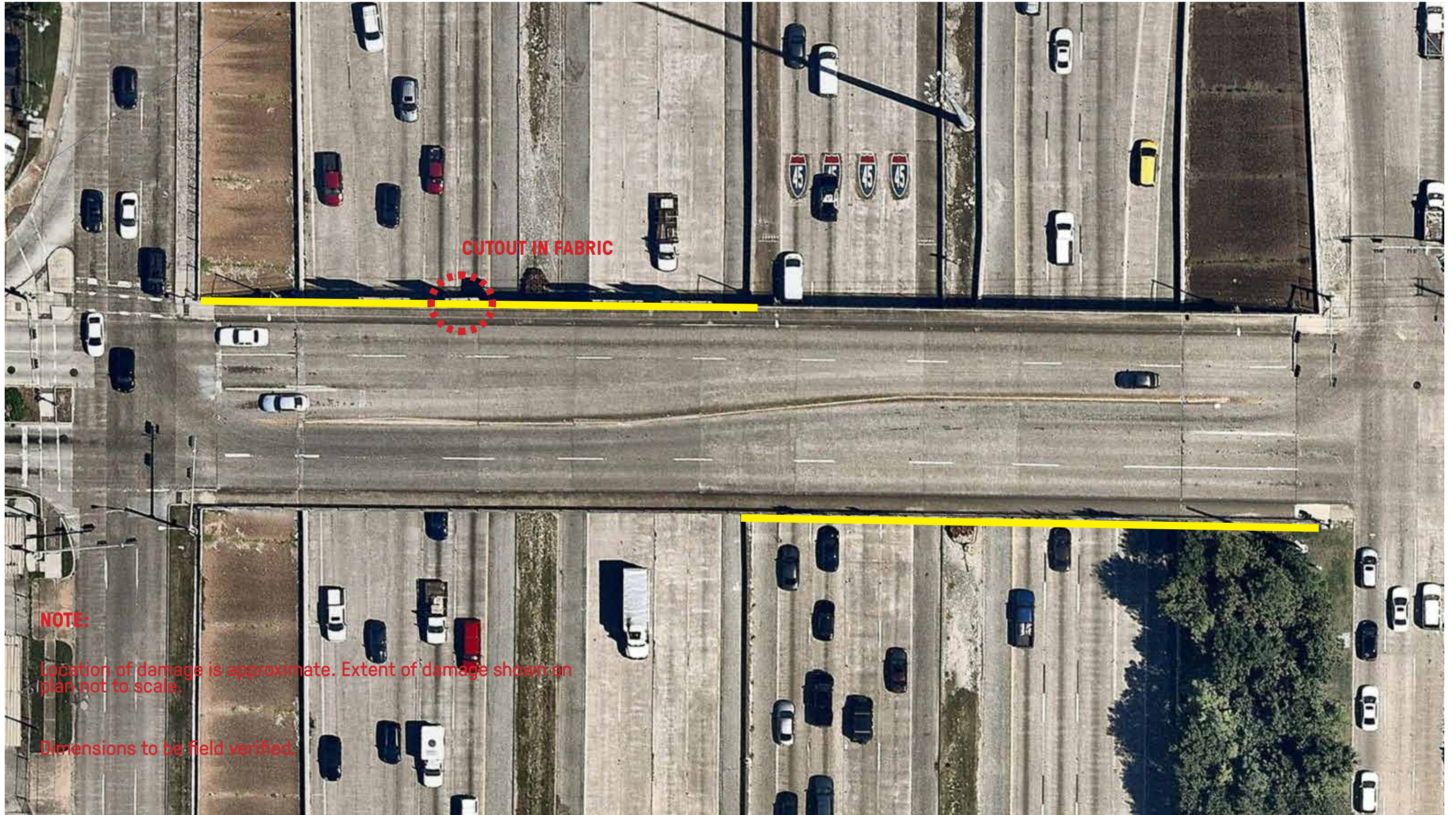


NOTE:

Location of damage is approximate. Extent of damage shown on plan not to scale.

Dimensions to be field verified.

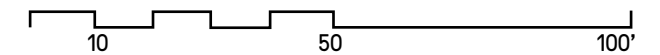




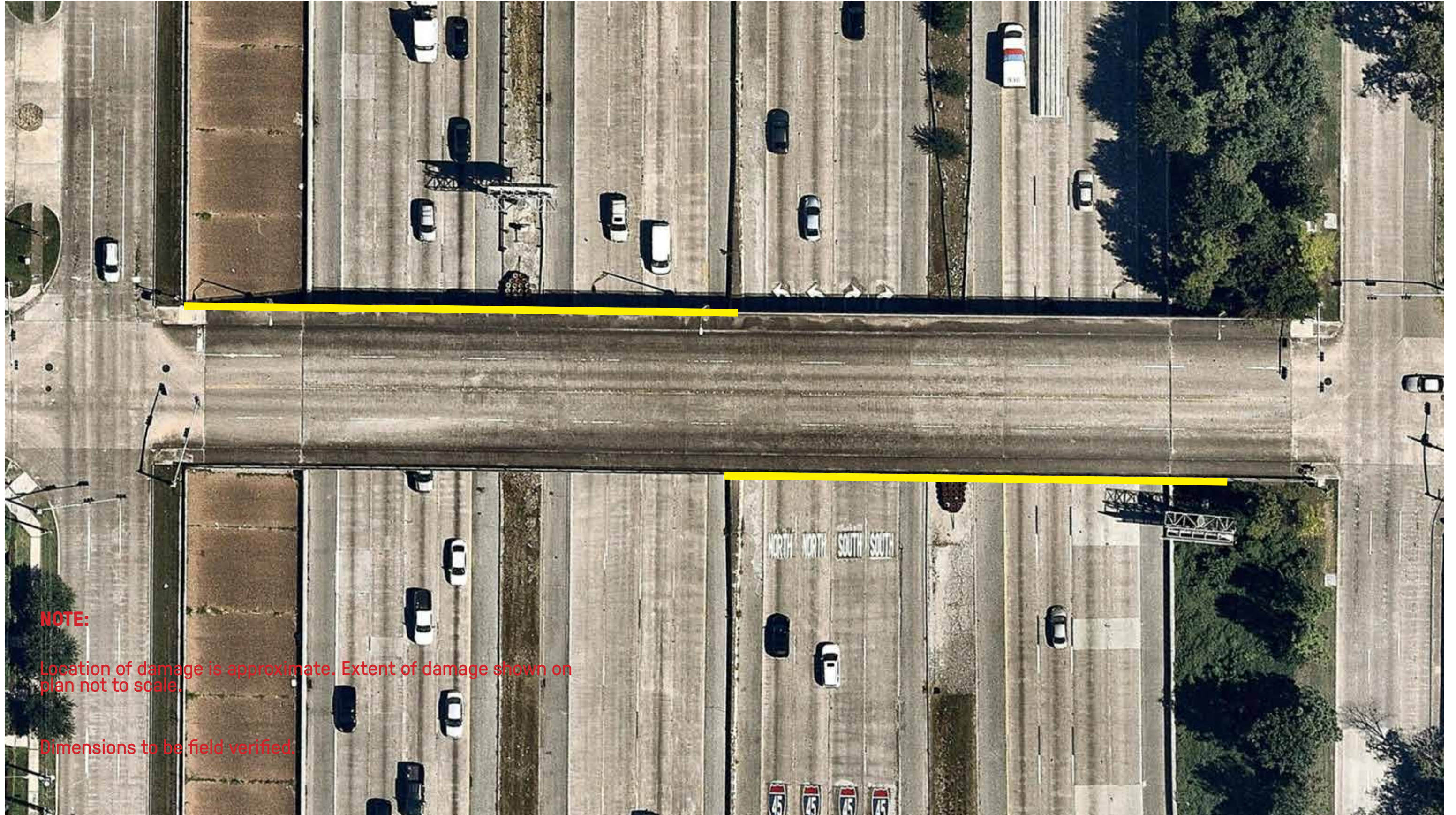
NOTE:

Location of damage is approximate. Extent of damage shown on plan not to scale.

Dimensions to be field verified.



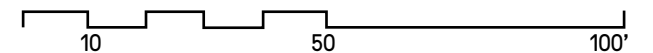
TUAM ST



NOTE:

Location of damage is approximate. Extent of damage shown on plan not to scale.

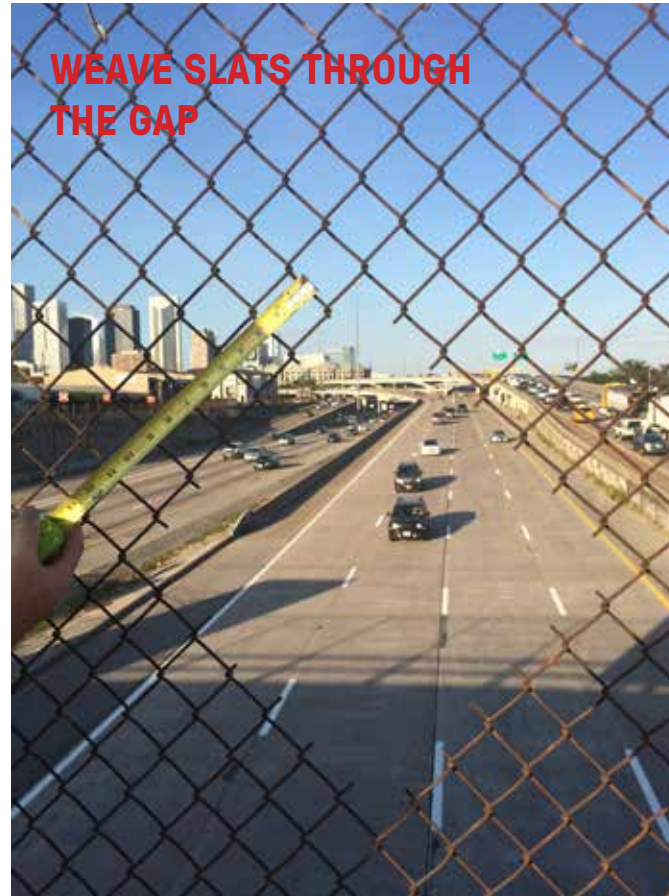
Dimensions to be field verified.



FENCE DAMAGE EXAMPLES TO WORK AROUND OR PROVIDE REPAIR



JEFFERSON ST.

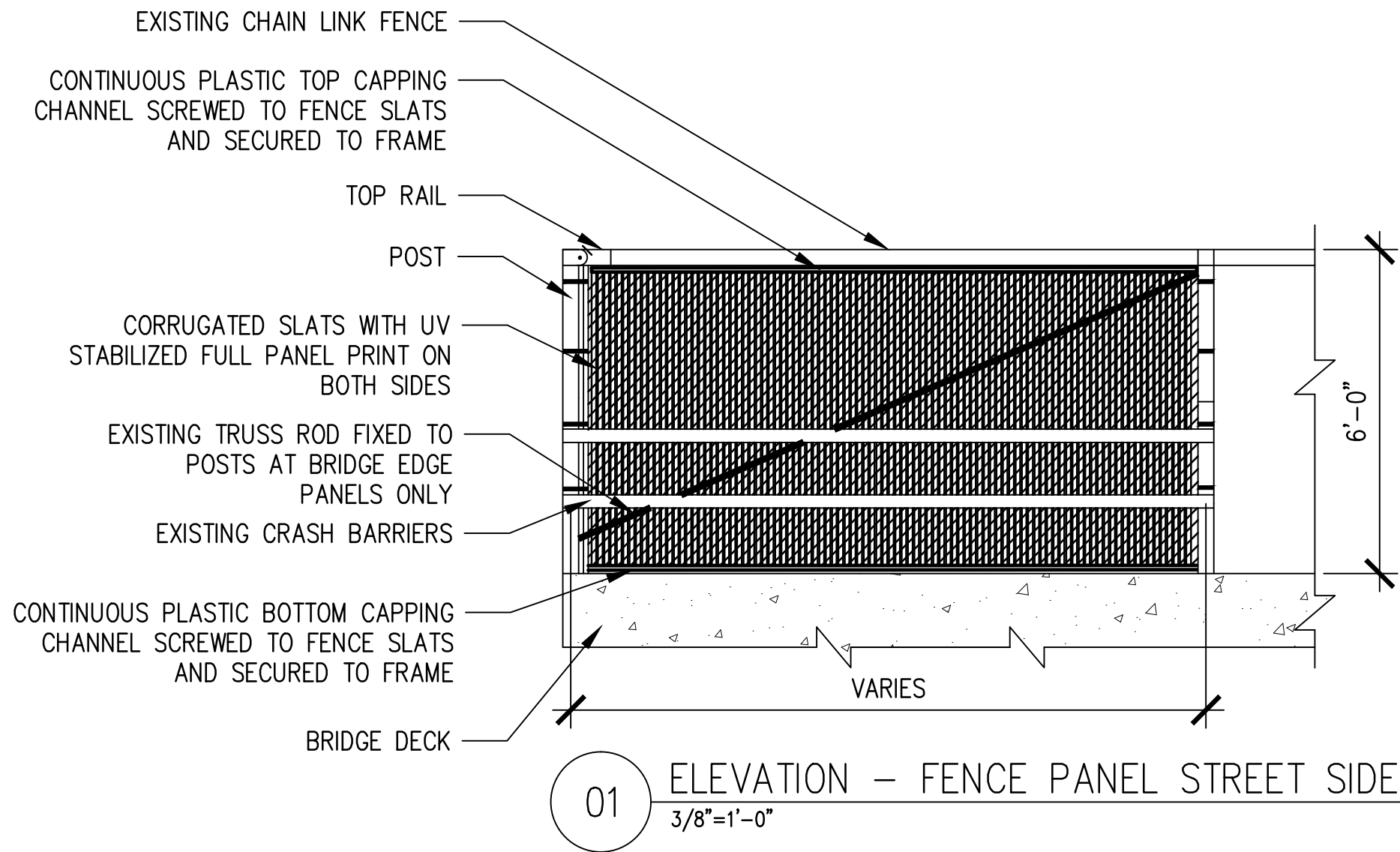


MCGOWAN ST.



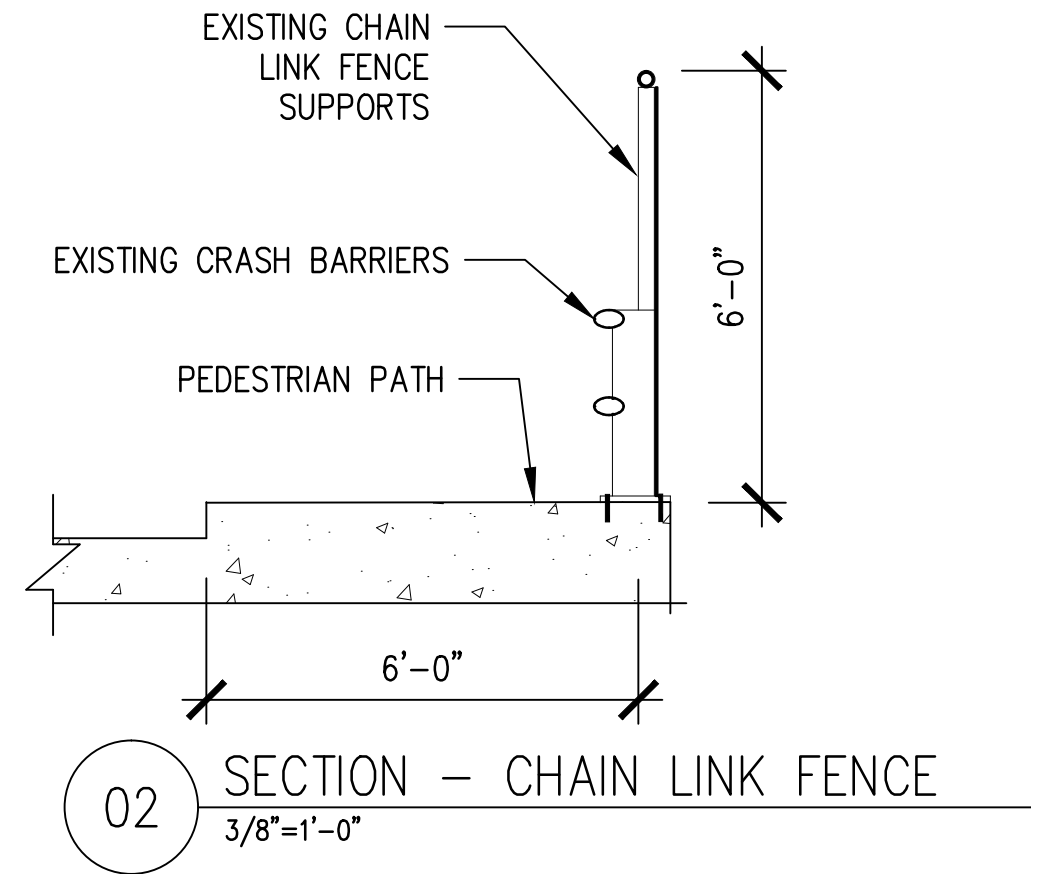
ST. JOSEPH ST.

TYPICAL DETAIL

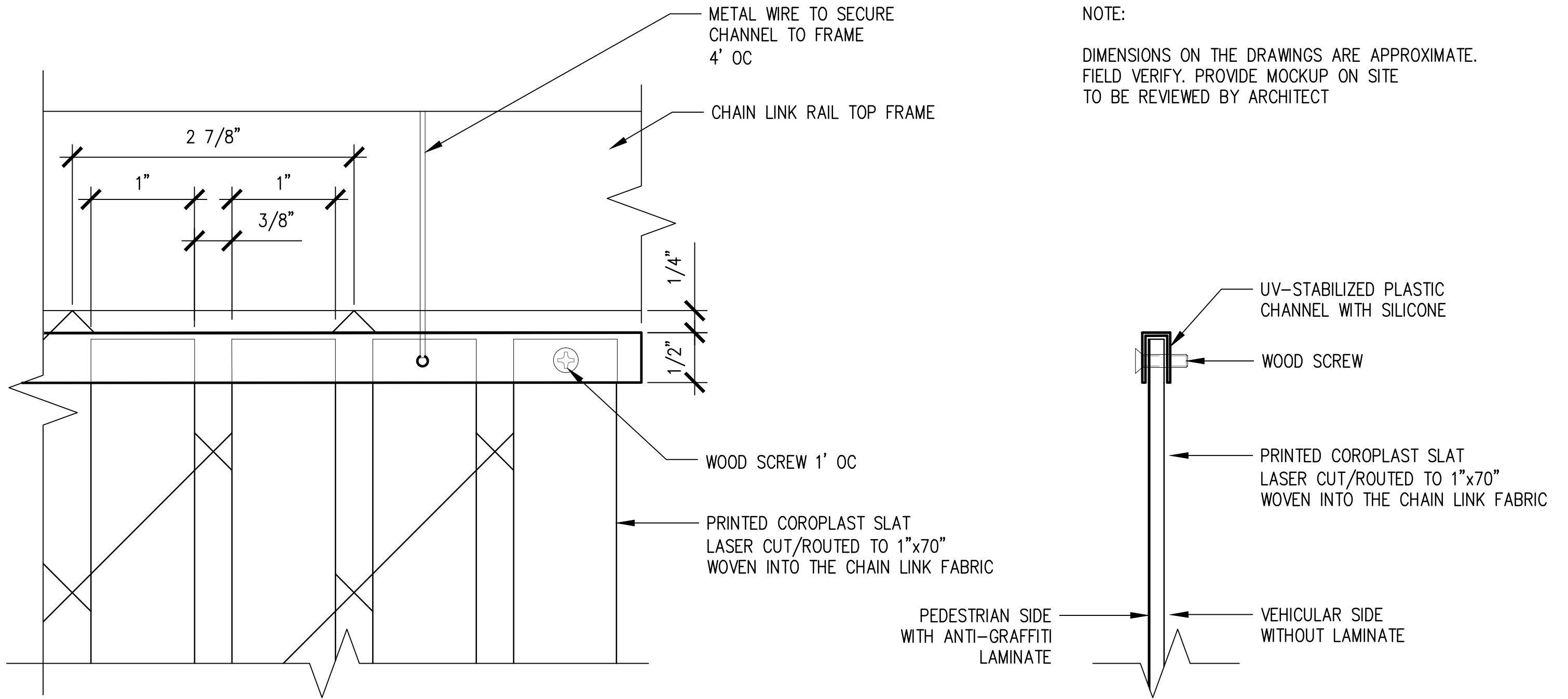


NOTE:

DIMENSIONS ON THE DRAWINGS ARE APPROXIMATE. FIELD VERIFY. CREATE A FULL SCALE MOCKUP ON SITE TO BE REVIEWED BY ARCHITECT



TYPICAL DETAIL



NOTE:
DIMENSIONS ON THE DRAWINGS ARE APPROXIMATE.
FIELD VERIFY. PROVIDE MOCKUP ON SITE
TO BE REVIEWED BY ARCHITECT

3 ELEVATION AND SECTION – FENCE ASSEMBLY DETAIL
1"=1"

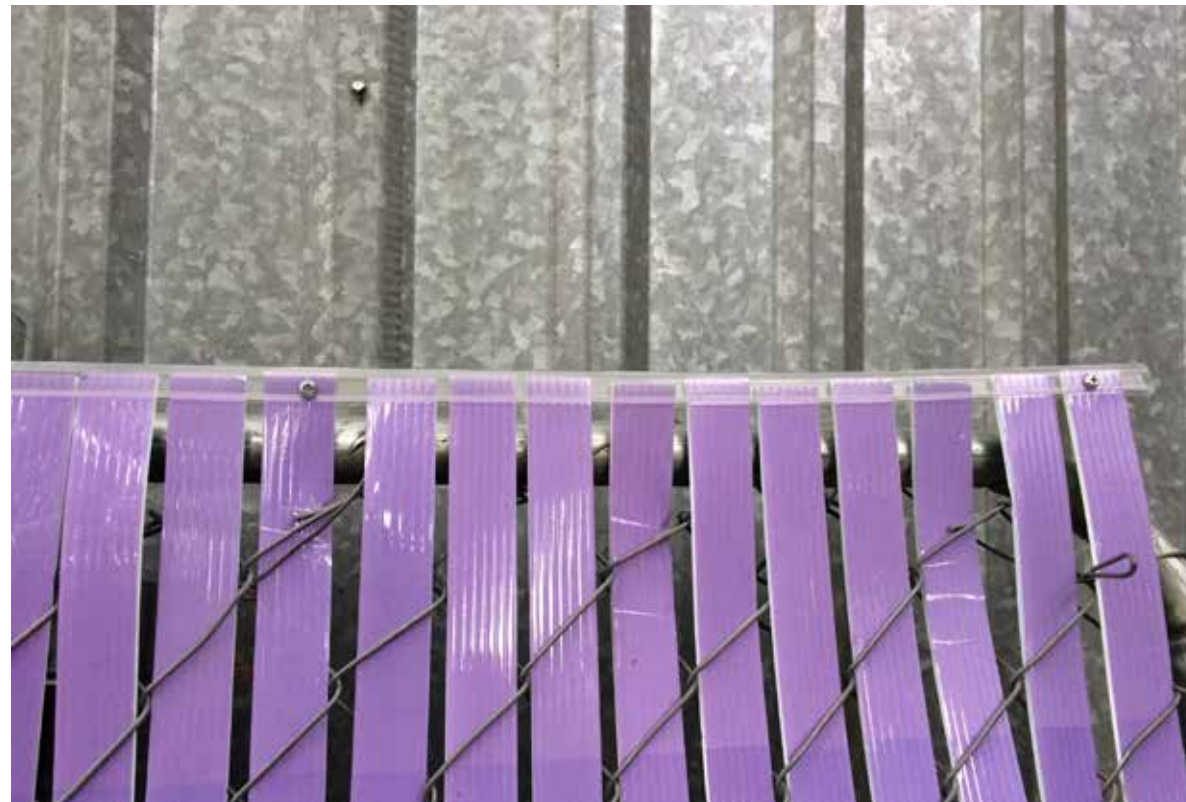
DIGITAL AND PHYSICAL MOCKUP



NOTE:

Mockup is a guideline, contractor is to follow specifications.

DIGITAL MOCKUP: VIEW OF THE INSTALLATION FROM FREEWAY BELOW



PHYSICAL MOCK-UP