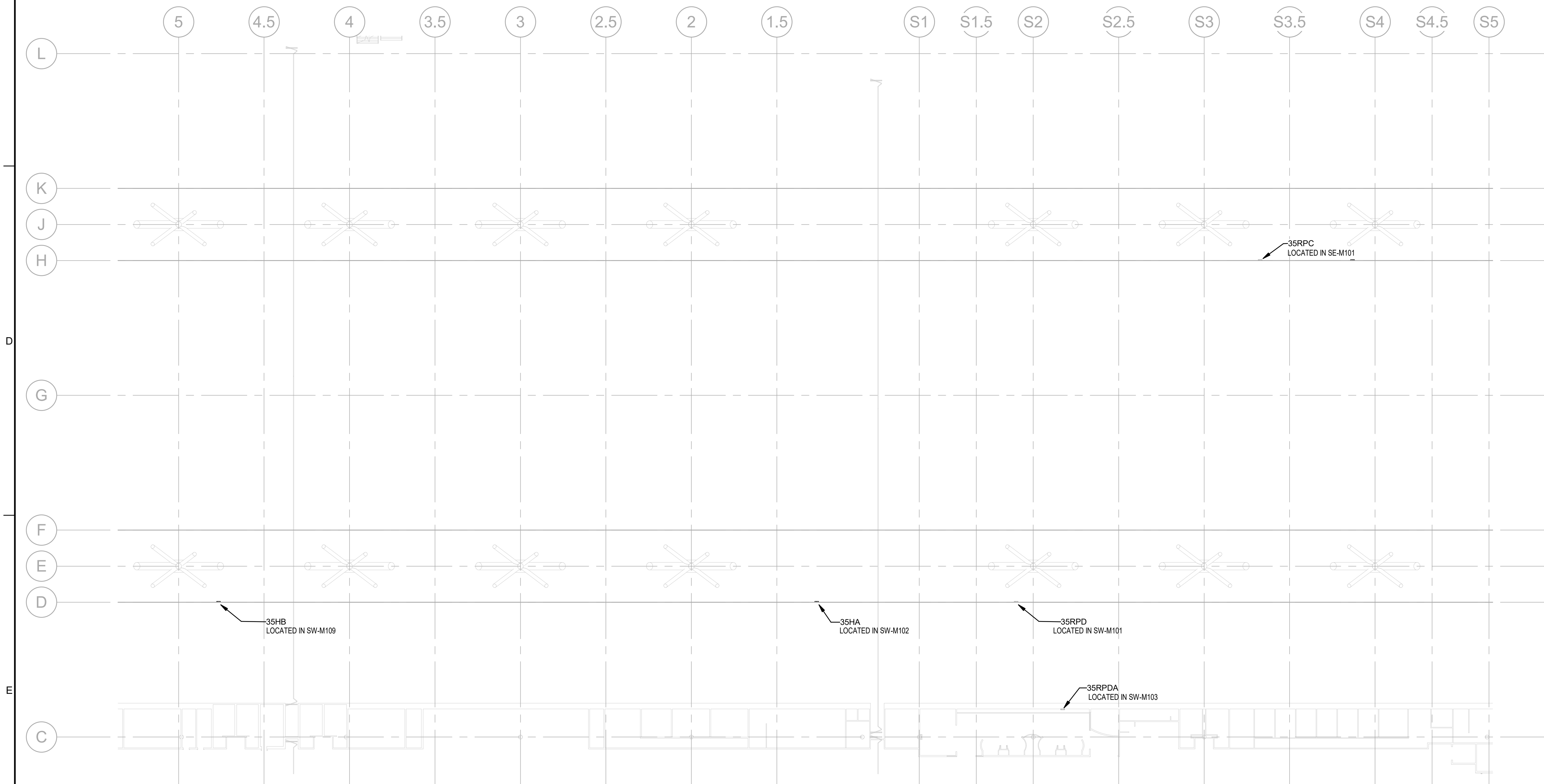


C1 ELECTRICAL LIGHTING PLAN - MECHANICAL LEVEL +35.96' - NORTH
1/32" = 1'-0"



E1 ELECTRICAL LIGHTING PLAN - MECHANICAL LEVEL +35.96' - SOUTH
1/32" = 1'-0"

GENERAL NOTES:
 A. REFER TO SHEET E001-P1 FOR ELECTRICAL ABBREVIATIONS, SYMBOLS, AND GENERAL NOTES.
 B. DRAWING INTENT IS TO SHOW APPROXIMATE LOCATION OF IDF ROOMS AND/OR RELAY PANELS AS IDENTIFIED BY CLIENT AND AS BUILT DRAWINGS. CONTRACTOR TO COORDINATE WORK SCHEDULE WITH GRBCC/ HOUSTON FIRST TO ENSURE NO EVENTS ARE INTERRUPTED.

Jacobs
 5985 ROGERDALE RD
 HOUSTON, TX 77072
 P: 281-721-8400
 www.Jacobs.com

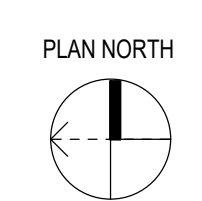
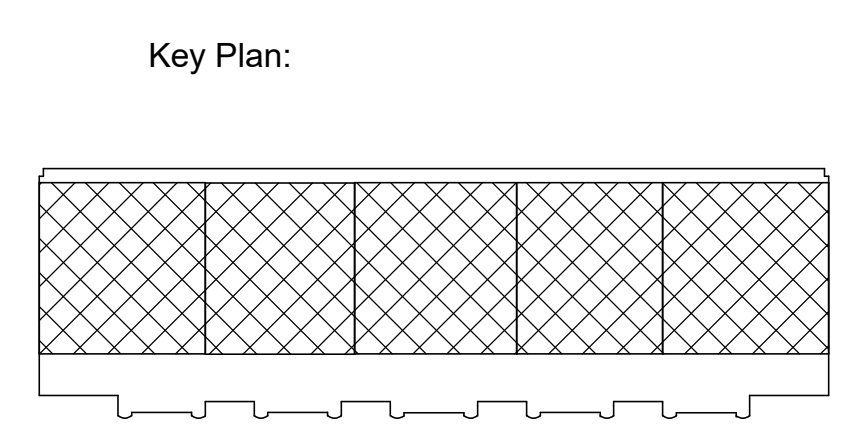
THESE DOCUMENTS ARE FOR INTERIM REVIEW AND NOT FOR PERMIT PURPOSES.
 RESPONSIBLE ENGINEER:
 STEPHANIE P. ELLIOTT, P.E.
 TEXAS P.E. LICENSE NO. 120037

03/03/2021
 Firm No. F-2966

DR	CHK	C/J/A	APVD	SPE
NO.	DATE	REVISION	BY	BY
1	03/03/2021	ISSUE FOR PROCUREMENT		



1001 AVENIDA DE LAS AMERICAS
 HOUSTON, TX 77010
 (713) 853-8000



Project Title:
GRBCC LIGHTING CONTROLS
 Drawing Title:
ELECTRICAL LIGHTING PLAN - MECHANICAL LEVEL +35.96'

Date: 06/01/2020
 Proj. No.: WHXK6604
 Drawing No.: E203.1-P1

GENERAL NOTES:

- A. REFER TO SHEET E001-P1 FOR ELECTRICAL ABBREVIATIONS, SYMBOLS, AND GENERAL NOTES.
- B. DRAWING INTENT IS TO SHOW APPROXIMATE LOCATION OF IDF ROOMS AND/OR RELAY PANELS AS IDENTIFIED BY CLIENT AND AS BUILT DRAWINGS. CONTRACTOR TO COORDINATE WORK SCHEDULE WITH GRBCC/ HOUSTON FIRST TO ENSURE NO EVENTS ARE INTERRUPTED.

THESE DOCUMENTS ARE FOR INTERIM REVIEW AND NOT FOR PERMIT PURPOSES.
RESPONSIBLE ENGINEER:
STEPHANIE P. ELLIOTT, P.E.
TEXAS P.E. LICENSE NO. 120037

03/03/2021
Firm No. F-2966

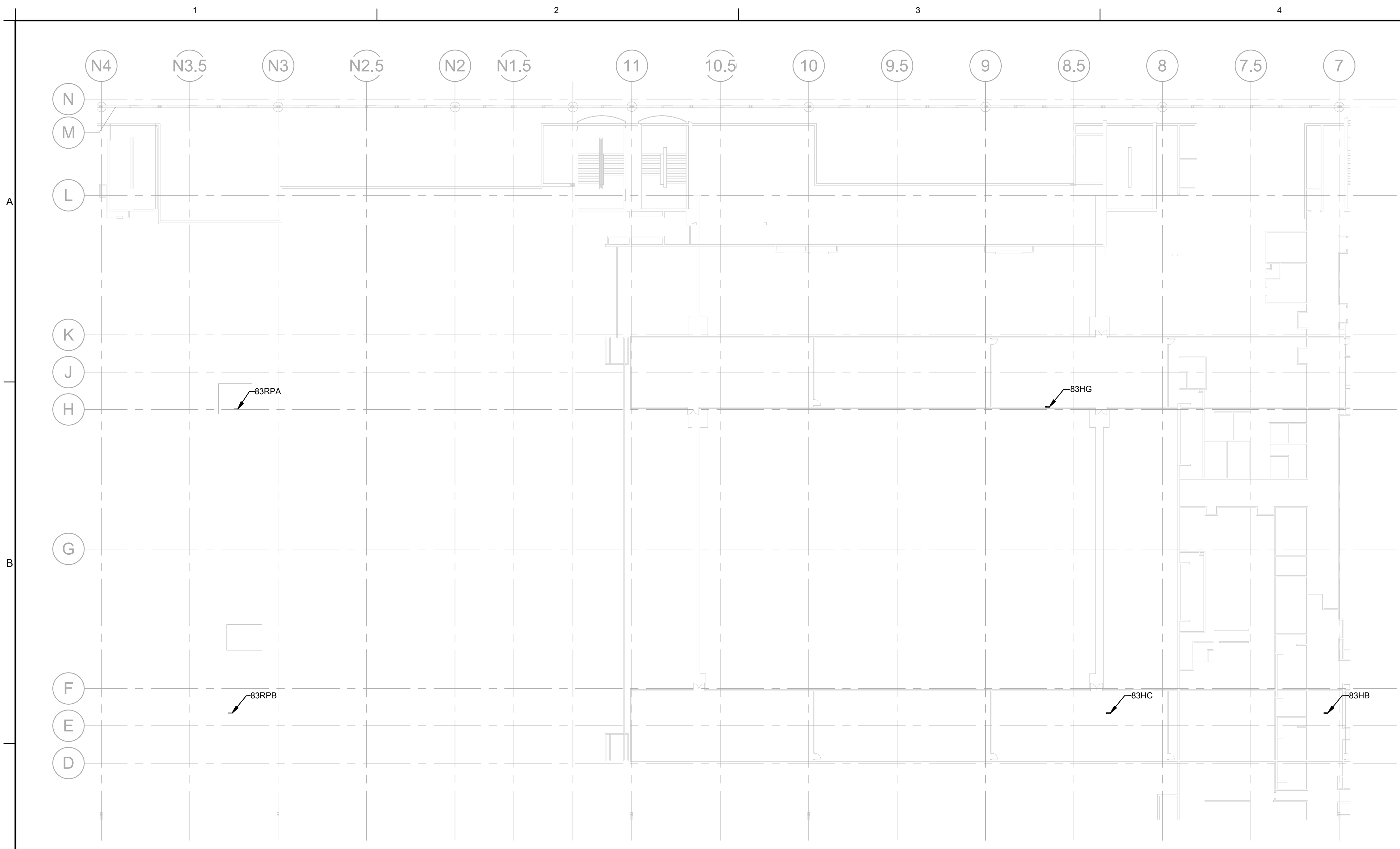
DSCR	NO.	DATE	C/A	DR	CHK	ML	REVISION	APVD	
								BY	DATE



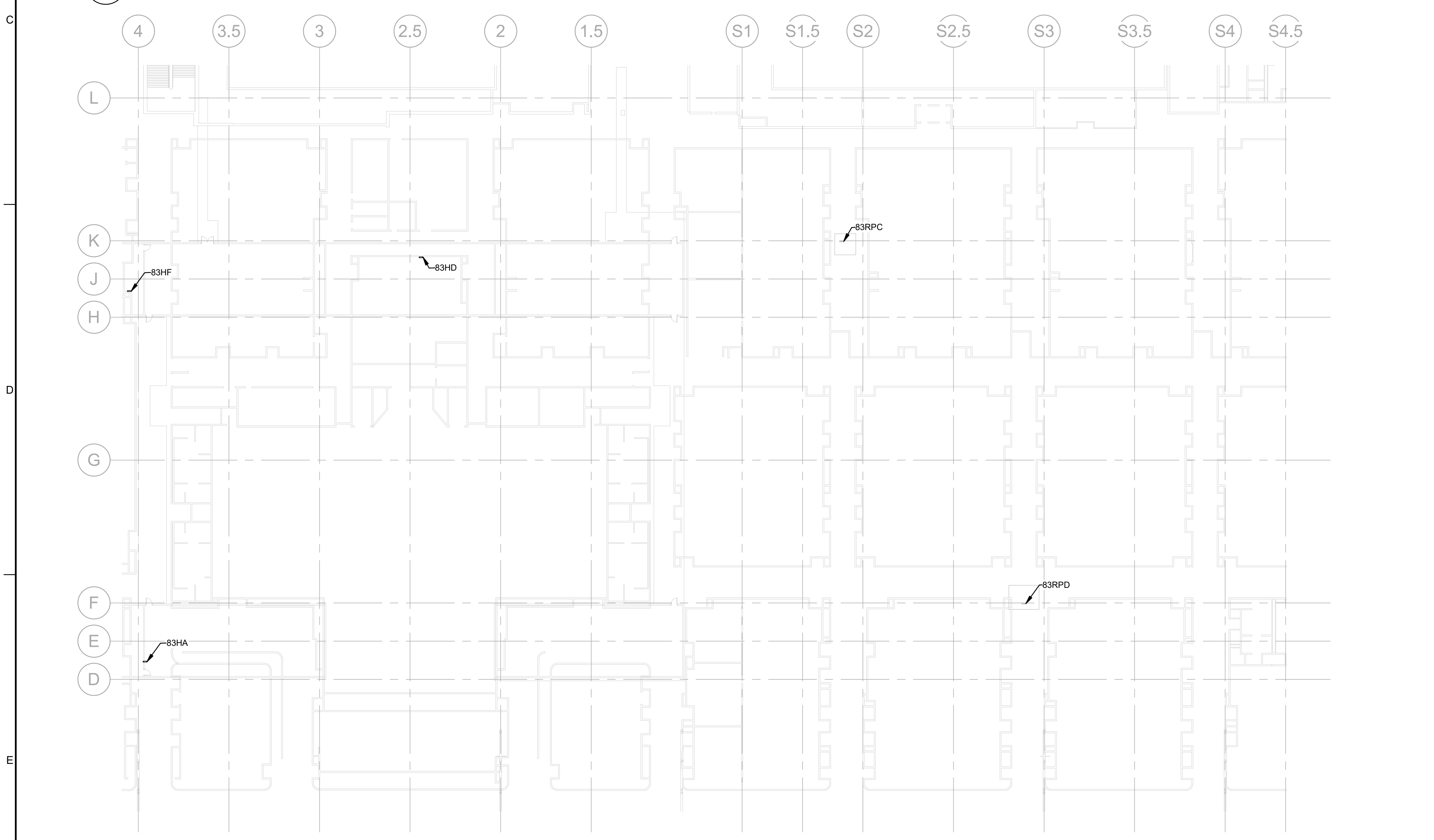
1001 AVENIDA DE LAS AMERICAS
HOUSTON, TX 77010
(713) 853-8000

Project Title: GRBCC LIGHTING CONTROLS
Drawing Title: ELECTRICAL LIGHTING PLAN - MECHANICAL LEVEL +83.05

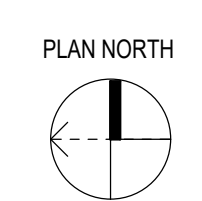
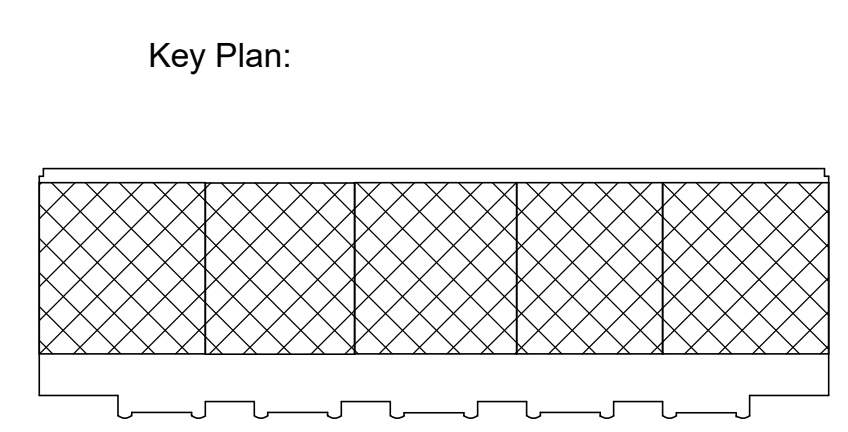
Date: 06/01/2020
Proj. No.: WHXK6604
Drawing No.: E205.1-P1



C1 ELECTRICAL LIGHTING PLAN - MECHANICAL LEVEL +83.05 - NORTH
1/32" = 1'-0"



E1 ELECTRICAL LIGHTING PLAN - MECHANICAL LEVEL +83.05 - SOUTH
1/32" = 1'-0"



GENERAL NOTES:

- A. REFER TO SHEET E001-P1 FOR ELECTRICAL ABBREVIATIONS, SYMBOLS, AND GENERAL NOTES.
- B. DRAWING INTENT IS TO SHOW APPROXIMATE LOCATION OF IDF ROOMS AND/OR RELAY PANELS AS IDENTIFIED BY CLIENT AND AS BUILT DRAWINGS. CONTRACTOR TO COORDINATE WORK SCHEDULE WITH GRBCC/HOUSTON FIRST TO ENSURE NO EVENTS ARE INTERRUPTED.
- C. RELAY PANEL SCHEDULES ARE POPULATED WITH THE AS-BUILT INFORMATION. ENGINEER HAS MADE A GOOD FAITH EFFORT TO CAPTURE ALL OF THE KNOWN RELAY CIRCUITS. CONTRACTOR TO FIELD VERIFY IF THERE ARE ANY MODIFICATIONS NOT CAPTURED ON AS-BUILTS. ALL RELAY CIRCUITS CURRENTLY SERVED BY EXISTING LIGHTING CONTROL SYSTEM TO BE MIGRATED TO NEW LIGHTING CONTROLS SYSTEMS REGARDLESS IF THEY HAVE BEEN CAPTURED ON THESE SCHEDULES.

Jacobs

5985 ROGERDALE RD
HOUSTON, TX 77072
P. 281-721-8400
www.Jacobs.com

© Jacobs 2019. ALL RIGHTS RESERVED.

Panel ID	Description	Location	Type	Interior/Enclosure	Power Supply	Circuit	
1	Panel PHA - Central Plant (Was MODs 2 & 3)	Sub Basement	32/32	Surface	115/277		
Rly	Circuit	Description	LV Switch	Rly	Circuit	Description	LV Switch
17	PHA-8	Mod -3 relay 1		1	12HB-1	Tunnel - Hall C (Old 4-1)	
18	PHA-#1,3	Mod -3 relay 2		2	12HB-2	Tunnel - Hall C (Old 6-2)	
19		Mod -3 relay 3		3	12HB-3	Tunnel - Hall C (Old 6-3)	
20		Mod -3 relay 4		4	12HB-4	Tunnel - Hall C (Old 6-4)	
21		Mod -3 relay 5		5	12HB-5	Restrooms - Tunnel C (Old 6-5)	
22		Mod -3 relay 6		6	12HB-6	Mod -6 relay 7	
23		Mod -3 relay 7		7	12HB-7	Mod -6 relay 8	
24		Mod -3 relay 8		8	12HB-8	Mod -6 relay 9	
25		Mod -3 relay 9		9	12HB-9	Mod -6 relay 10	
26		Mod -3 relay 10		10	12HB-10	Mod -6 relay 11	
27		Mod -3 relay 11		11	12HB-11	Mod -6 relay 12	
28		Mod -3 relay 12		12	12HB-12	Mod -6 relay 13	
29		Mod -3 relay 13		13	12HB-13	Mod -6 relay 14	
30		Mod -3 relay 14		14	12HB-14	Mod -6 relay 15	
31	**Space**	Mod -3 relay 15		15	12HB-15	Mod -6 relay 16	
32	**Space**	Mod -3 relay 16		16	12HB-16		
Input	Type	Description	Input	Type	Description	Input	Type
9	**Space**		1			2	
10	**Space**		3			4	
11	**Space**		5			6	
12	**Space**		7			8	
13	**Space**						
14	**Space**						
15	**Space**						
16	**Space**						

Panel ID	Description	Location	Type	Interior/Enclosure	Power Supply	Circuit	
2	Panel 12HA - D Tunnel East (Was MOD 4)	Basement Rm 050 Tunnel East /5 end	32/32	Surface	115/277		
Rly	Circuit	Description	LV Switch	Rly	Circuit	Description	LV Switch
17	**Space**	Space		1	12HA-1	D Tunnel (Old 4/1)	
18	**Space**	Space		2	12HA-2	D Tunnel (Old 4/2)	
19	**Space**	Space		3	12HA-3	D Tunnel (Old 4/3)	
20	**Space**	Space		4	12HA-4	D Tunnel (Old 4/4)	
21	**Space**	Space		5	12HA-5	D Tunnel (Old 4/5)	
22	**Space**	Space		6	12HA-6	D Tunnel (Old 4/6)	
23	**Space**	Space		7	12HA-7	Mod -4 relay 7	
24	**Space**	Space		8	12HA-8	Mod -4 relay 8	
25	**Space**	Space		9	12HA-9	Mod -4 relay 9	
26	**Space**	Space		10	12HA-10	Mod -4 relay 10	
27	**Space**	Space		11	12HA-11	Mod -4 relay 11	
28	**Space**	Space		12	12HA-12	Mod -4 relay 12	
29	**Space**	Space		13	12HA-13	Mod -4 relay 13	
30	**Space**	Space		14	12HA-14	Mod -4 relay 14	
31	**Space**	Space		15	12HA-15	Mod -4 relay 15	
32	**Space**	Space		16	12HA-16	Mod -4 relay 16	
Input	Type	Description	Input	Type	Description	Input	Type
9	**Space**		1			2	
10	**Space**		3			4	
11	**Space**		5			6	
12	**Space**		7			8	
13	**Space**						
14	**Space**						
15	**Space**						
16	**Space**						

Panel ID	Description	Location	Type	Interior/Enclosure	Power Supply	Circuit	
3	Panel 12HB - C Tunnel East (Was MOD 6)	Basement Rm 048 Tunnel East Middle	32/32	Surface	115/277		
Rly	Circuit	Description	LV Switch	Rly	Circuit	Description	LV Switch
17	**Space**	Space		1	12HB-1	Tunnel - Hall C (Old 4-1)	
18	**Space**	Space		2	12HB-2	Tunnel - Hall C (Old 6-2)	
19	**Space**	Space		3	12HB-3	Tunnel - Hall C (Old 6-3)	
20	**Space**	Space		4	12HB-4	Tunnel - Hall C (Old 6-4)	
21	**Space**	Space		5	12HB-5	Restrooms - Tunnel C (Old 6-5)	
22	**Space**	Space		6	12HB-6	Mod -6 relay 7	
23	**Space**	Space		7	12HB-7	Mod -6 relay 8	
24	**Space**	Space		8	12HB-8	Mod -6 relay 9	
25	**Space**	Space		9	12HB-9	Mod -6 relay 10	
26	**Space**	Space		10	12HB-10	Mod -6 relay 11	
27	**Space**	Space		11	12HB-11	Mod -6 relay 12	
28	**Space**	Space		12	12HB-12	Mod -6 relay 13	
29	**Space**	Space		13	12HB-13	Mod -6 relay 14	
30	**Space**	Space		14	12HB-14	Mod -6 relay 15	
31	**Space**	Space		15	12HB-15	Mod -6 relay 16	
32	**Space**	Space		16	12HB-16		
Input	Type	Description	Input	Type	Description	Input	Type
9	**Space**		1			2	
10	**Space**		3			4	
11	**Space**		5			6	
12	**Space**		7			8	
13	**Space**						
14	**Space**						
15	**Space**						
16	**Space**						

Panel ID	Description	Location	Type	Interior/Enclosure	Power Supply	Circuit	
4	Panel 12HC - B Tunnel East (Was MOD 8)	Basement Rm 042 Tunnel East Mid Bldg	32/32	Surface	115/277		
Rly	Circuit	Description	LV Switch	Rly	Circuit	Description	LV Switch
17	**Space**	Space		1	12HC-1	Tunnel - Hall B (Old 8-1)	
18	**Space**	Space		2	12HC-2	Tunnel - Hall B (Old 8-2)	
19	**Space**	Space		3	12HC-3	Tunnel - Hall B (Old 8-3)	
20	**Space**	Space		4	12HC-4	Tunnel - Hall B (Old 8-4)	
21	**Space**	Space		5	12HC-5	Restrooms - Tunnel B (Old 8-5)	
22	**Space**	Space		6	12HC-6	Mod -8 relay 6	
23	**Space**	Space		7	12HC-7	Mod -8 relay 7	
24	**Space**	Space		8	12HC-8	Mod -8 relay 8	
25	**Space**	Space		9	12HC-9	Mod -8 relay 9	
26	**Space**	Space		10	12HC-10	Mod -8 relay 10	
27	**Space**	Space		11	12HC-11	Mod -8 relay 11	
28	**Space**	Space		12	12HC-12	Mod -8 relay 12	
29	**Space**	Space		13	12HC-13	Mod -8 relay 13	
30	**Space**	Space		14	12HC-14	Mod -8 relay 14	
31	**Space**	Space		15	12HC-15	Mod -8 relay 15	
32	**Space**	Space		16	12HC-16	Mod -8 relay 16	
Input	Type	Description	Input	Type	Description	Input	Type
9	**Space**		1			2	
10	**Space**		3			4	
11	**Space**		5			6	
12	**Space**		7			8	
13	**Space**						
14	**Space**						
15	**Space**						
16	**Space**						

Panel ID	Description	Location	Type	Interior/Enclosure	Power Supply	Circuit	
5	Panel TBI - Ticket Booth D (Was MODs 10 & 11)	Ticket Booth D	32/32	Surface	115/277		
Rly	Circuit	Description	LV Switch	Rly	Circuit	Description	LV Switch
17	12HD-25	Flagpole (Out of Sec)(Old 11/1)		1	TBI-1	Canopy D (Old 10/1)	
18		Mod -11 relay 2		2	TBI-5	Canopy D (Old 10/2)	
19		Mod -11 relay 3		3	TBI-7	Plaza D (Old 10/3)	
20		Mod -11 relay 4		4	TBI-9	Plaza D (Old 10/4)	
21		Mod -11 relay 5		5	TBI-11	Canopy D (Old 10/5)	
22		Mod -11 relay 6		6	TBI-13	Canopy D (Old 10/6)	
23		Mod -11 relay 7		7	TBI-15	Canopy D (Old 10/7)	
24		Mod -11 relay 8		8	TBI-17	Canopy D (Old 10/8)	
25		Mod -11 relay 9		9	TBI-19	Canopy D (Old 10/9)	
26		Mod -11 relay 10		10	TBI-21	Canopy D (Old 10/10)	
27		Mod -11 relay 11		11	TBI-23	Canopy D (Old 10/11)	
28	TBI-7	Plaza D Floods (Old 11/12)		12	TBI-25	Canopy A (Old 10/12)	
29	TBI-7	Plaza C Floods (Old 11/13)		13	TBI-26	Plaza C (Old 10/13)	
30	TBI-7	Plaza D (Old 11/14)		14	TBI-27	Canopy D (Old 10/14)	
31	TBI-7	Mod -11 relay 15		15	TBI-28	Canopy D (Old 10/15)	
32	TBI-7	Plaza C (Old 11/16)		16	TBI-29	Plaza C (Old 10/16)	
Input	Type	Description	Input	Type	Description	Input	Type
9	**Space**		1			2	
10	**Space**		3			4	
11	**Space**		5			6	
12	**Space**		7			8	
13	**Space**						
14	**Space**						
15	**Space**						
16	**Space**						

Panel ID	Description	Location	Type	Interior/Enclosure	Power Supply	Circuit	
7	Panel TBI - Ticket Booth B (Was MOD 14)	Ticket Booth B	32/32	Surface	115/277		
Rly	Circuit	Description	LV Switch	Rly	Circuit	Description	LV Switch
17	**Space**	Space		1	TBI-3	Canopy B (Old 14/1)	
18	**Space**	Space		2	TBI-5	Canopy B (Old 14/2)	
19	**Space**	Space		3	TBI-7	Canopy B (Old 14/3)	
20	**Space**	Space		4	TBI-11	Canopy B (Old 14/4)	
21	**Space**	Space		5	TBI-13	Canopy B (Old 14/5)	
22	**Space**	Space		6	TBI-15	Canopy B (Old 14/6)	
23	**Space**	Space		7	TBI-17	Canopy B (Old 14/7)	
24	**Space**	Space		8	TBI-19	Canopy B (Old 14/8)	
25	**Space**	Space		9	TBI-21	Canopy B (Old 14/9)	
26	**Space**	Space		10	TBI-23	Canopy B (Old 14/10)	
27	**Space**	Space		11	TBI-25	Plaza A (Old 14/11)	
28	**Space**	Space		12	TBI-26	Plaza A (Old 14/12)	
29	**Space**	Space		13	TBI-27	Plaza B (Old 14/13)	
30	**Space**	Space		14	TBI-28	Plaza A (Old 14/14)	
31	**Space**	Space		15	12HC-25	Flagpole B (Old 14/15)	
32	**Space**	Space		16	TBI-7	Plaza A Floods (Old 14/16)	
Input	Type	Description	Input	Type	Description	Input	Type
9	**Space**		1			2	
10	**Space**		3			4	
11	**Space**		5			6	
12	**Space**		7			8	
13	**Space**						
14	**Space**						
15	**Space**						
16	**Space**						

Panel ID	Description	Location	Type	Interior/Enclosure	Power Supply	Circuit
8	Panel 25HA - Reg. D (Was MODs 16 & 17)	2nd Floor Registration between 214/215	32/32	Surface	115/277	

GENERAL NOTES:

- A. REFER TO SHEET E001-P1 FOR ELECTRICAL ABBREVIATIONS, SYMBOLS, AND GENERAL NOTES.
- B. DRAWING INTENT IS TO SHOW APPROXIMATE LOCATION OF IDF ROOMS AND/OR RELAY PANELS AS IDENTIFIED BY CLIENT AND AS BUILT DRAWINGS. CONTRACTOR TO COORDINATE WORK SCHEDULE WITH GRBCC/ HOUSTON FIRST TO ENSURE NO EVENTS ARE INTERRUPTED.
- C. RELAY PANEL SCHEDULES ARE POPULATED WITH THE AS-BUILT INFORMATION. ENGINEER HAS MADE A GOOD FAITH EFFORT TO CAPTURE ALL OF THE KNOWN RELAY CIRCUITS. CONTRACTOR TO FIELD VERIFY IF THERE ARE ANY MODIFICATIONS NOT CAPTURED ON AS-BUILTS. ALL RELAY CIRCUITS CURRENTLY SERVED BY EXISTING LIGHTING CONTROL SYSTEM TO BE MIGRATED TO NEW LIGHTING CONTROLS SYSTEMS REGARDLESS IF THEY HAVE BEEN CAPTURED ON THESE SCHEDULES.

Jacobs

5985 ROGERDALE RD
HOUSTON, TX 77072
P: 281-721-8400
www.Jacobs.com

© Jacobs 2019. ALL RIGHTS RESERVED.

Panel ID	Description	Location	Type	Interior/Enclosure	Power Supply	Circuit
10	Panel 25H8 - Reg. B (Was MODs 20 & 21)	2nd Floor Registration between 21/213	Retrofit	32/32 Surface	115/277	
Rly	Circuit	LV Switch	Rly	Circuit	Description	LV Switch
17	25H8-6		1	25H8-7	Reg. B (Old 20/1)	
18	25H8-8		2	25H8-9	Reg. B (Old 20/2)	
19	25H8-10		3	25H8-11	Reg. B (Old 20/3)	
20	25H8-12		4	25H8-13	Reg. B (Old 20/4)	
21	25H8-14		5	25H8-15	Reg. B (Old 20/5)	
22	25H8-20		6	25H8-17	Reg. B (Old 20/6)	
23	25H8-32		7	25H8-31	Restrooms 212/213 (Old 20/7)	
24	25H8-16		8	25H8-2	Truss/Ecol B (Old 20/8)	
25	25H8-18		9	25H8-4	Truss/Ecol C (Old 20/9)	
26	25H8-20		10	25H8-7	Truss/Ecol C-3 (Old 20/10)	
27	25H8-34		11		Mod -20 relay 11	
28	25H8-22		12		Mod -20 relay 12	
29	25H8-24		13		Mod -20 relay 13	
30	25H8-26		14		Mod -20 relay 14	
31	25H8-28		15		Mod -20 relay 15	
32			16		Mod -21 relay 16	
Input	Type	Description	Input	Type	Description	
9			1			
10			2			
11			3			
12			4			
13			5			
14			6			
15			7			
16			8			

Panel ID	Description	Location	Type	Interior/Enclosure	Power Supply	Circuit
11	Panel 25HC - 2R Boiler Room (Was MODs 22 & 23)	2R Past Boilers	Retrofit	32/32 Surface	115/277	
Rly	Circuit	LV Switch	Rly	Circuit	Description	LV Switch
17	25HC-3		1	25HC-2	Deck D (Old 22/1)	
18	25HC-7		2	25HC-4	Deck D (Old 22/2)	
19	25HC-8		3	25HC-6	Deck D (Old 22/3)	
20	25HC-13		4	25HC-8	Deck D (Old 22/4)	
21	25HC-17		5	25HC-10	Deck D (Old 22/5)	
22	25HC-27		6	25HC-12	Deck C (Old 22/6)	
23	25HC-29		7	25HC-14	Deck C (Old 22/7)	
24	25HC-43		8	25HC-16	Deck C (Old 22/8)	
25	25HC-46		9	25HC-18	Deck C (Old 22/9)	
26	25LC-24		10	25HC-20	Deck C (Old 22/10)	
27	25LC-1		11	25HC-1	EHD 50% (Old 22/11)	
28	25LC-3		12	25HC-5	EHD 25% (Old 22/12)	
29	25LC-5		13	25LC-24	??? EHD 25% (Old 22/13)	
30	25LC-7		14	25HC-11	EHD 13% (Old 22/14)	
31	25LC-9		15	25HC-15	EHD 13% (Old 22/15)	
32	25LC-11		16	25LC-26	C Deck Soffit Lts (Old 22/16)	
Input	Type	Description	Input	Type	Description	
9			1			
10			2			
11			3			
12			4			
13			5			
14			6			
15			7			
16			8			

Panel ID	Description	Location	Type	Interior/Enclosure	Power Supply	Circuit
13	Panel 25HD - 2R Kitchen Warehouse (Was MOD 24)	2R Mid Bldg	Retrofit	32/32 Surface	115/277	
Rly	Circuit	LV Switch	Rly	Circuit	Description	LV Switch
17	**Space**		1	25HD-1	EHD 50% (Old 24/1)	
18	**Space**		2	25HD-3	EHD 25% (Old 24/2)	
19	**Space**		3	25HD-5	EHD 25% (Old 24/3)	
20	**Space**		4	25HD-7	EHD 13% (Old 24/4)	
21	**Space**		5	25HD-9	EHD 12% (Old 24/5)	
22	**Space**		6	25HD-11	Deck B (Old 24/6)	
23	**Space**		7	25HD-13	Deck B (Old 24/7)	
24	**Space**		8	25HD-15	Deck B (Old 24/8)	
25	**Space**		9	25HD-17	Deck B (Old 24/9)	
26	**Space**		10	25HD-19	Deck B (Old 24/10)	
27	**Space**		11	25HD-23	B Hall Restrm (Rear) (Old 24/11)	
28	**Space**		12	25HD-25	B Hall Restrm (Rear) (Old 24/12)	
29	**Space**		13	25HD-21	B Dock Nr Lts (Old 24/13)	
30	**Space**		14	25LD-2	B Dock Spot Lts (Old 24/14)	
31	**Space**		15	25LD-4	B Dock Spot Lts (Old 24/15)	
32	**Space**		16	25LD-6	B Dock Spot Lts (Old 24/16)	
Input	Type	Description	Input	Type	Description	
9			1			
10			2			
11			3			
12			4			
13			5			
14			6			
15			7			
16			8			

Panel ID	Description	Location	Type	Interior/Enclosure	Power Supply	Circuit
13	Panel 25HA - Front Hall D (Was MODs 26 & 27)	MECH RM 107	Retrofit	32/32 Surface	115/277	
Rly	Circuit	LV Switch	Rly	Circuit	Description	LV Switch
17	35HA-2		1	35HA-16	EHD 50% (Old 26/1)	
18	35HA-4		2	35HA-3	EHD 50% (Old 26/2)	
19	35HA-15		3	35HA-5	EHD 50% (Old 26/3)	
20	35HA-21		4	35HA-7	EHD 50% (Old 26/4)	
21	35HA-10		5	35HA-9	EHD 50% (Old 26/5)	
22	35HA-12		6	35HA-11	EHD 50% (Old 26/6)	
23	35HA-14		7	35HA-13	EHD 50% (Old 26/7)	
24	35HA-18		8	35HA-6	EHD 50% (Old 26/8)	
25	35HA-20		9	35HA-17	EHD 50% (Old 26/9)	
26	35HA-30		10	35HA-19	EHD 50% (Old 26/10)	
27	35HA-24		11	35HA-8	EHD 50% (Old 26/11)	
28	35HA-1		12	35HA-23	EHD 50% (Old 26/12)	
29	35HA-25		13	35HA-25	EHD 50% (Old 26/13)	
30	35HA-28		14	35HA-27	EHD 50% (Old 26/14)	
31	35HA-22		15	35HA-29	EHD 50% (Old 26/15)	
32			16		Mod -21 relay 16	
Input	Type	Description	Input	Type	Description	
9			1			
10			2			
11			3			
12			4			
13			5			
14			6			
15			7			
16			8			

Panel ID	Description	Location	Type	Interior/Enclosure	Power Supply	Circuit
15	Panel 25HA - Front Hall C (Was MOD 28)	MECH RM 107	Retrofit	32/32 Surface	115/277	
Rly	Circuit	LV Switch	Rly	Circuit	Description	LV Switch
17	**Space**		1	35HA-12	EHD Nr Lts (Old 28/1)	
18	**Space**		2	35HA-24	D Starwells E/W (Old 28/2)	
19	**Space**		3	35HA-16	D Starwells E/W (Old 28/3)	
20	**Space**		4		Mod -28 relay 4	
21	**Space**		5		Mod -28 relay 5	
22	**Space**		6		Mod -28 relay 6	
23	**Space**		7		Mod -28 relay 7	
24	**Space**		8		Mod -28 relay 8	
25	**Space**		9		Mod -28 relay 9	
26	**Space**		10		Mod -28 relay 10	
27	**Space**		11		Mod -28 relay 11	
28	**Space**		12		Mod -28 relay 12	
29	**Space**		13		Mod -28 relay 13	
30	**Space**		14		Mod -28 relay 14	
31	**Space**		15		Mod -28 relay 15	
32	**Space**		16		Mod -31 relay 16	
Input	Type	Description	Input	Type	Description	
9			1			
10			2			
11			3			
12			4			
13			5			
14			6			
15			7			
16			8			

Panel ID	Description	Location	Type	Interior/Enclosure	Power Supply	Circuit
15	Panel 25HB - Rear Hall C (Was MODs 30 & 31)	MECH RM 111	Retrofit	32/32 Surface	115/277	
Rly	Circuit	LV Switch	Rly	Circuit	Description	LV Switch
17	35HB-2		1	35HB-6	EHC 50% (Old 30/1)	
18	35HB-3		2	35HB-3	EHC 50% (Old 30/2)	
19	35HB-1		3	35HB-5	EHC 50% (Old 30/3)	
20	35HB-8		4	35HB-7	EHC 50% (Old 30/4)	
21	35HB-5		5	35HB-9	EHC 50% (Old 30/5)	
22	35HB-10		6	35HB-11	EHC 50% (Old 30/6)	
23	35HB-14		7	35HB-13	EHC 50% (Old 30/7)	
24	35HB-16		8	35HB-15	EHC 50% (Old 30/8)	
25	35HB-18		9	35HB-17	EHC 50% (Old 30/9)	
26	35HB-20		10	35HB-19	EHC 50% (Old 30/10)	
27	35HB-22		11	35HB-21	EHC 50% (Old 30/11)	
28	35HB-24		12	35HB-25	EHC 50% (Old 30/12)	
29	35HB-16		13	35HB-23	EHC 50% (Old 30/13)	
30	35HB-12		14	35HB-27	EHC 50% (Old 30/14)	
31	35HB-34		15	35HB-29	EHC 50% (Old 30/15)	
32			16		EHC Nr Lts (Old 30/16)	
Input	Type	Description	Input	Type	Description	
9			1			
10			2			
11			3			
12			4			
13			5			
14			6			
15			7			
16			8			

Panel ID	Description	Location	Type	Interior/Enclosure	Power Supply	Circuit
17	Panel 25HC - Front Hall B (Was MODs 32 & 33)	MECH RM 122	Retrofit	32/32 Surface	115/277	
Rly	Circuit	LV Switch	Rly	Circuit	Description	LV Switch
17	35HC-2		1	35HC-1	EHD 50% (Old 32/1)	
18	35HC-4		2	35HC-3	EHD 50% (Old 32/2)	
19	35HC-6		3	35HC-5	EHD 50% (Old 32/3)	
20	35HC-8		4	35HC-7	EHD 50% (Old 32/4)	
21	35HC-10		5	35HC-9	EHD 50% (Old 32/5)	
22	35HC-12		6	35HC-11	EHD 50% (Old 32/6)	
23						

GENERAL NOTES:

- A. REFER TO SHEET E001-P1 FOR ELECTRICAL ABBREVIATIONS, SYMBOLS, AND GENERAL NOTES.
- B. DRAWING INTENT IS TO SHOW APPROXIMATE LOCATION OF IDF ROOMS AND/OR RELAY PANELS AS IDENTIFIED BY CLIENT AND AS BUILT DRAWINGS. CONTRACTOR TO COORDINATE WORK SCHEDULE WITH GRBCC/ HOUSTON FIRST TO ENSURE NO EVENTS ARE INTERRUPTED.
- C. RELAY PANEL SCHEDULES ARE POPULATED WITH THE AS-BUILT INFORMATION. ENGINEER HAS MADE A GOOD FAITH EFFORT TO CAPTURE ALL OF THE KNOWN RELAY CIRCUITS. CONTRACTOR TO FIELD VERIFY IF THERE ARE ANY MODIFICATIONS NOT CAPTURED ON AS-BUILTS. ALL RELAY CIRCUITS CURRENTLY SERVED BY EXISTING LIGHTING CONTROL SYSTEM TO BE MIGRATED TO NEW LIGHTING CONTROLS SYSTEMS REGARDLESS IF THEY HAVE BEEN CAPTURED ON THESE SCHEDULES.

Jacobs

5985 ROGERDALE RD
HOUSTON, TX 77072
P. 281-721-8400
www.Jacobs.com

© Jacobs 2019. ALL RIGHTS RESERVED.

Panel ID	Description	Location	Type	Interior/Enclosure	Power Supply	Circuit	
18	Panel 35HD - Rear Hall D (Was MOD 36)	MECH RM 137	Retrofit	32/32 Surface	115/277		
Rly	Circuit	Description	LV Switch	Rly	Circuit	Description	LV Switch
17	**Space**	Space		1	35HD-29	EHD 12% (Old 36/1)	
18	**Space**	Space		2	35HD-30	EHD 12% (Old 36/2)	
19	**Space**	Space		3	35HD-32	EHD 12% (Old 36/3)	
20	**Space**	Space		4	35HD-34	EHD 12% (Old 36/4)	
21	**Space**	Space		5	35HD-37	EHD Nt Lts (Old 36/5)	
22	**Space**	Space		6	35HD-39	D Stairwells E/W (Old 36/6)	
23	**Space**	Space		7	35HD-7	D Hall Roll-up Doors (Old 36/7)	
24	**Space**	Space		8	Mod-36 relay 8	Was 17-3 discontinued	
25	**Space**	Space		9	Mod-36 relay 9	rely not installed	
26	**Space**	Space		10	Exhaust Fan D-Hall near Restrooms		
27	**Space**	Space		11	Mod-36 relay 11		
28	**Space**	Space		12	Mod-36 relay 12		
29	**Space**	Space		13	Mod-36 relay 13		
30	**Space**	Space		14	Mod-36 relay 14		
31	**Space**	Space		15	Mod-36 relay 15		
32	**Space**	Space		16	Mod-36 relay 16		
Input	Type	Description	LV Switch	Input	Type	Description	LV Switch
9				1			
10				2			
11				3			
12				4			
13				5			
14				6			
15				7			
16				8			

Panel ID	Description	Location	Type	Interior/Enclosure	Power Supply	Circuit	
19	Panel 35HF - Rear Hall C (Was MODs 38 & 39)	MECH RM 139	Retrofit	32/32 Surface	115/277		
Rly	Circuit	Description	LV Switch	Rly	Circuit	Description	LV Switch
17	**Space**	Space		1	35HF-33	EHC 50% (Old 39/1)	
18	**Space**	Space		2	35HF-35	EHC 50% (Old 39/2)	
19	**Space**	Space		3	35HF-37	EHC 50% (Old 39/3)	
20	**Space**	Space		4	35HF-2	EHC 25% (Old 39/4)	
21	**Space**	Space		5	35HF-4	EHC 25% (Old 39/5)	
22	**Space**	Space		6	35HF-6	EHC 25% (Old 39/6)	
23	**Space**	Space		7	35HF-8	EHC 25% (Old 39/7)	
24	**Space**	Space		8	35HF-10	EHC 25% (Old 39/8)	
25	**Space**	Space		9	35HF-12	EHC 25% (Old 39/9)	
26	**Space**	Space		10	35HF-14	EHC 25% (Old 39/10)	
27	**Space**	Space		11	35HF-16	EHC 25% (Old 39/11)	
28	**Space**	Space		12	35HF-18	EHC 25% (Old 39/12)	
29	**Space**	Space		13	35HF-20	EHC 13% (Old 39/13)	
30	**Space**	Space		14	35HF-22	EHC 13% (Old 39/14)	
31	**Space**	Space		15	35HF-24	EHC 13% (Old 39/15)	
32	**Space**	Space		16	35HF-26	EHC 13% (Old 39/16)	
Input	Type	Description	LV Switch	Input	Type	Description	LV Switch
9				1			
10				2			
11				3			
12				4			
13				5			
14				6			
15				7			
16				8			

Panel ID	Description	Location	Type	Interior/Enclosure	Power Supply	Circuit	
20	Panel 35HF - Rear Hall C (Was MOD 40)	MECH RM 139	Retrofit	32/32 Surface	115/277		
Rly	Circuit	Description	LV Switch	Rly	Circuit	Description	LV Switch
17	**Space**	Space		1	35HF-28	EHC 12% (Old 40/1)	
18	**Space**	Space		2	35HF-30	EHC 12% (Old 40/2)	
19	**Space**	Space		3	35HF-32	EHC 12% (Old 40/3)	
20	**Space**	Space		4	35HF-34	EHC 12% (Old 40/4)	
21	**Space**	Space		5	35HF-41	EHC Night Lights (Old 40/5)	
22	**Space**	Space		6	35HF-39	C Stairwells E/W (Old 40/6)	
23	**Space**	Space		7	35HF-7	C Hall Roll-up Doors (Old 40/7)	
24	**Space**	Space		8	Mod-40 relay 8		
25	**Space**	Space		9	Mod-40 relay 9		
26	**Space**	Space		10	Mod-40 relay 10		
27	**Space**	Space		11	Mod-40 relay 11		
28	**Space**	Space		12	Mod-40 relay 12		
29	**Space**	Space		13	Mod-40 relay 13		
30	**Space**	Space		14	Mod-40 relay 14		
31	**Space**	Space		15	Mod-40 relay 15		
32	**Space**	Space		16	Mod-40 relay 16		
Input	Type	Description	LV Switch	Input	Type	Description	LV Switch
9				1			
10				2			
11				3			
12				4			
13				5			
14				6			
15				7	MASTER		
16				8			

Panel ID	Description	Location	Type	Interior/Enclosure	Power Supply	Circuit	
21	Panel 35HG - Rear Hall B (Was MODs 42 & 43)	MECH RM 229	Retrofit	32/32 Surface	115/277		
Rly	Circuit	Description	LV Switch	Rly	Circuit	Description	LV Switch
17	**Space**	Space		1	35HG-33	EHB 50% (Old 42/1)	
18	**Space**	Space		2	35HG-35	EHB 50% (Old 42/2)	
19	**Space**	Space		3	35HG-37	EHB 50% (Old 42/3)	
20	**Space**	Space		4	35HG-2	EHB 25% (Old 42/4)	
21	**Space**	Space		5	35HG-4	EHB 25% (Old 42/5)	
22	**Space**	Space		6	35HG-6	EHB 25% (Old 42/6)	
23	**Space**	Space		7	35HG-8	EHB 25% (Old 42/7)	
24	**Space**	Space		8	35HG-10	EHB 25% (Old 42/8)	
25	**Space**	Space		9	35HG-12	EHB 25% (Old 42/9)	
26	**Space**	Space		10	35HG-14	EHB 25% (Old 42/10)	
27	**Space**	Space		11	35HG-16	EHB 25% (Old 42/11)	
28	**Space**	Space		12	35HG-18	EHB 25% (Old 42/12)	
29	**Space**	Space		13	35HG-20	EHB 13% (Old 42/13)	
30	**Space**	Space		14	35HG-22	EHB 13% (Old 42/14)	
31	**Space**	Space		15	35HG-24	EHB 13% (Old 42/15)	
32	**Space**	Space		16	35HG-26	EHB 13% (Old 42/16)	
Input	Type	Description	LV Switch	Input	Type	Description	LV Switch
9				1			
10				2			
11				3			
12				4			
13				5			
14				6			
15				7			
16				8			

Panel ID	Description	Location	Type	Interior/Enclosure	Power Supply	Circuit	
22	Panel 35HG - Rear Hall B (Was MOD 44)	MECH RM 229	Retrofit	32/32 Surface	115/277		
Rly	Circuit	Description	LV Switch	Rly	Circuit	Description	LV Switch
17	**Space**	Space		1	35HG-28	EHB 12% (Old 44/1)	
18	**Space**	Space		2	35HG-30	EHB 12% (Old 44/2)	
19	**Space**	Space		3	35HG-32	EHB 12% (Old 44/3)	
20	**Space**	Space		4	35HG-34	EHB 12% (Old 44/4)	
21	**Space**	Space		5	35HG-39	EHC Night Lights (Old 44/5)	
22	**Space**	Space		6	35HG-41	B Stairwells E/W (Old 44/6)	
23	**Space**	Space		7	35HG-7	B Hall Roll-up Doors (Old 44/7)	
24	**Space**	Space		8	Mod-44 relay 8		
25	**Space**	Space		9	Mod-44 relay 9		
26	**Space**	Space		10	Mod-44 relay 10		
27	**Space**	Space		11	Mod-44 relay 11		
28	**Space**	Space		12	Mod-44 relay 12		
29	**Space**	Space		13	Mod-44 relay 13		
30	**Space**	Space		14	Mod-44 relay 14		
31	**Space**	Space		15	Mod-44 relay 15		
32	**Space**	Space		16	Mod-44 relay 16		
Input	Type	Description	LV Switch	Input	Type	Description	LV Switch
9				1			
10				2			
11				3			
12				4			
13				5			
14				6			
15				7			
16				8			

Panel ID	Description	Location	Type	Interior/Enclosure	Power Supply	Circuit	
23	Panel 35HA - Front GA (Was MODs 45 & 47)	MECH RM 208	Retrofit	32/32 Surface	115/277		
Rly	Circuit	Description	LV Switch	Rly	Circuit	Description	LV Switch
17	**Space**	Space		1	35HA-2	Truss D - Balcony D (Old 47/1)	
18	**Space**	Space		2	35HA-4	Truss D - Balcony D (Old 47/2)	
19	**Space**	Space		3	35HA-6	+71 Level Public Area (Old 46/3)	
20	**Space**	Space		4	35HA-8	Truss D - Balcony D (Old 47/4)	
21	**Space**	Space		5	35HA-10	Truss D - Escalators D (Old 47/5)	
22	**Space**	Space		6	35HA-12	Truss D - Escalators D (Old 47/6)	
23	**Space**	Space		7	35HA-14	Truss D - Escalators D (Old 47/7)	
24	**Space**	Space		8	35HA-16	Truss D - Escalators D (Old 47/8)	
25	**Space**	Space		9	35HA-24	GA M Restroom N (Old 47/9)	
26	**Space**	Space		10	35HA-26	GA W Restroom N (Old 47/10)	
27	**Space**	Space		11	35HA-27	GA M Restroom S (Old 47/11)	
28	**Space**	Space		12	35HA-29	GA W Restroom S (Old 47/12)	
29	**Space**	Space		13	35HA-32	Bldg Director (Old 47/13)	
30	**Space**	Space		14	Mod-47 relay 14		
31	**Space**	Space		15	Mod-47 relay 15		
32	**Space**	Space		16	Mod-47 relay 16		
Input	Type	Description	LV Switch	Input	Type	Description	LV Switch
9				1			
10				2			
11				3			
12				4			
13				5			
14				6			
15				7			
16				8			

Panel ID	Description	Location	Type	Interior/Enclosure	Power Supply	Circuit	
24	Panel 83HB - Front Ballrooms (Was MODs 48 & 49)	MECH RM 210	Retrofit	32/32 Surface	115/277		
Rly	Circuit	Description	LV Switch	Rly	Circuit	Description	LV Switch
17	83HB-2	Truss C - Balcony C (Old 49/1)					

GENERAL NOTES:

- A. REFER TO SHEET E001-P1 FOR ELECTRICAL ABBREVIATIONS, SYMBOLS, AND GENERAL NOTES.
- B. DRAWING INTENT IS TO SHOW APPROXIMATE LOCATION OF IDF ROOMS AND/OR RELAY PANELS AS IDENTIFIED BY CLIENT AND AS BUILT DRAWINGS. CONTRACTOR TO COORDINATE WORK SCHEDULE WITH GRBCC/ HOUSTON FIRST TO ENSURE NO EVENTS ARE INTERRUPTED.
- C. RELAY PANEL SCHEDULES ARE POPULATED WITH THE AS-BUILT INFORMATION. ENGINEER HAS MADE A GOOD FAITH EFFORT TO CAPTURE ALL OF THE KNOWN RELAY CIRCUITS. CONTRACTOR TO FIELD VERIFY IF THERE ARE ANY MODIFICATIONS NOT CAPTURED ON AS-BUILTS. ALL RELAY CIRCUITS CURRENTLY SERVED BY EXISTING LIGHTING CONTROL SYSTEM TO BE MIGRATED TO NEW LIGHTING CONTROLS SYSTEMS REGARDLESS IF THEY HAVE BEEN CAPTURED ON THESE SCHEDULES.



5985 ROGERDALE RD
HOUSTON, TX 77072
P. 281-721-8400
www.Jacobs.com

© Jacobs 2019. ALL RIGHTS RESERVED.

Panel ID	Description	Location	Type	Interior/Enclosure	Power Supply	Circuit
26	Panel 83HC - Front Hall B3 (Was MOD 52)	MECH RM 212	Retrofit	32/32 Surface	115/277	
Rly	Circuit	Description	Rly	Circuit	Description	LV Switch
17	**Space**	Space	1	83HC-42	EHG 12% (Old 52/1)	
18	**Space**	Space	2	83HC-44	EHG 12% (Old 52/2)	
19	**Space**	Space	3	83HC-46	EHG 12% (Old 52/3)	
20	**Space**	Space	4	83HC-48	EHG 12% (Old 52/4)	
21	**Space**	Space	5	83HC-50	Trans B - Balcony A (Old 52/5)	
22	**Space**	Space	6	83HC-4	Trans B - Balcony A (Old 52/6)	
23	**Space**	Space	7	83HC-6	Trans B - Balcony A (Old 52/7)	
24	**Space**	Space	8	83HC-8	Trans B - Balcony A (Old 52/8)	
25	**Space**	Space	9	83HC-10	Trans B - Escalators B (Old 52/9)	
26	**Space**	Space	10	83HC-12	Trans B - Escalators B (Old 52/10)	
27	**Space**	Space	11	83HC-14	Trans B - Escalators B (Old 52/11)	
28	**Space**	Space	12	83HC-16	Trans B - Escalators B (Old 52/12)	
29	**Space**	Space	13	83HC-50(7)	Est B 2-3 Soffit Lts (Old 52/13)	
30	**Space**	Space	14		Mod -52 relay 14	
31	**Space**	Space	15		Mod -52 relay 15	
32	**Space**	Space	16		Mod -52 relay 16	
Input	Type	Description	Input	Type	Description	
9			1			
10			2			
11			3			
12			4			
13			5			
14			6			
15			7			
16			8			

Panel ID	Description	Location	Type	Interior/Enclosure	Power Supply	Circuit
27	Panel 83HD - Rear Gen Assy (Was MOD 54)	MECH RM 223	Retrofit	32/32 Surface	115/277	
Rly	Circuit	Description	Rly	Circuit	Description	LV Switch
17	**Space**	Space	1	83HD-1	+71 Level Public Area (Old 54/1)	
18	**Space**	Space	2	83HD-3	+71 Level Public Area (Old 54/2)	
19	**Space**	Space	3	83HD-5	+51 Level 318 Hallway (Old 54/3)	
20	**Space**	Space	4	83HD-7	+51 Level Back Hallway (Old 54/4)	
21	**Space**	Space	5	83HD-9	+51 Level 317 Hallway (Old 54/5)	
22	**Space**	Space	6	83D-20	Soffit Lts 318 Hallway (Old 54/6)	
23	**Space**	Space	7	83D-22	Soffit Lts 317 Hallway (Old 54/7)	
24	**Space**	Space	8	83HD-2	GA Dock (Old 54/8)	
25	**Space**	Space	9	83HD-4	GA Dock (Old 54/9)	
26	**Space**	Space	10	83D-8	GA Dock Spot Lts (Old 54/10)	
27	**Space**	Space	11	83HD-7	GA Roll-up Doors (Old 54/11)	
28	**Space**	Space	12		Mod -54 relay 12	
29	**Space**	Space	13		Mod -54 relay 13	
30	**Space**	Space	14		Mod -54 relay 14	
31	**Space**	Space	15		Mod -54 relay 15	
32	**Space**	Space	16		Mod -54 relay 16	
Input	Type	Description	Input	Type	Description	
9			1			
10			2			
11			3			
12			4			
13			5			
14			6			
15			7			
16			8			

Panel ID	Description	Location	Type	Interior/Enclosure	Power Supply	Circuit
28	Panel 83HF - Rear Ballrooms (Was MOD 56)	MECH RM 221	Retrofit	32/32 Surface	115/277	
Rly	Circuit	Description	Rly	Circuit	Description	LV Switch
17	**Space**	Space	1	83HF-4	Whim [EHG]Kitchen R8ms (Old 56/1)	
18	**Space**	Space	2	83HF-5	+51 Level Kitchen Hallway (Old 56/2)	
19	**Space**	Space	3	83HF-7	+51 Level Back Hallway (Old 56/3)	
20	**Space**	Space	4	83HF-9	+51 Lvl BR Service Hallway (Old 56/4)	
21	**Space**	Space	5	83HF-11	+51 Lvl BR Service Hallway (Old 56/5)	
22	**Space**	Space	6	83HF-13	+51 Level Back Hallway (Old 56/6)	
23	**Space**	Space	7	83F-19	Soffit Lts BR Svc Hall (Old 56/7)	
24	**Space**	Space	8	83F-21	Soffit Lts BR Svc Hall (Old 56/8)	
25	**Space**	Space	9	83HF-1	BR Dock (Old 56/9)	
26	**Space**	Space	10	83HF-3	BR Dock (Old 56/10)	
27	**Space**	Space	11	83HF-15	BR Dock (Old 56/11)	
28	**Space**	Space	12	83HF-17	BR Dock (Old 56/12)	
29	**Space**	Space	13	83F-13	BR Dock Spot Lts (Old 56/13)	
30	**Space**	Space	14	83HF-7	BR Dock Roll-up Doors (Old 56/14)	
31	**Space**	Space	15		Mod -56 relay 15	
32	**Space**	Space	16		Mod -56 relay 16	
Input	Type	Description	Input	Type	Description	
9			1			
10			2			
11			3			
12			4			
13			5			
14			6			
15			7			
16			8			

Panel ID	Description	Location	Type	Interior/Enclosure	Power Supply	Circuit
29	Panel 83HG - Rear Hall B3 (Was MODs 58 & 59)	MECH RM 217	Retrofit	32/32 Surface	115/277	
Rly	Circuit	Description	Rly	Circuit	Description	LV Switch
17	83HG-2	EHG 20% (Old 59/1)	1	83HG-1	EHG 50% (Old 58/1)	
18	83HG-4	EHG 20% [Shutterlights] (Old 59/2)	2	83HG-3	EHG 50% (Old 58/2)	
19	83HG-6	EHG 20% (Old 59/3)	3	83HG-5	EHG 50% (Old 58/3)	
20	83HG-8	EHG 20% (Old 59/4)	4	83HG-7	EHG 50% (Old 58/4)	
21	83HG-10	EHG 20% (Old 59/5)	5	83HG-9	EHG 50% (Old 58/5)	
22	83HG-12	EHG 20% (Old 59/6)	6	83HG-11	EHG 50% (Old 58/6)	
23	83HG-14	EHG 20% (Old 59/7)	7	83HG-13	EHG 50% (Old 58/7)	
24	83HG-16	EHG 13% (Old 59/8)	8	83HG-15	EHG 50% (Old 58/8)	
25	83HG-18	EHG 13% (Old 59/9)	9	83HG-17	EHG 50% (Old 58/9)	
26	83HG-20	EHG 13% (Old 59/10)	10	83HG-19	EHG 50% (Old 58/10)	
27	83HG-22	EHG 13% (Old 59/11)	11	83HG-21	EHG 50% (Old 58/11)	
28	83HG-24	EHG 13% (Old 59/12)	12	83HG-23	EHG 50% (Old 58/12)	
29	83HG-26	EHG 12% (Old 59/13)	13	83HG-25	EHG 50% (Old 58/13)	
30	83HG-28	EHG 12% (Old 59/14)	14	83HG-27	EHG 50% (Old 58/14)	
31	83HG-30	EHG 12% (Old 59/15)	15	83HG-29	EHG 50% (Old 58/15)	
32	83HG-32	East Wall Exit Dr Lts - G Hall (Old 59/16)	16	83HG-36	EHG Night Lts (Old 58/16)	
Input	Type	Description	Input	Type	Description	
9			1			
10			2			
11			3			
12			4			
13			5			
14			6			
15			7			
16			8			

Panel ID	Description	Location	Type	Interior/Enclosure	Power Supply	Circuit
30	Panel 83HC - Rear Hall B3 (Was MOD 60)	MECH RM 217	Retrofit	32/32 Surface	115/277	
Rly	Circuit	Description	Rly	Circuit	Description	LV Switch
17	**Space**	Space	1	83HC-31	Dock G (Old 60/1)	
18	**Space**	Space	2	83HC-33	Dock G (Old 60/2)	
19	**Space**	Space	3	83HC-35	Dock G (Old 60/3)	
20	**Space**	Space	4	83HC-37	Dock G (Old 60/4)	
21	**Space**	Space	5	83HC-39	Dock G (Old 60/5)	
22	**Space**	Space	6	83HC-41	Dock G (Old 60/6)	
23	**Space**	Space	7	83HC-1	Dock G Spot Lts (Old 60/7)	
24	**Space**	Space	8	83HC-7	G Hall Roll-up Doors (Old 60/8)	
25	**Space**	Space	9		Mod -60 relay 9	
26	**Space**	Space	10		Mod -60 relay 10	
27	**Space**	Space	11		Mod -60 relay 11	
28	**Space**	Space	12		Mod -60 relay 12	
29	**Space**	Space	13		Mod -60 relay 13	
30	**Space**	Space	14		Mod -60 relay 14	
31	**Space**	Space	15		Mod -60 relay 15	
32	**Space**	Space	16		Mod -60 relay 16	
Input	Type	Description	Input	Type	Description	
9			1			
10			2			
11			3			
12			4			
13			5			
14			6			
15			7			
16			8			

Panel ID	Description	Location	Type	Interior/Enclosure	Power Supply	Circuit
201	LCP-128PA - Tunnel A		CC	12/12 Surface	115/277	
Rly	Circuit	Description	Rly	Circuit	Description	LV Switch
1	12HA-1	TUNNEL LIGHTING NE				
2	12HA-2	TUNNEL LIGHTING NE				
3	12HA-3	TUNNEL LIGHTING NE				
4	12HA-4	TUNNEL LIGHTING NE				
5	12HA-5	ELECTRICAL ROOM LEVEL -12 NE				
6	12HA-23	SPACE				
7		SPACE				
8		SPACE				
9		SPACE				
10		SPACE				
11		SPACE				
12		SPACE				
Input	Type	Description	Input	Type	Description	
A			B			
1						
2						
3						

Panel ID	Description	Location	Type	Interior/Enclosure	Power Supply	Circuit
202	LCP-359PA - Rear Hall A		CC	48/48 Surface	115/277	
Rly	Circuit	Description	Rly	Circuit	Description	LV Switch
1	35HA-1	EXHIBIT HALL (LARGE STAGE) GROUP A +0 NE	13	35HA-10	EXHIBIT HALL (SMALL STAGE) GROUP E +0 NE	
2	35HA-3	EXHIBIT HALL (LARGE STAGE) GROUP B +0 NE	14	35HA-10	EXHIBIT HALL (SMALL STAGE) GROUP F +0 NE	
3	35HA-11	EXHIBIT HALL (EMERG) GROUP C +0 NE	15	35HA-12	EXHIBIT HALL (SMALL STAGE) GROUP G +0 NE	
4	35HA-5	EXHIBIT HALL (LARGE STAGE) GROUP D +0 NE	16	35HA-12	EXHIBIT HALL (SMALL STAGE) GROUP H +0 NE	
5	35HA-2	EXHIBIT HALL (LARGE STAGE) GROUP E +0 NE	17	35HA-13	EXHIBIT HALL (SMALL STAGE) GROUP A +0 NE	
6	35HA-4	EXHIBIT HALL (LARGE STAGE) GROUP F +0 NE	18	35HA-13	EXHIBIT HALL (SMALL STAGE) GROUP B +0 NE	
7	35HA-6	EXHIBIT HALL (LARGE STAGE) GROUP G +0 NE	19	35HA-15	EXHIBIT HALL GROUP A +0 NE	
8	35HA-7	EXHIBIT HALL (LARGE STAGE) GROUP H +0 NE	20	35HA-17	EXHIBIT HALL GROUP B +0 NE	
9	35HA-9	EXHIBIT HALL (LARGE STAGE) GROUP C +0 NE	21	35HA-15	EXHIBIT HALL (EMERG) GROUP C +0 NE	
10	35HA-11	EXHIBIT HALL (LARGE STAGE) GROUP D +0 NE	22	35HA-14	EXHIBIT HALL GROUP D +0 NE	
11	35HA-13	EXHIBIT HALL (EMERG) GROUP C +0 NE	23	35HA-16	EXHIBIT HALL GROUP E +0 NE	
12	35HA-8	EXHIBIT HALL (LARGE STAGE) GROUP D +0 NE	24	35HA-18	EXHIBIT HALL GROUP F +0 NE	
Rly	Circuit	Description	Rly	Circuit	Description	LV Switch
25	35HA-20	EXHIBIT HALL GROUP G +0 NE	27	35HA-19	EXHIBIT HALL (EMERG) GROUP C +0 NE	

GENERAL NOTES:

- A. REFER TO SHEET E001-P1 FOR ELECTRICAL ABBREVIATIONS, SYMBOLS, AND GENERAL NOTES.
- B. DRAWING INTENT IS TO SHOW APPROXIMATE LOCATION OF IDF ROOMS AND/OR RELAY PANELS AS IDENTIFIED BY CLIENT AND AS BUILT DRAWINGS. CONTRACTOR TO COORDINATE WORK SCHEDULE WITH GRBCC/HOUSTON FIRST TO ENSURE NO EVENTS ARE INTERRUPTED.
- C. RELAY PANEL SCHEDULES ARE POPULATED WITH THE AS-BUILT INFORMATION. ENGINEER HAS MADE A GOOD FAITH EFFORT TO CAPTURE ALL OF THE KNOWN RELAY CIRCUITS. CONTRACTOR TO FIELD VERIFY IF THERE ARE ANY MODIFICATIONS NOT CAPTURED ON AS-BUILTS. ALL RELAY CIRCUITS CURRENTLY SERVED BY EXISTING LIGHTING CONTROL SYSTEM TO BE MIGRATED TO NEW LIGHTING CONTROL SYSTEMS REGARDLESS IF THEY HAVE BEEN CAPTURED ON THESE SCHEDULES.



5985 ROGERDALE RD
HOUSTON, TX 77072
P. 281-721-8400
www.Jacobs.com

© Jacobs 2019. ALL RIGHTS RESERVED.

Panel ID	Description	Location	Type	Interior/Enclosure	Power Supply	Circuit	
205	LCP-359PA - Reg. A	H1 NW	CC	48/48 Surface	115/277		
Rly	Circuit	Description	LV Switch	Rly	Circuit	Description	LV Switch
1	35H2B-1	WATER HEATER LEVEL +25		13	35H2B-11	WB LIGHTING +25 NW	
2	35H2B-3	WATER HEATER LEVEL +0		14	35H2B-13	WB LIGHTING +25 NW	
3	35H2B-2	LIGHTING ABOVE ESCALATOR NW		15	35H2B-15	MECH ROOM +35 NW	
4	35H2B-4	LIGHTING ABOVE ESCALATOR NW		16	35H2B-17	LIGHTING LVL 35 NW	
5	35H2B-7	TICKET BOOTH LIGHTING +0 NW		17	35H2B-24	LIGHTING Sprink Games 2.5 offices	
6	35H2B-2	REGISTRATION +25 NW		18	35H2B-9	LIGHTING LEVEL +25 LOW CEILING	
7	35H2B-4	REGISTRATION +25 NW		19	35H2B-19	LIGHTING LEVEL +25 OFFICE NW	
8	35H2B-6	REGISTRATION +25 NW		20	35H2B-20	LIGHTING LEVEL +25 OFFICE NW	
9	35H2B-8	REGISTRATION +25 NW		21	35H2B-22	LIGHTING LEVEL +25 OFFICE NW	
10	35H2B-10	REGISTRATION +25 NW		22	35H2B-16	LIGHTING LEVEL +25 RESTROOMS/HK-Warehouse NW	
11	35H2B-12	REGISTRATION +25 NW		23	35H2B-23	WATER HEATER TICKET BOOTH	
12	35H2B-14	REGISTRATION +25 NW		24	SPARE		
Rly	Circuit	Description	LV Switch	Rly	Circuit	Description	LV Switch
25	SPARE			37			
26	SPARE			38			
27	SPARE			39			
28	SPACE			40			
29	SPACE			41			
30	SPACE			42			
31	SPACE			43			
32	SPACE			44			
33	SPACE			45			
34	SPACE			46			
35	SPACE			47			
36	SPACE			48			
Input	Type	Description		Input	Type	Description	
A				B			
1				4			
2				5			
3				6			
7				10			
8				11			
9				12			

Panel ID	Description	Location	Type	Interior/Enclosure	Power Supply	Circuit	
205	LCP-359PB - Front Hall A	H1 NW BY AHJ	CC	48/48 Surface	115/277		
Rly	Circuit	Description	LV Switch	Rly	Circuit	Description	LV Switch
1	35H2B-1	EXHIBIT HALL (STAGE) GROUP A +0 NW		13	35H2B-6	EXHIBIT HALL GROUP E +0 NW	
2	35H2B-3	EXHIBIT HALL (STAGE) GROUP B +0 NW		14	35H2B-10	EXHIBIT HALL GROUP F +0 NW	
3	35H2B-2	EXHIBIT HALL (STAGE) EMERG GROUP C +0 NW		15	35H2B-12	EXHIBIT HALL GROUP G +0 NW	
4	35H2B-5	EXHIBIT HALL (STAGE) GROUP D +0 NW		16	35H2B-15	EXHIBIT HALL GROUP H +0 NW	
5	35H2B-7	EXHIBIT HALL (STAGE) GROUP E +0 NW		17	35H2B-17	EXHIBIT HALL GROUP A +0 NW	
6	35H2B-4	EXHIBIT HALL (STAGE) GROUP F +0 NW		18	35H2B-19	EXHIBIT HALL GROUP B +0 NW	
7	35H2B-6	EXHIBIT HALL (EMERG) GROUP C +0 NW		19	35H2B-6	EXHIBIT HALL (EMERG) GROUP C +0 NW	
8	35H2B-7	EXHIBIT HALL (STAGE) GROUP H +0 NW		20	35H2B-14	EXHIBIT HALL GROUP D +0 NW	
9	35H2B-9	EXHIBIT HALL GROUP A +0 NW		21	35H2B-16	EXHIBIT HALL GROUP E +0 NW	
10	35H2B-11	EXHIBIT HALL GROUP B +0 NW		22	35H2B-18	EXHIBIT HALL GROUP F +0 NW	
11	35H2B-4	EXHIBIT HALL (EMERG) GROUP C +0 NW		23	35H2B-21	EXHIBIT HALL GROUP G +0 NW	
12	35H2B-13	EXHIBIT HALL GROUP D +0 NW		24	35H2B-23	EXHIBIT HALL GROUP H +0 NW	
Rly	Circuit	Description	LV Switch	Rly	Circuit	Description	LV Switch
25	35H2B-20	EXHIBIT HALL FRONT GROUP W +0 NW		37	35H2B-31	EXHIBIT HALL FRONT GROUP Z +0 NW	
26	35H2B-22	EXHIBIT HALL FRONT GROUP X +0 NW		38	35H2B-33	ENTRANCE +0 NW	
27	35H2B-24	EXHIBIT HALL FRONT GROUP Y +0 NW		39	35H2B-10	ENTRANCE (EMERG) +0 NW	
28	35H2B-25	EXHIBIT HALL FRONT GROUP Z +0 NW		40	35H2B-35	ENTRANCE +0 NW	
29	35H2B-12	EXHIBIT HALL FRONT EMERG GROUP W+0 NW		41	35H2B-32	ENTRANCE +0 NW	
30	35H2B-29	EXHIBIT HALL FRONT GROUP X +0 NW		42	35H2B-34	ENTRANCE +0 NW	
31	35H2B-1	EXHIBIT HALL FRONT GROUP Y +0 NW		43	35H2B-36	RESTROOM LIGHTING NW	
32	35H2B-27	EXHIBIT HALL FRONT GROUP Z +0 NW		44	35H2B-41	WATER HEATER +S1	
33	35H2B-9	EXHIBIT HALL (EMERG) FRONT +0 NW		45	35H2B-5	CANOPY LIGHTING +0 NW	
34	35H2B-26	EXHIBIT HALL FRONT GROUP W +0 NW		46	35H2B-2	CANOPY LIGHTING +0 NW	
35	35H2B-28	EXHIBIT HALL FRONT GROUP X +0 NW		47	35H2B-3	ENTRANCE LIGHTING +0 NW	
36	35H2B-30	EXHIBIT HALL FRONT GROUP Y +0 NW		48	35H2B-4	SIGN LIGHTING +0 NW	
Input	Type	Description		Input	Type	Description	
A				B			
1				4			
2				5			
3				6			
7				10			
8				11			
9				12			

Panel ID	Description	Location	Type	Interior/Enclosure	Power Supply	Circuit	
206	LCP-839PB - Front Hall A3		CC	48/48 Surface	115/277		
Rly	Circuit	Description	LV Switch	Rly	Circuit	Description	LV Switch
1	83H2B-3	EXHIBIT HALL (STAGE) GROUP A +51 NW		13	83H2B-8	EXHIBIT HALL GROUP E +51 NW	
2	83H2B-3	EXHIBIT HALL (STAGE) GROUP B +51 NW		14	83H2B-10	EXHIBIT HALL GROUP F +51 NW	
3	83H2B-1	EXHIBIT HALL (STAGE) EMERG GROUP C +51 NW		15	83H2B-12	EXHIBIT HALL (STAGE) GROUP G +51 NW	
4	83H2B-5	EXHIBIT HALL (STAGE) GROUP D +51 NW		16	83H2B-5	EXHIBIT HALL (STAGE) GROUP H +51 NW	
5	83H2B-2	EXHIBIT HALL (STAGE) GROUP E +51 NW		17	83H2B-17	EXHIBIT HALL GROUP A +51 NW	
6	83H2B-4	EXHIBIT HALL (STAGE) GROUP F +51 NW		18	83H2B-19	EXHIBIT HALL GROUP B +51 NW	
7	83H2B-6	EXHIBIT HALL (EMERG) GROUP C +51 NW		19	83H2B-9	EXHIBIT HALL (EMERG) GROUP C +51 NW	
8	83H2B-7	EXHIBIT HALL (STAGE) GROUP H +51 NW		20	83H2B-14	EXHIBIT HALL GROUP D +51 NW	
9	83H2B-9	EXHIBIT HALL GROUP A +51 NW		21	83H2B-16	EXHIBIT HALL GROUP E +51 NW	
10	83H2B-11	EXHIBIT HALL GROUP B +51 NW		22	83H2B-18	EXHIBIT HALL GROUP F +51 NW	
11	83H2B-3	EXHIBIT HALL (EMERG) GROUP C +51 NW		23	83H2B-21	EXHIBIT HALL GROUP G +51 NW	
12	83H2B-13	EXHIBIT HALL GROUP H +51 NW		24	83H2B-23	EXHIBIT HALL GROUP H +51 NW	
Rly	Circuit	Description	LV Switch	Rly	Circuit	Description	LV Switch
25	83H2B-20	EXHIBIT HALL FRONT GROUP W +51 NW		37	83H2B-31	EXHIBIT HALL (EMERG) GROUP C +51 NE	
26	83H2B-22	EXHIBIT HALL FRONT GROUP X +51 NW		38	83H2B-33	ENTRANCE (EMERG) +51 NW	
27	83H2B-24	EXHIBIT HALL FRONT GROUP Y +51 NW		39	83H2B-10	EXHIBIT HALL GROUP E +51 NE	
28	83H2B-25	EXHIBIT HALL FRONT GROUP Z +51 NW		40	83H2B-33	ENTRANCE +51 NW	
29	83H2B-2	EXHIBIT HALL FRONT EMERG GROUP W +51 NW		41	83H2B-37	LIGHTING MECH LVL 63	
30	83H2B-12	EXHIBIT HALL FRONT GROUP X +51 NW		42	SPARE		
31	83H2B-7	EXHIBIT HALL (FRONT-EMERG) GROUP Y +51 NW		43	83H2B-39	EXHIBIT HALL FRONT FURR DOWN +51NW	
32	83H2B-34	EXHIBIT HALL FRONT GROUP Z +51 NW		44	SPARE		
33	83H2B-27	Truss Lights A/F		45	SPARE		
34	83H2B-26	Truss Lights A/F		46	SPARE		
35	83H2B-28	Truss Lights A/F		47	SPARE		
36	83H2B-30	Truss Lights A/F		48	SPARE		
Input	Type	Description		Input	Type	Description	
A				B			
1				4			
2				5			
3				6			
7				10			
8				11			
9				12			

Panel ID	Description	Location	Type	Interior/Enclosure	Power Supply	Circuit	
207	LCP-839PA-1 - Rear Hall A3		CC	48/48 Surface	115/277		
Rly	Circuit	Description	LV Switch	Rly	Circuit	Description	LV Switch
1	83H2A-3	EXHIBIT HALL (LARGE STAGE) GROUP A +51 NE		13	83H2A-10	EXHIBIT HALL (SMALL STAGE) GROUP E +51 NE	
2	83H2A-3	EXHIBIT HALL (LARGE STAGE) GROUP B +51 NE		14	83H2A-10	EXHIBIT HALL (SMALL STAGE) GROUP F +51 NE	
3	83H2A-11	EXHIBIT HALL (LARGE STAGE) GROUP C +51 NE		15	83H2A-12	EXHIBIT HALL (SMALL STAGE) GROUP G +51 NE	
4	83H2A-5	EXHIBIT HALL (LARGE STAGE) GROUP D +51 NE		16	83H2A-12	EXHIBIT HALL (SMALL STAGE) GROUP H +51 NE	
5	83H2A-2	EXHIBIT HALL (LARGE STAGE) GROUP E +51 NE		17	83H2A-14	EXHIBIT HALL (SMALL STAGE) GROUP A +51 NE	
6	83H2A-4	EXHIBIT HALL (LARGE STAGE) GROUP F +51 NE		18	83H2A-14	EXHIBIT HALL (SMALL STAGE) GROUP B +51 NE	
7	83H2A-6	EXHIBIT HALL (LARGE STAGE) GROUP G +51 NE		19	83H2A-14	EXHIBIT HALL GROUP A +51 NE	
8	83H2A-7	EXHIBIT HALL (LARGE STAGE) GROUP H +51 NE		20	83H2A-13	EXHIBIT HALL GROUP B +51 NE	
9	83H2A-9	EXHIBIT HALL (LARGE STAGE) GROUP A +51 NE		21	35H2A-15	EXHIBIT HALL (EMERG) GROUP C +51 NE	
10	83H2A-11	EXHIBIT HALL (LARGE STAGE) GROUP B +51 NE		22	83H2A-15	EXHIBIT HALL GROUP A +51 NE	
11	83H2A-13	EXHIBIT HALL (STAGE EMERG) GROUP C +51 NE		23	83H2A-17	EXHIBIT HALL GROUP B +51 NE	
12	83H2A-8	EXHIBIT HALL (LARGE STAGE) GROUP D +51 NE		24	83H2A-17	EXHIBIT HALL GROUP F +51 NE	
Rly	Circuit	Description	LV Switch	Rly	Circuit	Description	LV Switch
25	83H2A-16	EXHIBIT HALL GROUP G +51 NE		37	83H2A-17	EXHIBIT HALL (EMERG) GROUP C +51 NE	
26	83H2A-18	EXHIBIT HALL GROUP H +51 NE		38	83H2A-29	EXHIBIT HALL GROUP D +51 NE	
27	83H2A-20	EXHIBIT HALL GROUP A +51 NE		39	83H2A-29	EXHIBIT HALL GROUP E +51 NE	
28	83H2A-19	EXHIBIT HALL GROUP B +51 NE		40	83H2A-30	EXHIBIT HALL GROUP F +51 NE	
29	83H2A-15	EXHIBIT HALL (EMERG) GROUP C +51 NE		41	83H2A-1	EXHIBIT HALL GROUP G +51 NE	
30	83H2A-21	EXHIBIT HALL GROUP D +51 NE		42	83H2A-31	EXHIBIT HALL GROUP H +51 NE	
31	83H2A-23	EXHIBIT HALL GROUP E +51 NE		43	83H2A-17	EXHIBIT HALL (EMERG) GROUP C +51 NE	
32	83H2A-22	EXHIBIT HALL GROUP F +51 NE		44	83H2A-15	EXHIBIT HALL GROUP A +51 NE	
33	83H2A-24	EXHIBIT HALL GROUP G +51 NE		45	83H2A-33	EXHIBIT HALL EXT DOOR +51 NE	
34	83H2A-26	EXHIBIT HALL GROUP H +51 NE		46	83H2A-35	EXHIBIT HALL EXT DOOR +51 NE	
35	83H2A-25	EXHIBIT HALL GROUP A +51 NE		47	83H2A-3	EXHIBIT HALL EXT DOOR +51 NE	
36	83H2A-27	EXHIBIT HALL GROUP B +51 NE		48	83H2A-5	RESTROOM LIGHTING +51 NE	
Input	Type	Description		Input	Type	Description	
A				B			
1				4			
2				5			
3				6			
7				10			
8				11			
9				12			

